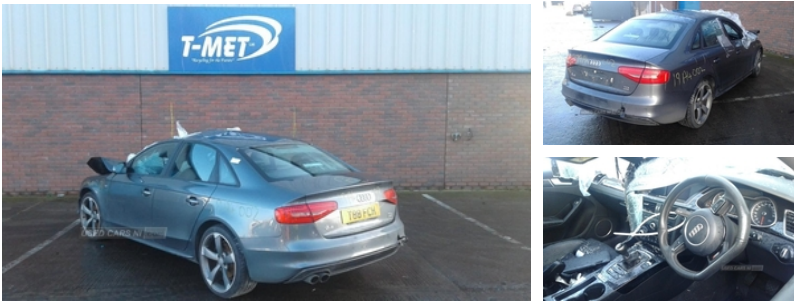




84 Armagh Road,, Dungannon, BT71 7JA  
Option 3: 02837549092

## Audi A4 S LINE BLACK EDIT TDI | Mar 2012



Engine and gearbox are both in good working condition as are the rest of the parts that are still available. For any queries on a part for this car or any other particular car give T-met a call on 028 37 549092 option 3. Breaking a wide range of cars with hundreds in stock

### Vehicle Features

Alarm, Alloy wheels, Anti-lock Braking System, Audio remote control, Bluetooth connection, Body coloured bumpers, Climate control, Cruise control, Digital radio, Drivers airbag, Electric door mirrors, ESP, Folding rear seats, Front armrest, Front electric windows, Front fog lights, Front parking sensor, Headlight washers, Heated door mirrors, Immobiliser, Isofix child seat anchor points, Lumbar support, Media storage, Partial leather seat trim, Passenger airbag, Radio/CD, Rear armrest, Rear electric windows, Rear parking sensor, Remote central locking, Reverse parking aid, Side airbags, Space saver spare wheel, Spare wheel, Sports seats, Steering wheel mounted controls, Traction control, Trip computer, USB/iPod interface, Xenon headlights

<b>Fuel Type:</b>	Diesel
<b>Transmission:</b>	Manual
<b>Colour:</b>	Grey
<b>Engine Size:</b>	1968
<b>CO2 Emission:</b>	145
<b>Tax Band:</b>	F (£210 p/a)
<b>Body Style:</b>	Saloon
<b>Insurance group:</b>	27E
<b>Reg:</b>	JFZ4687

### Technical Specs

DIMENSIONS	
<b>Length:</b>	4703mm
<b>Width:</b>	1826mm
<b>Height:</b>	1427mm
<b>Seats:</b>	5
<b>Luggage Capacity (Seats Up):</b>	480L
<b>Gross Weight:</b>	2110KG
<b>Max. Loading Weight:</b>	550KG
PERFORMANCE & ECONOMY	
<b>Fuel Consum. (Urban Cold):</b>	40.9MPG
<b>Fuel Consum. (Extra Urban):</b>	60.1MPG
<b>Fuel Consum. (Combined):</b>	51.4MPG
<b>Fuel Tank Capacity:</b>	64L
<b>Number Of Gears:</b>	6 SPEED
<b>Top Speed:</b>	140MPH
<b>Acceleration 0-100 km/h:</b>	8.3s
<b>Engine Power BHP:</b>	168BHP

