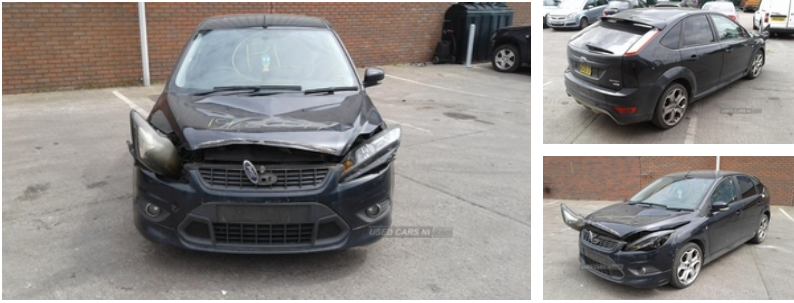




84 Armagh Road Dungannon, , BT71 7JA
Option 3: 02837549092

Ford Focus 1.8 TDCi Zetec S 5dr | Aug 2009



Engine and gearbox are both in good working condition as are the rest of the parts that are still available. Breaking a wide range of cars with hundreds in stock For any queries on a part for this car or any other particular car give T-met a call on ARMAGH 028 37 549092 option 3

MALLUSK 028 90 838176

CAMPSIE 028 71 812727

Vehicle Features

4 speed fan with direction control + 2 side window demist vents, 4 spoke leather steering wheel with silver accents, 6 speakers, 60/40 split back and cushion rear seats with 2 height adjustable headrests, ABS+Electronic Brake force Distribution, Advanced restraint system (ARS), Air conditioning, Air recirculation control, Alarm, Alloy wheels, Aluminium finish hand brake cover, Aluminium finish interior door handles, Aluminium pedals, Anti-burst high-security shielded door locks, Anti-lock Braking System, Anti submarining/fully reclining front seats, Audio remote control, Black bodyside mouldings, Black mesh radiator grille with chrome surround, Body colour bumpers, Body colour door handles, Body coloured bumpers, Body colour electric adjustable heated door mirrors, Body colour ST large rear spoiler, Central locking fuel flap, Centre console storage box/armrest, Centre console with front cupholders/pen holder/heating ducts to rear, Cloth seat trim, Courtesy light in luggage compartment, Curtain airbags, Digital clock, Door ajar warning, Driver's seat with adjustable lumbar support, Driver/passenger front seatback pockets, Driver/passenger sunvisors with vanity mirrors + covers, Driver airbag, Drivers airbag, Electric boot release, Electric door mirrors, Electric hydraulic PAS, ESP, ESP with traction control + emergency brake assist, Exterior temperature gauge, Folding rear seats, Front and rear folding grab handles (coat hooks on rear), Front armrest, Front electric windows, Front fog lights, Front inertia reel height

Fuel Type:	Diesel
Transmission:	Manual
Colour:	Black
Engine Size:	1753
CO2 Emission:	137
Tax Band:	E (£190 p/a)
Body Style:	Hatchback
Insurance group:	16E
Reg:	EN09DYP

Technical Specs

DIMENSIONS	
Length:	4337mm
Width:	1839mm
Height:	1500mm
Seats:	5
Luggage Capacity (Seats Up):	396L
Gross Weight:	1950KG
Max. Loading Weight:	559KG
PERFORMANCE & ECONOMY	
Fuel Consum. (Urban Cold):	42.1MPG
Fuel Consum. (Extra Urban):	65.6MPG
Fuel Consum. (Combined):	54.2MPG
Fuel Tank Capacity:	53L
Number Of Gears:	5 SPEED
Top Speed:	118MPH
Acceleration 0-100 km/h:	10.8s
Engine Power BHP:	113BHP



adjustable seatbelts with pre-tensioners, Front overhead courtesy lights with theatre style dimming and delay, Front passenger airbag, Front side airbags, Front variable intermittent wipers with electric wash, Gear lever knob with satin aluminium insert, Handbrake release button with aluminium finish, Heated door mirrors, Heated rear window, Height adjustable front headrests, Illuminated heater controls, Immobiliser, Immobiliser-Passive Anti-Theft System (PATS), Key operated locking bonnet, Lights on warning, Locking wheel nuts, Low screen washer fluid warning, Lumbar support, Mini steel spare wheel, OEM sound system, Passenger airbag, Pollen/active carbon filters, Quickclear heated windscreen, Radio/CD, Reach + rake adjustable steering column, Rear bumper scratch pad moulding, Rear child proof door locks, Rear intermittent wiper with electric wash and auto reverse function, Rear wiper, Remote central double locking, Remote central locking, Rubber centre console stowage mat, Satin aluminium finish to instrument cluster rings, Side airbags, Side curtain airbags, Space saver spare wheel, Sports seats, Sports style front seats, Sports suspension, Sport suspension, Steering column with mounted audio controls, Steering wheel mounted controls, Third fixed centre rear headrest, Three rear inertia reel lap/diagonal seatbelts, Tic toc cloth trim, Tie down hooks in luggage area, Traction control, Trip computer, Windscreen heating