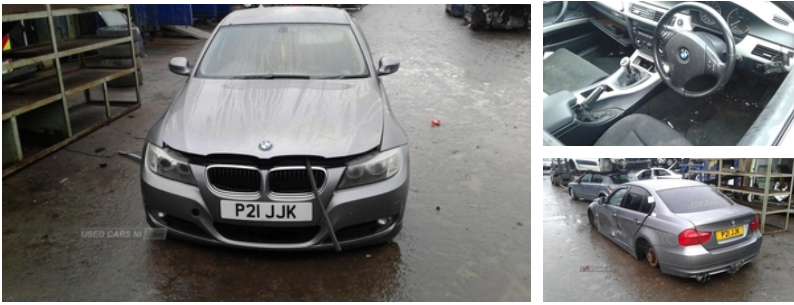




84 Armagh Road Dungannon, , BT71 7JA
Option 3: 02837549092

BMW 3 Series 318d ES 4dr | May 2009



Engine and gearbox are both in good working condition as are the rest of the parts that are still available. Breaking a wide range of cars with hundreds in stock For any queries on a part for this car or any other particular car give T-met a call on ARMAGH 028 37 549092 option 3

Vehicle Features

'Guide me home' headlamps, 2 outer rear height adjustable/removeable headrests + foldable/removeable centre rear headrest, 2 speed adjustable intermittent wipers with wash/wipe function, 2 x folding cupholders in instrument panel above glovebox, 3 point inertia reel seatbelts + pre-tensioners on outer rear seats, 4 foldable grab handles - rear with clothes hook, 4 lashing points to secure luggage, ABS, Anti-lock Braking System, Anti whiplash head restraints, Aspheric door mirrors, Automatic drive away locking facility, Automatic headlight beam throw control, Automatic interior light soft on/soft off system, Black roof mouldings, BMW professional radio, Body colour bumpers, Body colour electric adjustable door mirrors, Brake force display, Brake pad wear indicator warning light, CBC - (Cornering brake control), CD player with MP3 decoder, Central locking fuel filler cap, Centre lock switch, Check control system, Chrome plated door sill finishers with BMW designation, Clear indicator lenses, Diesel particulate filter, Digital clock, Door/boot open warning light, Driver and passenger airbags, Driver and passenger sunvisors with vanity mirrors + slide cover, DSC - Dynamic Stability Control, Dynamic brake control, Dynamic brake lights, Dynamic Traction Control - DTC, Electric front and rear windows with one touch/convenient open/close function, Electronic brake force distribution, Electronic immobiliser, Exterior parts in body colour, Front/rear interior lights, Front and rear door armrests, Front and rear head airbags, Front and rear velour floor mats, Front door pockets, Front fog lights/heated windscreen washer jets/heated door mirrors, Front ornamental

Fuel Type:	Diesel
Transmission:	Manual
Colour:	Grey
Engine Size:	1995
CO2 Emission:	123
Tax Band:	D (£160 p/a)
Body Style:	Saloon
Insurance group:	22E
Reg:	P21JJK

Technical Specs

DIMENSIONS	
Length:	4531mm
Width:	1817mm
Height:	1421mm
Seats:	5
Luggage Capacity (Seats Up):	460L
Gross Weight:	1950KG
Max. Loading Weight:	520KG
PERFORMANCE & ECONOMY	
Fuel Consum. (Urban Cold):	49.6MPG
Fuel Consum. (Extra Urban):	68.9MPG
Fuel Consum. (Combined):	60.1MPG
Fuel Tank Capacity:	61L
Number Of Gears:	6 SPEED
Top Speed:	130MPH
Acceleration 0-100 km/h:	9.3s
Engine Power BHP:	140.8BHP



grille with black kidney bars and chrome bezel, Front passenger isofix child seat attachment, Front passenger seat occupancy sensor, Front seatbelt pretensioners + load limiters, Front seat side impact airbags, Glasses holder in storage compartment, Glovebox light, Green tinted heat insulating glass, Heated rear window with automatic switch off, Height adjustable front headrests, Indirect front interior illumination - soft-light function, Isofix system on outer rear seats, Leather gear knob, Leather handbrake grip, Lights on warning, Lockable glovebox, Luggage compartment lighting, Multi-function controls for steering wheel, On board computer, Operation warning of all exterior lights, Outside temperature display, PAS, Push button starter, Reach + rake adjustable steering column, Rear child proof door locks, Rear storage compartment in multifunction centre console with sliding cover, Rear window diversity am/fm aerial, Remote central locking, Remote control alarm, Run-flat tyres, Run flat tyre indicator, Service interval indicator, Three 3 point rear seatbelts, Toolkit located in luggage compartment, Twin horns, Warning triangle and first aid kit