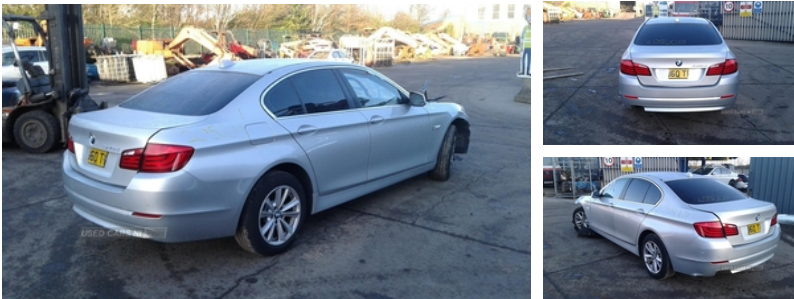




84 Armagh Road,, Dungannon, BT71 7JA  
Option 3: 02837549092

## BMW 5 Series 520d SE 4dr Step Auto | Sep 2010



Engine and gearbox are both in good working condition as are the rest of the parts that are still available. Breaking a wide range of cars with hundreds in stock. For any queries on a part for this car or any other particular car give T-met a call on

\* ARMAGH 028 37 549092 option 3

### Vehicle Features

12V power point front, 12V socket in rear centre console, ABS/EBD, Advanced Head Protection System front + rear, Aluminium brake calipers, Anthracite Velour floor mats, Anti-lock Braking System/EBD, Auto dimming rear view mirror, Automatic Stability Control (ASC), Auxiliary point for auxiliary devices, BMW professional radio/CD/MP3, Body colour door handles, Body coloured bumpers, Body coloured door mirrors, Body coloured side sills, CBC - (Cornering brake control), Check control system, Chrome kidney grille with black vertical slats, Crash Sensor - activates hazard/interior lighting + unlocks doors, Diesel particulate filter, Driver/front passenger side airbags, Driver/Passenger airbags (Impact dependent), DSC+, Dynamic brake control, Dynamic Traction Control - DTC, Electric + heated aspheric door mirrors, Electric front and rear windows with fingertip open/close + anti-trap all round, Electromechanical parking brake, Engine immobiliser, Fogging sensor for front windscreen, Front/rear courtesy lights with soft on/off dimming, Front/rear Parking distance control, Front/rear reading lights, Front centre armrest, Front cupholder, Front fog lights, Front footwell lights, Front head restraints with anti-whiplash, Front passenger airbag deactivation, Front passenger seat occupancy sensor, Fuel cut off safety device, Green tinted heat insulating glass, Headlight range control-electric, Heated windscreen washer jets, Hill start assist, iDrive Controller and Display with 7" monitor, Illuminated glovebox with lock, Inertia reel front seatbelts+pretensioners, Isofix rear child seat preparation,

<b>Fuel Type:</b>	Diesel
<b>Transmission:</b>	Semi-Automatic
<b>Colour:</b>	Silver
<b>Engine Size:</b>	1995
<b>CO2 Emission:</b>	137
<b>Tax Band:</b>	E (£190 p/a)
<b>Body Style:</b>	Saloon
<b>Insurance group:</b>	32E
<b>Reg:</b>	YD60TWX

### Technical Specs

DIMENSIONS	
<b>Length:</b>	4899mm
<b>Width:</b>	1860mm
<b>Height:</b>	1464mm
<b>Seats:</b>	5
<b>Luggage Capacity (Seats Up):</b>	520L
<b>Gross Weight:</b>	2235KG
<b>Max. Loading Weight:</b>	610KG
PERFORMANCE & ECONOMY	
<b>Fuel Consum. (Urban Cold):</b>	44.1MPG
<b>Fuel Consum. (Extra Urban):</b>	62.8MPG
<b>Fuel Consum. (Combined):</b>	54.3MPG
<b>Fuel Tank Capacity:</b>	70L
<b>Number Of Gears:</b>	8 SPEED
<b>Top Speed:</b>	140MPH
<b>Acceleration 0-100 km/h:</b>	8.1s
<b>Engine Power BHP:</b>	181BHP

Keyless ignition, Locking wheel bolts, Luggage compartment release button in drivers A pillar, Luggage compartment with electric unlocking via key remote control, Multi-function controls for steering wheel, On board computer, Outside temperature display, Personal Profile, Rain sensor with auto light activation system, Reach + rake adjustable steering column, Rear centre armrest with 2 cupholders + storage, Rear door child safety locks, Rear headrests, Remote central locking, Remote control Thatcham category 1 alarm, Run flat tyres, Securing rings in luggage compartment, Service interval indicator, Shark fin roof aerial, Speed limiter, Sunvisors with illuminated vanity mirrors, Three inertia reel rear seatbelts, Twin chrome exhaust tailpipes, Tyre puncture warning system, Warning triangle and first aid kit