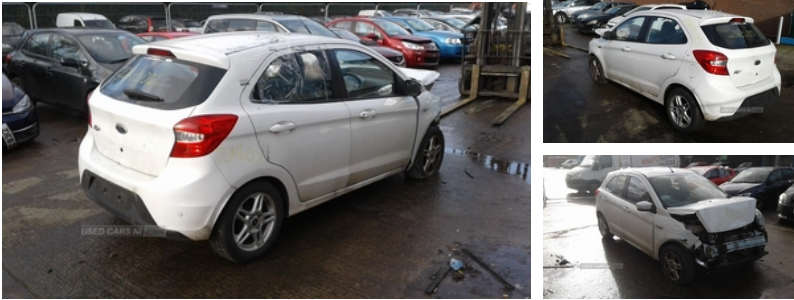




84 Armagh Road,, Dungannon, BT71 7JA
Option 3: 02837549092

Ford Ka 1.2 Zetec 5dr | Feb 2018



Engine and gearbox are both in good working condition as are the rest of the parts that are still available. Breaking a wide range of cars with hundreds in stock For any queries on a part for this car or any other particular car give T-met a call on ARMAGH 028 37 549092 option 3

Vehicle Features

3 rear head restraints, 4 speakers, 4.2-Inch Colour TFT Screen, 15" 5x2 spoke alloy wheels, 60/40 split folding rear seat, ABS, Anti-lock Braking System, Aux input, Bluetooth system, Body colour door handles, Body coloured bumpers, Body coloured door mirrors, Cruise control, Curtain airbags, DAB radio/CD player, Daytime running lights, Deflation detection system, Device dock, Driver and passenger airbags, Electrically adjustable door mirrors, Electric front windows, Engine immobiliser, ESP, Front fog lamps, Front grille with chrome upper, Front head restraints, Front side airbags(head+thorax), Height adjustable driver's seat, Hill start assist, Isofix, Leather wrapped steering wheel, Lodha cloth upholstery, MP3 player, MyKey system, PAS, Passenger airbag + deactivate switch, Perimeter alarm, Power Assisted Steering, Rake adjustable steering column, Rear wiper, Remote audio controls on steering wheel, Remote central locking, Speed limiter, SYNC Emergency Assistance, Trip computer, USB socket, Voice control system

Fuel Type:	Petrol
Transmission:	Manual
Colour:	White
Engine Size:	1198
CO2 Emission:	114
Tax Band:	Petrol/Diesel (£190 p/a)
Body Style:	Hatchback
Insurance group:	2E
Reg:	WUI7229

Technical Specs

DIMENSIONS	
Length:	3929mm
Width:	1695mm
Height:	1521mm
Seats:	5
Luggage Capacity (Seats Up):	270L
Gross Weight:	1500KG
Max. Loading Weight:	487KG
PERFORMANCE & ECONOMY	
Fuel Consum. (Urban Cold):	42.8MPG
Fuel Consum. (Extra Urban):	70.6MPG
Fuel Consum. (Combined):	56.5MPG
Fuel Tank Capacity:	42L
Number Of Gears:	5 SPEED
Top Speed:	99MPH
Acceleration 0-100 km/h:	15.3s
Engine Power BHP:	68.4BHP



