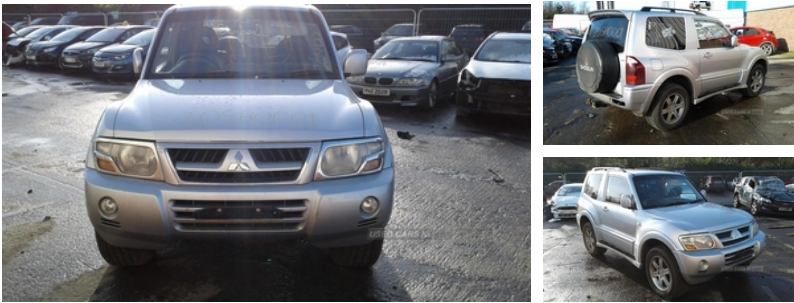




84 Armagh Road,, Dungannon, BT71 7JA  
Option 3: 02837549092

## Mitsubishi Shogun 3.2 Di-D Warrior 3dr Auto | Mar 2004



Engine and gearbox are both in good working condition as are the rest of the parts that are still available. Breaking a wide range of cars with hundreds in stock. For any queries on a part for this car or any other particular car give T-met a call on \* ARMAGH 028 37 549092 option 3

### Vehicle Features

2nd row centre armrest with built-in cupholders, 2nd row personal lamps, 3 point ELR/ALR belts x3 on 2nd row, 4 spoke leather steering wheel, 6 speakers, 18" alloys, 60/40 split/folding tip-up 2nd row seats, ABS+Electronic Brake force Distribution, Aerial in nearside rear quarter window, Alloy spare wheel, Anti-lock Braking System+Electronic Brake force Distribution, Anti-odour air filter, Cabin air filter, Cargo room underfloor compartment, Central door locking and tailgate, Centre multi info display, Chrome headlight surround, Climate control, Coathangers (2), Collapsible steering column, Colour keyed bumpers, Colour keyed door handles, Colour keyed door mirrors, Colour keyed front grille, Colour keyed roof spoiler, Colour keyed wheelarches+side sill+lower door, Cruise control, Cupholders (all seats), Door courtesy lamps, Driver's footrest, Driver's seat dual height adjust, Driver's seat electric height adjustment, Driver and passenger illuminated vanity mirror, Dual SRS airbags, Electric adjustable/heated/folding door mirrors, Electric front windows - anti trap + one touch, Engine immobiliser, Extendable sunvisors, Flock finish for sunvisors, Floor console box with slide-adjust centre armrest, Floor mats, Front/rear mudflaps, Front and rear towing rings, Front door pockets, Front fog lamps, Front interior light, Front map reading lights, Front passengers seat 'walk-in' system, Front seatback pockets, Front seatbelt pretensioner, Front side airbags, Front skid plate, Full size spare tyre, Fully flat folding front/2nd row seats, Halogen headlights

<b>Fuel Type:</b>	Diesel
<b>Transmission:</b>	Automatic
<b>Colour:</b>	Silver
<b>Engine Size:</b>	3200
<b>CO2 Emission:</b>	278
<b>Tax Band:</b>	K (£415 p/a)
<b>Body Style:</b>	Sport utility vehicle
<b>Insurance group:</b>	32A
<b>Reg:</b>	KNZ5475

### Technical Specs

<b>DIMENSIONS</b>	
<b>Length:</b>	4315mm
<b>Width:</b>	1565mm
<b>Height:</b>	Not Availablemm
<b>Seats:</b>	5
<b>Luggage Capacity (Seats Up):</b>	414L
<b>Gross Weight:</b>	2510KG
<b>Max. Loading Weight:</b>	520KG
<b>PERFORMANCE &amp; ECONOMY</b>	
<b>Fuel Consum. (Urban Cold):</b>	21.2MPG
<b>Fuel Consum. (Extra Urban):</b>	32.1MPG
<b>Fuel Consum. (Combined):</b>	26.9MPG
<b>Fuel Tank Capacity:</b>	71L
<b>Number Of Gears:</b>	5 SPEED
<b>Top Speed:</b>	106MPH
<b>Acceleration 0-100 km/h:</b>	13.2s
<b>Engine Power BHP:</b>	158.2BHP



with clear outer lenses, Headlamp levelling, Heated front seats, Height adj front seatbelts/belt force limiters, Height adjustable 1st and 2nd row headrests, High mounted stop lamp, Illuminated ignition with time delay, Illuminated side steps, Instrument panel light dimmer, Interior tailgate handle, Intermittent rear wash/wipe, Isofix rear child seat preparation in 2nd row, Key left in ignition audible warning, Keyless entry and alarm, Leather upholstery, Lights on warning, Lockable/illuminated lower glovebox, Locking wheel nuts, Luggage area lamp, Luggage cover, Luggage tie-down hooks, Lumbar support, Odometer/tripmeter with digital display, PAS, Power Assisted Steering, Rear accessory power socket, Rear fog lamp, Rear quarter windows 'butterfly' type, Rear window demister with timer, Reclining rear seats, Remote fuel flap release, Retractable assist grips (3), Side impact door beams, Soft spare wheel cover, STC - Stability and traction control, Stereo radio/CD player, Stowage pocket in tailgate trim, Tachometer, Tailgate mounted spare wheel, Tilt adjustable steering wheel, Tinted windows, Titanium effect dash, Upper door panel trim - Leather, Upper glovebox, Variable intermittent front wash/wipe, Ventilated front and rear disc brakes, Visible vehicle identification number, Windscreen shadeband