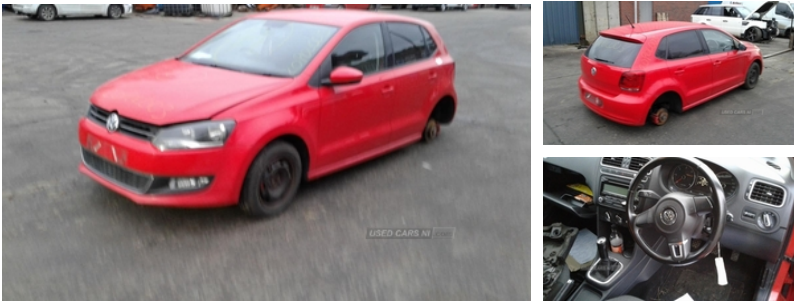




84 Armagh Road,, Dungannon, BT71 7JA
Option 3: 02837549092

Volkswagen Polo 1.6 TDI 90 SEL 5dr | Jan 2010



Engine and gearbox are both in good working condition as are the rest of the parts that are still available. Breaking a wide range of cars with hundreds in stock For any queries on a part for this car or any other particular car give T-met a call on ARMAGH 028 37 549092 option 3

Vehicle Features

'Lights On' warning buzzer, 2 bag hooks in luggage compartment, 2 cupholders, 3x3 point rear seatbelts, 4 grab handles, 12V power point in luggage area, 12V socket with cover, 60/40 split folding rear seat, ABS, Alarm with interior protection, Anti-lock Braking System, Body colour door handles, Body coloured bumpers, Body coloured door mirrors, Body coloured side sills, Carpet mats, Centre console storage, Chrome air intake, Chrome interior door handles, Chrome trimmed radiator grille louvre inserts, Daytime running lights, Delay courtesy light function, Diesel particulate filter, Driver/passenger sunvisors and illuminated vanity mirrors, Driver and front passenger under seat drawer, Driver and passenger airbags, Driver seat height adjust, Dust/pollen filter, Electric front windows, Electric operated/heated door mirrors, Electronic engine immobiliser, ESP with EDL + ASR, Front centre armrest with storage compartment, Front door pockets, Front fog lights, Front footwell illumination, Front head restraints, Front passenger seat height adjust, Front seat backrest storage nets, Front side airbags, Front wash/wipe with interval delay, Glovebox, HBA (Hydraulic Brake Assist), Heated rear window with auto timer, Heat insulating tinted glass, High gloss black finish B pillar, Instrument panel - Illumination control, Isofix Preparation 2 Rear child seats, Leather steering wheel/gearknob/handbrake grip, Load lip protective shield, Luggage compartment cover, Luggage compartment lighting, Matt chrome trim, MDI with USB/iPod connection cables,

Fuel Type:	Diesel
Transmission:	Manual
Colour:	Red
Engine Size:	1595
CO2 Emission:	112
Tax Band:	C (£35 p/a)
Body Style:	Hatchback
Insurance group:	13E
Reg:	CA59NCV

Technical Specs

DIMENSIONS	
Length:	3970mm
Width:	1682mm
Height:	1485mm
Seats:	5
Luggage Capacity (Seats Up):	280L
Gross Weight:	1650KG
Max. Loading Weight:	543KG
PERFORMANCE & ECONOMY	
Fuel Consum. (Urban Cold):	54.3MPG
Fuel Consum. (Extra Urban):	76.3MPG
Fuel Consum. (Combined):	65.7MPG
Fuel Tank Capacity:	45L
Number Of Gears:	5 SPEED
Top Speed:	112MPH
Acceleration 0-100 km/h:	11.5s
Engine Power BHP:	88.5BHP

Multifunction computer - Midline, Note pad holder, Note pad holder, PAS - speed related, pen holder and coin holder in glove box, pen holder and coin holder in glove box, Power Assisted Steering - speed related, Reach adjustable steering column, Reading lights, Rear door pockets, Rear electric windows, Rear head restraints, Rear windscreen washer and wiper with interval delay, Remote central locking with 2 remote folding keys, Service interval indicator, Steel space saver spare wheel, Steering column rake adjustment, Three spoke steering wheel, Two tone horn, Tyre pressure monitoring system, Variable boot floor, Warning buzzer and light for front seatbelts unfastened