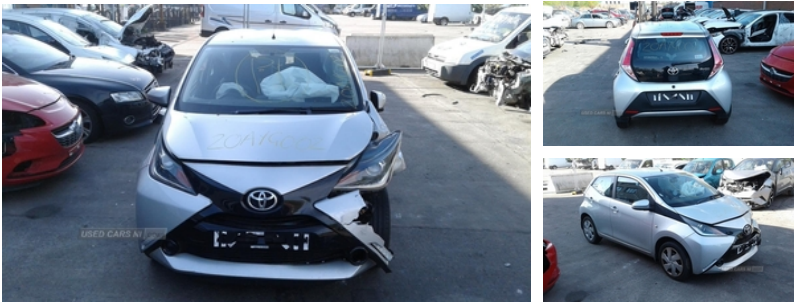


Toyota Aygo 1.0 VVT-i X-Play 5dr | Jan 2015



Engine and gearbox are both in good working condition as are the rest of the parts that are still available. Breaking a wide range of cars with hundreds in stock For any queries on a part for this car or any other particular car give T-met a call on ARMAGH 028 37 549092 option 3

Vehicle Features

4 speakers, 12V Accessory socket, ABS, Air conditioning, Air recirculation system, Auxiliary input socket, Bluetooth system, Body colour bumpers, Body colour door handles, Body colour door mirrors, Centre console storage, Digital clock, Driver's seat height adjuster, Driver and passenger airbags, Driver and passenger sunvisors, Electric adjustable door mirrors, Electric front windows, Engine immobiliser, ESP, Front map reading lights, Front side airbags, Fuel indicator with low level warning, Glovebox, Green tinted glass, Headlamp levelling, Heated door mirrors, Heated rear windscreen, Hill start assist, Isofix system on outer rear seats, LED daytime running lights, Lights on warning, Passenger airbag deactivate switch, Pollen filter, Rear 12v plug, Rear child proof door locks, Rear cupholders, Rear headrests, Rear spoiler, Rear wiper, Remote central locking, Removable rear parcel shelf, Speed limiter, Speed sensitive power steering, Storage bins on all doors, Tachometer, Tonneau cover, Tyre pressure warning, Tyre repair kit, USB connection, Vehicle Stability Control (VSC)

| | |
|-------------------------|------------|
| Fuel Type: | Petrol |
| Transmission: | Manual |
| Colour: | Silver |
| Engine Size: | 998 |
| CO2 Emission: | 95 |
| Tax Band: | A (£0 p/a) |
| Body Style: | Hatchback |
| Insurance group: | 7E |
| Reg: | IRZ7807 |

Technical Specs

| DIMENSIONS | |
|-------------------------------------|---------|
| Length: | 3455mm |
| Width: | 1615mm |
| Height: | 1460mm |
| Seats: | 4 |
| Luggage Capacity (Seats Up): | 168L |
| Gross Weight: | 1240KG |
| Max. Loading Weight: | 400KG |
| PERFORMANCE & ECONOMY | |
| Fuel Consum. (Urban Cold): | 56.5MPG |
| Fuel Consum. (Extra Urban): | 78.5MPG |
| Fuel Consum. (Combined): | 68.9MPG |
| Fuel Tank Capacity: | 35L |
| Number Of Gears: | 5 SPEED |
| Top Speed: | 99MPH |
| Acceleration 0-100 km/h: | 14.2s |
| Engine Power BHP: | 68.4BHP |