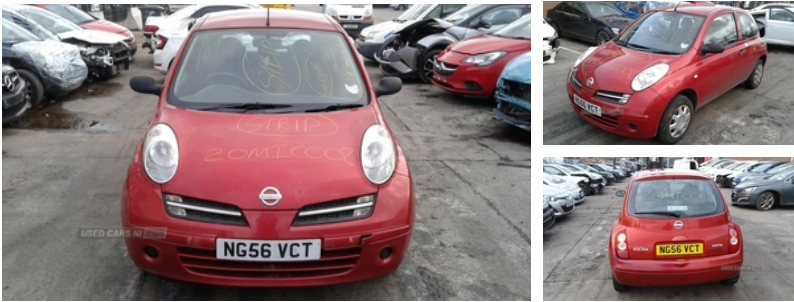




84 Armagh Road,, Dungannon, BT71 7JA
Option 3: 02837549092

Nissan Micra 1.2 Initia 3dr | Dec 2006



Engine and gearbox are both in good working condition as are the rest of the parts that are still available. Breaking a wide range of cars with hundreds in stock For any queries on a part for this car or any other particular car give T-met a call on ARMAGH 028 37 549092 option 3

Vehicle Features

3 point ELR seatbelts front and rear, 12V power point front, 60/40 split rear seats, ABS with Brake Assist, Active front headrests, Body colour bumpers, Centre console storage, Digital clock, Driver and passenger airbags, Electric front windows, Electronic brake force distribution, Engine immobiliser, Front door pockets, Front map reading lights, Front passenger grab handle, Front seatbelt pretensioners + load limiters, Full size spare wheel, Headlamp levelling, Height adjustable front headrests, Interior switch for central locking, Isofix child seat attachment, Low fuel warning light, Passenger airbag deactivation system, Radio/CD, Rear cupholders, Rear wiper, Service interval indicator, Sliding rear seats, Tachometer, Three height adjustable rear head restraints, Tilt adjustable steering wheel

Fuel Type:	Petrol
Transmission:	Manual
Colour:	Red
Engine Size:	1240
CO2 Emission:	139
Tax Band:	E (£190 p/a)
Body Style:	Hatchback
Insurance group:	09E
Reg:	NG56VCT

Technical Specs

DIMENSIONS	
Length:	3719mm
Width:	1660mm
Height:	1540mm
Seats:	5
Luggage Capacity (Seats Up):	584L
Gross Weight:	1475KG
Max. Loading Weight:	518KG

PERFORMANCE & ECONOMY	
Fuel Consum. (Urban Cold):	38.2MPG
Fuel Consum. (Extra Urban):	55.4MPG
Fuel Consum. (Combined):	47.9MPG
Fuel Tank Capacity:	46L
Number Of Gears:	5 SPEED
Top Speed:	104MPH
Acceleration 0-100 km/h:	13.5s
Engine Power BHP:	79.1BHP

