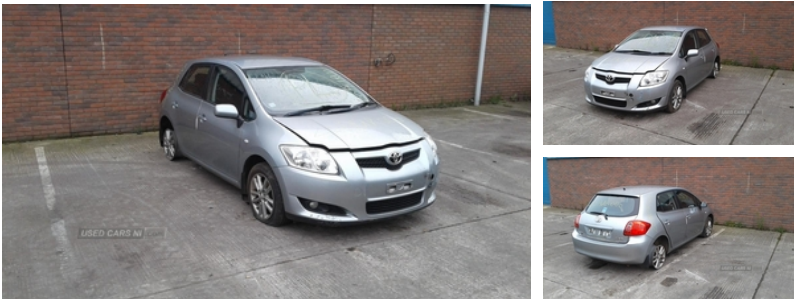




84 Armagh Road,, Dungannon, BT71 7JA
Option 3: 02837549092

Toyota Auris 1.6 VVTi TR 5dr | Jun 2008



Engine and gearbox are both in good working condition as are the rest of the parts that are still available. Breaking a wide range of cars with hundreds in stock For any queries on a part for this car or any other particular car give T-met a call on ARMAGH 028 37 549092 option 3
CAMPSIE 028 71 812727

Vehicle Features

2 speed intermittent front wiper with mist function, 3 adjustable rear headrests, 4 Load area hooks, 6 speakers, 16" 5 double spoke alloy wheels, 60/40 split fold rear seat back, ABS, Air recirculation system, anti-trap + key-off function, Anti submarining seats, Ashtray and cigar lighter, Body colour bumpers, Body colour door handles, Body colour door mirrors, brake assist and EBD, Central double locking with remote activation, Centre console box with lid, Climate control air conditioning, Cloth upholstery, Digital clock, Door ajar warning, Driver's footrest, Driver's seat manual height adjust, Driver/Front Passenger airbags, Driver/passenger front seatback pockets, Driver and passenger sunvisors, Drivers knee airbag, Dual glovebox, Electrically adjustable wide angle door mirrors, Electrically heated door mirrors, Electric front windows, Electric rear windows, Electronic headlamp levelling, Front adjustable head restraints, Front and rear cupholders, Front and rear curtain airbags, Front and rear seatbelts with electronic sensing, Front armrest, Front door pockets, Front fog lamps, Front lateral airbags, Heated rear window with timer, Height adjustable front, Illuminated Driver/Pass vanity mirrors with cover, Instrument display dimmer, Isofix child seat preparation, Keys left in ignition warning, Leather gear knob, Leather trimmed x-spoke steering wheel, Lights on warning, Locking wheel nuts, Luggage compartment lighting, Multi-information display with trip computer, one-touch, Outside temperature display, Passenger

Fuel Type:	Petrol
Transmission:	Manual
Colour:	Silver
Engine Size:	1598
CO2 Emission:	166
Tax Band:	H (£305 p/a)
Body Style:	Hatchback
Insurance group:	13E
Reg:	WEZ5833

Technical Specs

DIMENSIONS	
Length:	4220mm
Width:	1760mm
Height:	1515mm
Seats:	5
Luggage Capacity (Seats Up):	354L
Gross Weight:	1750KG
Max. Loading Weight:	490KG
PERFORMANCE & ECONOMY	
Fuel Consum. (Urban Cold):	31.4MPG
Fuel Consum. (Extra Urban):	47.9MPG
Fuel Consum. (Combined):	39.8MPG
Fuel Tank Capacity:	55L
Number Of Gears:	5 SPEED
Top Speed:	118MPH
Acceleration 0-100 km/h:	10.4s
Engine Power BHP:	122BHP



airbag cut-off device, Passenger under seat storage tray, pretensioners and force limiters, Radio/CD + MP3, rear and outer 3 point seatbelts with ALR/ELR, Rear child proof door locks, Rear door chrome trim, Rear wipe-intermittent + continued sweep, Red tone rear light cluster, Remote fuel cap release, Removable rear parcel shelf, Roof mounted aerial, Seatbelt reminder for driver and front passenger, Space saver spare wheel, Speed sensitive power steering, Steering wheel mounted audio controls, Tilt/telescopic adjust steering wheel, Transponder engine immobiliser