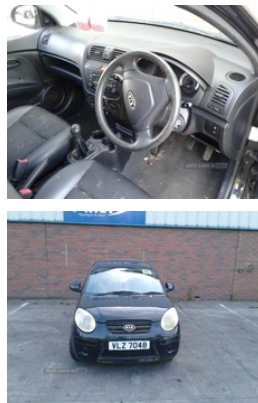


Kia Picanto 1.0 5dr | Apr 2008



Engine and gearbox are both in good working condition as are the rest of the parts that are still available. Breaking a wide range of cars with hundreds in stock For any queries on a part for this car or any other particular car give T-met a call on
ARMAGH 028 37 549092 option 3
CAMPSIE 028 71 812727
MALLUSK 02890836252

Vehicle Features

2 rear 3 point safety belts, 2 rear head restraints, 4 speakers, 4 speed front ventilation fan, 12v power outlet - front, 13" steel wheels, 60/40 split fold rear seat back, ABS/EBD, Black bodyside mouldings, Body colour bumpers, Body colour door handles, Body colour door mirrors, Cloth/vinyl upholstery, Coat hooks, Colour keyed tailgate garnish, Driver/Front Passenger airbags, Driver/passenger vanity mirrors with covers, Electric front windows, Engine immobiliser, Front console with cup holder, Front door map pockets, Front passenger grab handle, Front room lamp, Front seatbelt pretensioners, Full wheel covers, Glovebox, Heated rear window, Height adjustable front seat head restraints, Internally adjustable door mirrors, Isofix child seat attachment, Load area cover, Load area light, PAS, Passenger airbag deactivate switch, Radio/CD + MP3, Rear child proof door locks, Rear grab handles, Rear wash/wipe, Remote fuel flap release, Roof mounted aerial, Security window etching, Side impact protection, Temporary spare wheel, Tinted glass, Variable front intermittent wipers

Fuel Type:	Petrol
Transmission:	Manual
Colour:	Black
Engine Size:	999
CO2 Emission:	117
Tax Band:	C (£35 p/a)
Body Style:	Hatchback
Insurance group:	9A
Reg:	VLZ7048

Technical Specs

DIMENSIONS

Length:	3535mm
Width:	1595mm
Height:	1480mm
Seats:	4
Luggage Capacity (Seats Up):	157L

Gross Weight:	1350KG
Max. Loading Weight:	421KG

PERFORMANCE & ECONOMY

Fuel Consum. (Urban Cold):	47.9MPG
Fuel Consum. (Extra Urban):	64.2MPG
Fuel Consum. (Combined):	57.6MPG
Fuel Tank Capacity:	35L
Number Of Gears:	5 SPEED
Top Speed:	93MPH
Acceleration 0-100 km/h:	16.4s
Engine Power BHP:	60.3BHP