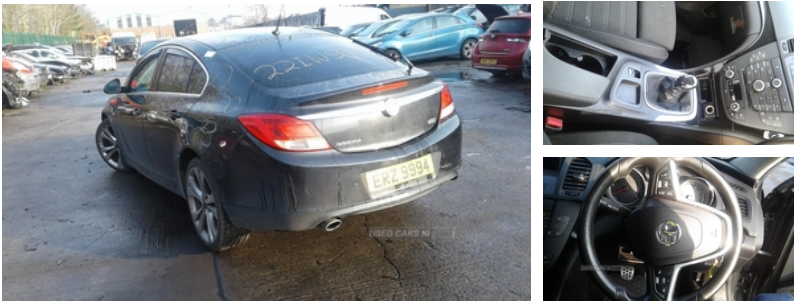




84 Armagh Road Dungannon, , BT71 7JA
Option 3: 02837549092

Vauxhall Insignia 2.0 CDTi SRi [160] 5dr | Jan 2010



ENGINE AND GEAR BOX ARE PERFECT. WE HAVE OVER A THOUSAND CARS IN STOCK WITH A GOOD RANGE OF BOTH OLD AND FRESH VEHICLES. WE OFFER FREE DELIVERY ON ALL PARTS THROUGHOUT IRELAND. PLEASE CALL* ARMAGH 028 37 549092 OPTION 3*CAMPISIE 028 71812727*MALLUSK 028 90836252

Vehicle Features

3 point rear seatbelts x3, 4 way electrically adjustable lumbar support for drivers seat, 60/40 Split fold rear seat/load through facility, ABS, Active safety front seat head restraints, Aluminium pedals, Ambient interior lighting, Automatic lighting control, Body colour bumpers, Body colour door handles, Body colour electric adjustable heated door mirrors, Centre rear head restraint, Chrome effect window side mouldings, Cruise control, Driver/Front Passenger airbags, Driver/front passenger side airbags, Electric front windows, Electric height adjustable driver seat, Electric rear windows, Electronic parking brake, Ergonomic sports front seats with extendable seat cushion, ESP, Front centre armrest with storage compartment, Front fog lights, Front map reading lights, Front seat backrest storage nets, Full size curtain airbags, Illuminated vanity mirrors, Immobiliser, Leather gearknob, Leather sports steering wheel, Lowered and uprated sports suspension, PAS, Reach + rake adjustable steering column, Rear cupholders, Rear reading lights x 2, Rear wiper, Remote central deadlocking, Remote control alarm, Service indicator, Sports instrumentation, Steering wheel mounted audio controls, Trip computer

Fuel Type:	Diesel
Transmission:	Manual
Colour:	Black
Engine Size:	1956
Body Style:	Hatchback
Insurance group:	22E
Reg:	ERZ9994

Technical Specs

DIMENSIONS	
Length:	4830mm
Width:	1856mm
Height:	1498mm
Seats:	5
Luggage Capacity (Seats Up):	530L
Gross Weight:	2145KG

PERFORMANCE & ECONOMY	
Fuel Consum. (Urban Cold):	36.7MPG
Fuel Consum. (Extra Urban):	60.1MPG
Fuel Consum. (Combined):	48.7MPG
Fuel Tank Capacity:	70L
Number Of Gears:	6 SPEED
Top Speed:	134MPH
Acceleration 0-100 km/h:	9.5s
Engine Power BHP:	158.2BHP