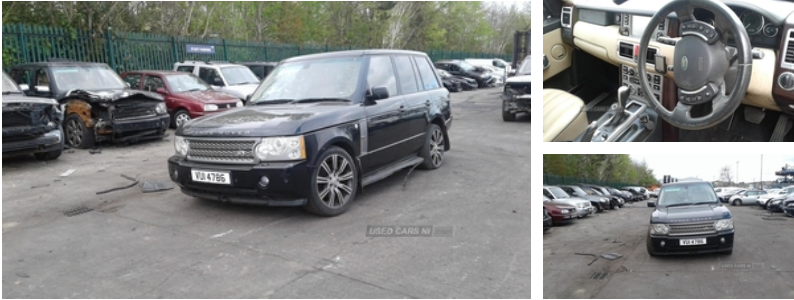




84 Armagh Road,, Dungannon, BT71 7JA
Option 3: 02837549092

Land Rover Range Rover 3.0 Td6 VOGUE 4dr Auto | Nov 2006



ENGINE AND GEAR BOX ARE PERFECT. WE HAVE OVER A THOUSAND CARS IN STOCK WITH A GOOD RANGE OF BOTH OLD AND FRESH VEHICLES. WE OFFER FREE DELIVERY ON ALL PARTS THROUGHOUT IRELAND. PLEASE CALL* ARMAGH 048 37 549092 OPTION 3*CAMPBELL 048 71 812727*BELFAST 048 90 838176
See Less

Vehicle Features

3 rear 3 point seatbelts, 4 channel ABS, 6 CD autochanger, 7" touch screen with 4x4 information, Ambient/Solar sensor with ext temp warning, Asymmetric split fold rear seat, Auto dimming interior mirror + powerfold door mirrors, Battery back up and emergency key access, Body coloured bumpers, Boot mounted additional accessory socket, Brunel power vents, Central locking, Centre console storage, Climate control/driver/pass temp controls, Cruise control, Driver's lumbar support, Driver's seat height adjustment, Driver and passenger airbags, DSC - Dynamic Stability Control, Dual blade sunvisors, EBD + Brake Assist, Electric adjustable front seats, Electric adjustable steering column, Electric front+rear windows, Electric sunroof, Electronic air suspension/variable ride height, Electronic traction control, Front and rear head airbags, Front and rear head restraints, Front centre armrest, Front cupholder, Front fog lights, Front seatbelt pretensioners with force limiters, Front side airbags, Full size spare wheel, Green tinted glass, Headlamp wash/wipe, Heated electric door mirrors, Heated seats front and rear, Heated steering wheel, High mounted stop lamp, Hill descent control, Illuminated driver/passenger vanity mirrors, Illuminated load area and glovebox, Intelligent terrain recognition software, Isofix child seat preparation, Laminated front side glass, Leather gear knob/gaiter, Leather handbrake grip, Left and Right interior flood lamps, Logic 7 Hi-fi (14 Speaker surround sound harmon

| | |
|-------------------------|-----------------------|
| Fuel Type: | Diesel |
| Transmission: | Automatic |
| Colour: | Black |
| Engine Size: | 292 |
| Body Style: | Sport utility vehicle |
| Insurance group: | 40E |
| Reg: | VUI4786 |

Technical Specs

| DIMENSIONS | |
|-------------------------------------|----------|
| Length: | 4972mm |
| Width: | 1956mm |
| Height: | 1902mm |
| Seats: | 5 |
| Luggage Capacity (Seats Up): | 535L |
| Gross Weight: | 3050KG |
| Max. Loading Weight: | 505KG |
| PERFORMANCE & ECONOMY | |
| Fuel Consum. (Urban Cold): | 19.6MPG |
| Fuel Consum. (Extra Urban): | 30.1MPG |
| Fuel Consum. (Combined): | 25MPG |
| Fuel Tank Capacity: | 104.5L |
| Number Of Gears: | 5 SPEED |
| Top Speed: | 111MPH |
| Engine Power BHP: | 174.3BHP |



kardon system), Memory function for drivers seat, Message centre, Multi function steering wheel, One-touch auto control of air distribution/demist, Park distance control, Parking heating with remote, PAS, Personal telephone integration with Bluetooth and voice recognition, Programmable interior lamp, Push button tailgate release, Rear centre armrest with 2 cupholders, Rear view camera, Rear wiper, Removable load compartment cover, Service interval indicator, Side impact protection beams, steering wheel & exterior mirrors, superlocking and lazy locking with combination ignition key and remote transmitter, Trip computer with selectable speed limit warning, Tv/navigation system with tmc, Ultrasonic alarm with passive/robust immobiliser, Venturecam, Waterfall front and rear interior illumination