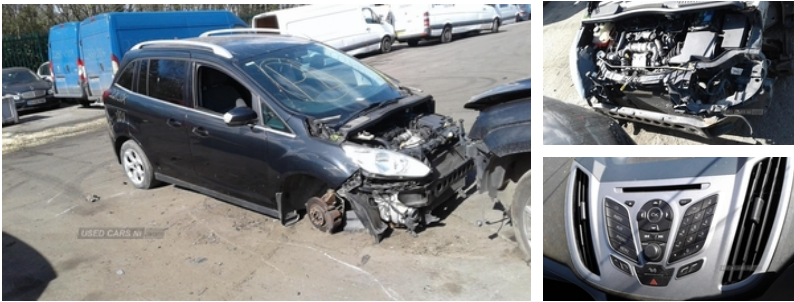




84 Armagh Road,, Dungannon, BT71 7JA
Option 3: 02837549092

Ford Grand C-MAX 1.6 TDCi Zetec 5dr | May 2011



ENGINE AND GEAR BOX ARE PERFECT. WE HAVE OVER A THOUSAND CARS IN STOCK WITH A GOOD RANGE OF BOTH OLD AND FRESH VECHILES. WE OFFER FREE DELIVERY ON ALL PARTS THROUGHOUT IRELAND. PLEASE CALL* ARMAGH 048 37 549092 OPTION 3*CAMPsie 048 71812727*MALLUSK 048 90836252

Vehicle Features

3 point seatbelts, 4 spoke leather steering wheel, 16" 5 spoke Y alloy wheels, ABS + traction control, Air conditioning, Anti-theft immobiliser, Auxiliary power socket, Bluetooth connection with voice control and USB port, Body colour bumpers with black rubbing strip, Body colour door handles, Body colour door mirrors with integral indicators, Cloth upholstery, DAB radio/CD player, Diesel particulate filter, Driver's armrest, Driver's seat manual height adjust, Driver and passenger airbags, Driver and passenger side airbags, Driver seat lumbar adjustment, Dual sliding rear doors, Easy fuel capless refuelling system, Electric front windows, Electric heated door mirrors, Electric rear windows, Electronic brake force distribution, Emergency brake assist, ESP, Fasten seatbelt reminder, Front and rear curtain airbags, Front fog lamps, Fully adjustable front headrests, Height adjustable front seatbelts, Intelligent Protection System (IPS), Intermittent rear wash/wipe, Isofix child seat attachment, Leather gearknob, Locking wheel nuts, PAS, Power child locks, Quickclear heated windscreen, Rake/reach adjustable steering wheel, Rear parking sensor, Remote audio controls on steering wheel, Remote central double locking, Thatcham 1 volume sensing alarm, Three height adjustable rear head restraints, Tonneau cover, Trip computer, Versatile split folding rear seat - 40/20/40

Fuel Type:	Diesel
Transmission:	Manual
Colour:	Black
Engine Size:	1560
Body Style:	MPV
Insurance group:	16E
Reg:	BXZ6106

Technical Specs

DIMENSIONS	
Length:	4520mm
Width:	1828mm
Height:	1684mm
Seats:	7
Luggage Capacity (Seats Up):	755L
Gross Weight:	2200KG
Max. Loading Weight:	696KG
PERFORMANCE & ECONOMY	
Fuel Consum. (Urban Cold):	48.7MPG
Fuel Consum. (Extra Urban):	64.2MPG
Fuel Consum. (Combined):	57.7MPG
Fuel Tank Capacity:	60L
Number Of Gears:	6 SPEED
Top Speed:	112MPH
Acceleration 0-100 km/h:	12.3s
Engine Power BHP:	114BHP

