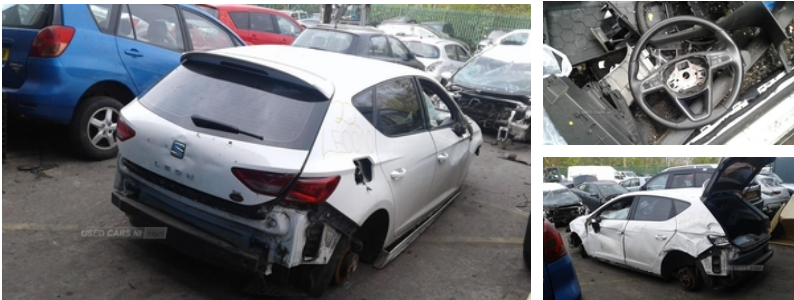




84 Armagh Road,, Dungannon, BT71 7JA
Option 3: 02837549092

Seat Leon 1.6 TDI SE 5dr [Technology Pack] | Oct 2013



Breaking a wide range of cars with hundreds in stock For any queries on a part for this car or any other particular car give T-met a call on

ARMAGH - 028 3754 9092 option 3
CAMPSIE - 028 7181 2727 option 2
BELFAST - 028 9083 6252 option 3
COLERAINE - 028 7035 1404

Vehicle Features

'Lights On' warning buzzer, 3 height adjustable rear headrests, 3 point rear seatbelts x3, 12v power point in centre console, ABS + traction control, Active front headrests, Active head restraints, Additional heating and ventilation outlet in rear of centre console, Ambient lighting, Auxiliary input socket, Bluetooth audio streaming, Bluetooth handsfree phone connection with steering wheel mounted controls, Body colour door handles, Body coloured bumpers, Body coloured door mirrors, Boot storage net, Child proof door locks, Chromed centre radiator grille surround, Chrome interior trim, Comfort suspension, Coming home headlight function, Cornering front fog lights, Cruise control, Curtain airbags, DAB Digital radio, Digital clock and outside temperature display, Driver/Front Passenger airbags, Driver/passenger sunvisors with illuminated vanity mirrors, Driver seat height/lumbar adjust, Drivers knee airbag, Drivers seatbelt reminder, Dust/pollen filter, Electrically adjustable door mirrors, Electric front/rear windows with one touch/anti pinch, Electric headlamp adjustment, Engine immobiliser, ESP+EBA, Footwell illumination, Front/rear floor mats, Front adjustable head restraints, Front armrest with storage box, Front comfort seats, Front cupholders x 2, Front map reading lights, Front seatback pockets, Front seatbelt pretensioners, Front side airbags, Heated door mirrors, Height/reach adjust steering

Fuel Type:	Diesel
Transmission:	Manual
Colour:	White
Engine Size:	1598
Body Style:	Hatchback
Insurance group:	14E
Reg:	HY63TVF

Technical Specs

DIMENSIONS	
Length:	4263mm
Width:	1816mm
Height:	1459mm
Seats:	5
Luggage Capacity (Seats Up):	380L
Gross Weight:	1820KG
Max. Loading Weight:	609KG
PERFORMANCE & ECONOMY	
Fuel Consum. (Urban Cold):	61.4MPG
Fuel Consum. (Extra Urban):	85.6MPG
Fuel Consum. (Combined):	74.3MPG
Fuel Tank Capacity:	50L
Number Of Gears:	5 SPEED
Top Speed:	119MPH
Acceleration 0-100 km/h:	10.7s
Engine Power BHP:	103.3BHP



wheel, Hill hold control, Illuminated boot, Illuminated glovebox, Leather handbrake, Leather steering wheel and gear knob, LED headlights + adaptive front lighting system + daytime running lights + LED tail lights, LED indicators in door mirrors, Locking wheel bolts, Low fuel warning light, Luggage tie-down hooks, Multi function display, Passenger airbag deactivation system, Passenger seat height adjuster, Radio/CD + MP3, Rear reading lights, Rear top tether child seat ISOFIX attachment, Rear wash/wipe, Remote central locking + deadlocks, Remote fuel flap release, SD card slot, SEAT logo boot release, Second remote key, Service interval indicator, Speed sensitive power steering, Split folding rear seat, Steering wheel mounted audio/phone controls, Storage boxes under front seats, Tinted windows, Touch screen display, Trip computer, Tyre pressure monitoring system, USB port, Volumetric alarm with back up horn, XDS electronic differential lock