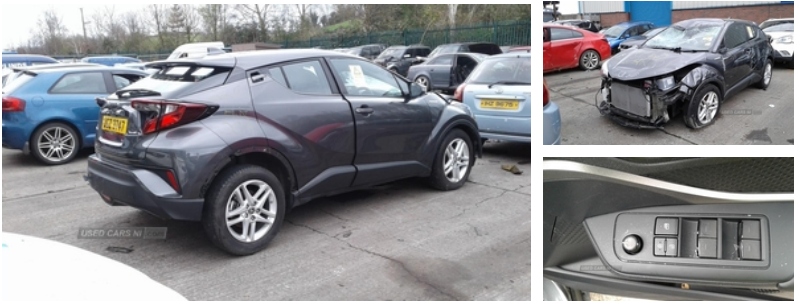




84 Armagh Road,, Dungannon, BT71 7JA
Option 3: 02837549092

Toyota C-HR 1.8 Hybrid Icon 5dr CVT | Jun 2021



ENGINE AND GEAR BOX ARE PERFECT. WE HAVE OVER A THOUSAND CARS IN STOCK WITH A GOOD RANGE OF BOTH OLD AND FRESH VEHICLES. WE OFFER FREE DELIVERY ON ALL PARTS THROUGHOUT IRELAND. PLEASE CALL* ARMAGH 048 37 549092 OPTION 3*CAMPSIE 048 71 812727*BELFAST 048 90 838176

Vehicle Features

3 rear headrests, 3 spoke leather steering wheel, 3x3 point rear seatbelts, 4.2" coloured TFT screen for multi-information display, 6 speakers, 12v power outlet - front, 16 Disk front wheel brake, 60/40 split folding rear seat, ABS+EBD+Brake assist, Acoustic vehicle alert system (AVAS), Adaptive cruise control, Adjustable rear headrests, Adjustable speed limiter switch on steering wheel, AM/FM radio, Anti-jam protection on power windows, Assist grips front and centre pillar, Audio and telephone switches on steering wheel, Auto high beam, Automatic headlights, Automatic headlights cut-off, Auto up and down function on all power windows, Black and body coloured rear bumper, Black front door assist grips, Black lower dashboard, Black upper dashboard, Black upper front grille, Bluetooth connectivity, Body colour door handles, Body colour door mirrors, Body coloured front bumper, Body colour front spoiler lip, Boot door release with push button, Boot light, Chrome interior door handles, Cloth upholstery, DAB Radio (Digital Audio Broadcasting), Driver and front passenger personal light, Driver and front passenger Whiplash Injury Lessening seats, Dual zone automatic air conditioning, Electric heated door mirrors, Electric power steering, Electronic parking brake, Floor mats, Follow me home headlights, front and rear curtain and driver's knee airbags, Front and rear power windows, Front and rear seatbelt reminder, Front cupholders, Front fog lights, Front head restraints, Front passenger airbag on/off switch, front side, Front sports seats, Glass-breaking alarm sensors, Glovebox with internal light, Grey

Fuel Type:	Hybrid Electric
Transmission:	Automatic
Colour:	Grey
Engine Size:	1798
Body Style:	Sport utility vehicle
Insurance group:	15E
Reg:	UGZ3747

Technical Specs

DIMENSIONS	
Length:	4390mm
Width:	1795mm
Height:	1555mm
Seats:	5
Luggage Capacity (Seats Up):	443L
Gross Weight:	1860KG
Max. Loading Weight:	440KG
PERFORMANCE & ECONOMY	
Fuel Consum. (Combined):	57.7MPG
Fuel Tank Capacity:	43L
Number Of Gears:	1 SPEED
Top Speed:	106MPH
Acceleration 0-100 km/h:	11s
Engine Power BHP:	120.7BHP

deco line on upper dashboard, Hard tonneau cover, Hill start assist control (HAC), Honeycomb lower front grille, Hooks for luggage holding net, Humidifying Nanoe air purifier, Hybrid system indicator, Illuminated entry system, Immobiliser, Intrusion alarm, Intrusion sensor, Isofix attachments on rear seats, Lane departure alert with steering control, Leather gearshift, LED daytime running lights, LED front light guide, LED High mounted stop light, LED rear brake lights, LED rear combination lights, Light on driver sun visor, Light on passenger sun visor, Manual headlight levelling, Manually adjustable lumbar support on driver seat, Manually height adjustable driver seat, Manually height adjustable front passenger seat, Manually reclining driver seat, Manually reclining front passenger seat, Manually retractable door mirrors, Manually sliding driver seat, Manually sliding front passenger seat, Manual telescopic steering wheel, Manual tilt steering wheel, Matte black centre console, Microphone on front personal light, Mirror on driver sun visor, Mirror on passenger sun visor, Motion sensor alarm, Multimedia switches on steering wheel, Noise reduction layer on front windows and windscreen, Pollen filter, Power adjustable door mirrors, Power door locks, Power passenger window lock, Pre-tensioners and force limiters, Pre collision system with pedestrian detection, Rear door child safety locks, Rear spoiler, Rear tailgate, Rear window defogger, Rear window wiper, Reflective LED headlights, Remote boot door release in cabin, Remote boot door release in key, Remote central locking, Reversing camera, Road sign assist - RSA, Shark fin antenna, Shopping bag hooks, Slow opening on lower glovebox, SRS Airbags - Driver + Front passenger, Toyota safety sense, Toyota touch 2 multimedia system with 8" display, Trip computer, Tyre pressure monitoring system, Tyre repair kit, USB connector, UV-filter on driver and passenger windows, UV-filter on rear windows, Vehicle Stability Control (VSC), Voice recognition, Voice recognition switch on steering wheel, Wi-fi connectivity