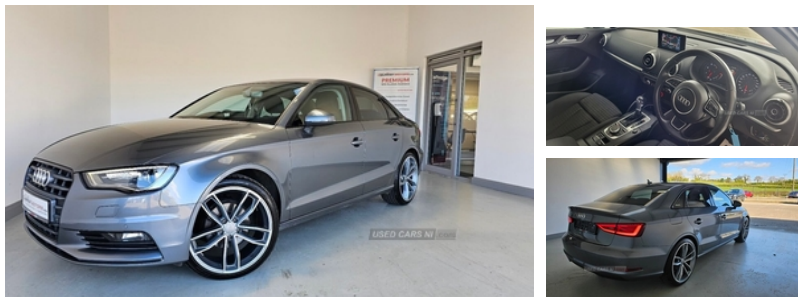


**Audi A3 1.6 TDI 110 Sport 4dr S Tronic [Nav]
| Oct 2015**

£12,495



STUNNING AUDI A3 SPORT, LOADED WITH EXTRAS, BLACK EDITION STYLE, REAR PRIVACY GLASS, NAVIGATION SYSTEM, BLUETOOTH PHONE AND MEDIA, DAB RADIO, FRONT AND REAR PARKING SENSORS, HEATED FRONT SEATS, XENON DAYTIME RUNNING LIGHTS, CLIMATE CONTROL, CRUISE CONTROL, CENTRAL DOOR LOCKING, MULTI- FUNCTION STEERING WHEEL, £20 A YEAR ROAD TAX, FITTED WITH 19" ALLOYS AN OPTIONAL EXTRA COMES WITH A FULL YEARS MOT AND 6 MONTHS WARRANTY Viewing by appointment. View all our stock and apply for finance

Vehicle Features

3 adjustable rear headrests, 3 point seatbelts on all seats, 3 spoke leather multifunction sports steering wheel, 4 lashing points to secure luggage, 60/40 split folding rear seat, ABS/EBD, Active bonnet, Active front headrests, Adjustable front armrest, Aluminium air vent surrounds, Aluminium door sill trims, Aluminium side window trim, Aluminium trim elements, Anti-theft wheel bolts, ASR, Audi drive select, Audi music interface, Body colour bumpers, Body colour door mirrors with integral indicators, Body colour roof spoiler, Chrome exhaust tailpipes, Chrome fog light surround, Coat hooks on both sides, Colour driver's information system display, Cup holders, Curtain airbags, DAB Digital radio, Diesel particulate filter, Driver/Front Passenger airbags, Driver/passenger sunvisors, Driver and passenger side airbags, Drivers knee airbag, Dual zone electronic climate control, EDL, Electro-mechanical PAS, Electromechanical parking brake, ESC - Electronic Stability Control + traction control, Front/rear floor mats, Front and rear electric windows, Front and rear interior lights with delay, Front fog lights, Front passenger airbag deactivation, Front sports seats, Heated rear window, Heated windscreen washer jets, Height/depth adjustable steering column, Height adjustable front

Miles:	81000
Fuel Type:	DIESEL
Transmission:	Semi Automatic
Colour:	Grey
Engine Size:	1598
CO2 Emission:	104
Tax Band:	B (£20 p/a)
Body Style:	Saloon
Insurance group:	19E
Reg:	IXZ3360

Technical Specs

DIMENSIONS	
Length:	4456mm
Width:	1796mm
Height:	1416mm
Seats:	5
Luggage Capacity (Seats Up):	425L
Gross Weight:	1840KG
Max. Loading Weight:	550KG

PERFORMANCE & ECONOMY	
Fuel Consum. (Urban Cold):	64.2MPG
Fuel Consum. (Extra Urban):	78.5MPG
Fuel Consum. (Combined):	72.4MPG
Fuel Tank Capacity:	50L
Number Of Gears:	7 SPEED
Top Speed:	126MPH
Acceleration 0-100 km/h:	10.7s
Engine Power BHP:	108.6BHP



seats, Illuminated glovebox, Illuminated luggage compartment, ISOFIX child seat preparation+airbag deactivation, Low washer fluid indicator, Manual rear child locks, Passenger underseat drawer, Remote control central locking, Removable rear parcel shelf, Seatbelt warning, Service interval indicator, Space saver spare wheel, Steering wheel gearshift paddles, Storage compartment in centre console, Storage compartments in doors, Thatcham category 1 alarm + immobiliser, Tyre pressure monitor, Voice control system, Warning triangle and first aid kit