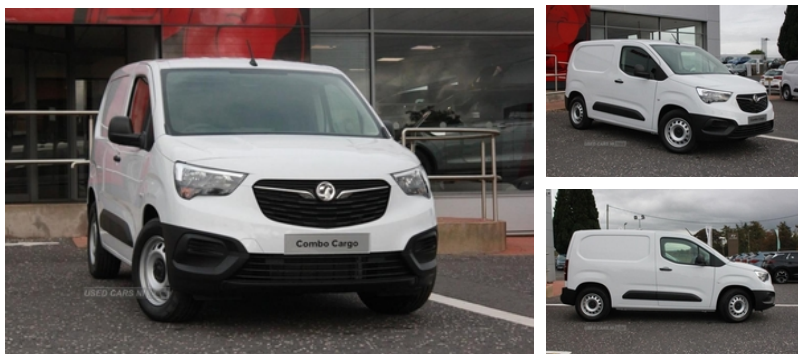


Vauxhall Combo 2300 100kW Dynamic 50kWh H1 Van Auto | Oct 2022

EX- VAUXHALL DEMONSTRATOR!

£21,490 + VAT



ELECTRIC 256 RANGE / SPARE WHEEL / REAR PARKING SENSORS

Vehicle Features

2 folding keys with integral remote control function, 3.5" colour information display, 6 way adjustable height and reach drivers seats with manual lumbar adjustment and armrest, 12 volt electrical accessory socket centre console, 16" 5 spoke alloy wheels, 16" Steel wheels with centre caps, Aluminium look instrument dials, Anti-lock braking, Anti-roll bar, Automatic lighting control, average and instantaneous fuel economy, average speed, Black door handles, Black door mirrors, Black front and rear bumpers, Cab heating system with six speed fan, Central locking activation switch on drivers door, Centrally located instrument cluster with service due indicator and trip computer data, Corner stability control, Daytime running lights, Deactivation switch for front passenger airbag and side impact airbag, Dipping rear view mirror, Door mirrors with power fold back, Drive mode selector, Driver's top lidded glovebox, Driver and front passenger sun visor and vanity mirror on rear of drivers sunvisor, Driver drowsiness system, Drivers and front passengers lap belt pretensioner system, Electrically operated front windows with safety autoreverse one touch facility, Electronically protected audio, Electronic brake force distribution, Electronic cruise control with speed limiter, Electronic stability programme, Energy absorbing steering column, Engine deadlock immobiliser, Engine drag torque control, Fabric upholstery, four adjustable facia vents, Front body lock diagonal seatbelt pretensioner system, Front seatbelt force limiters, fuel gauge with low fuel warning light and water temperature gauge warning light, Full width overhead storage

Miles:	1000
Fuel Type:	Electric
Transmission:	Automatic
Colour:	Solid - Jade White
Tax Band:	Light goods vehicle (£335 p/a)
Body Style:	Van
Reg:	GSZ6133

Technical Specs

DIMENSIONS	
Length:	4403mm
Width:	1848mm
Height:	1860mm
Seats:	2
Luggage Capacity (Seats Up):	Not AvailableL
Gross Weight:	2410KG
PERFORMANCE & ECONOMY	
Fuel Tank Capacity:	Not AvailableL
Number Of Gears:	1 SPEED
Top Speed:	81MPH
Acceleration 0-100 km/h:	11.7s
Engine Power BHP:	134.1BHP

shelf with ambient lighting, Hazard warning lights, heated door mirrors and manually folding door mirrors, Height adjustable front seatbelts, Hill start assist, Illuminated controls, Independent MacPherson front suspension with gas pressure dampers and linear-rate coil springs, Instrumentation Speedometer, Large open storage pocket behind infotainment screen, Lights on audible warning, Locking wheel bolts, Magic wash system, Manual headlight beam levelling, Mistral grey fabric side bolsters, Multi-function trip computer with trip mileage, Onboard charger - 7kW, Open storage compartment below glovebox, Rain sensitive windscreen wipers, Reach and rake adjustable steering column, Rear fog lights, Rear torsion beam with gas pressure dampers and variable rate coil springs, Reinforced passenger safety cell and front and rear deformation zones, Remote central locking and deadlocks, Remote control ultrasonic security alarm system, rev counter, Reversing lights, Side impact protection beams, Side protection moulding, Single-speed electronic drive selector, Six Fixed floor mounted load restraint lashing eyes, Small open storage compartment behind gear lever, Solar heat absorbing windscreen, Spare wheel lock, Speed sensitive electric power assisted system, Steering wheel mounted audio controls, Tinted windows, Traction control, Twin electrically adjustable, Two drinks holders in centre console, Two facia mounted drinks holders, Two large and two small open door pockets, Two speed windscreen wipers with variable intermittent wipe, Vauxhall connect, vehicle range, Visible Vehicle Identification Number (VIN), windscreen demist vents and side window demist vents