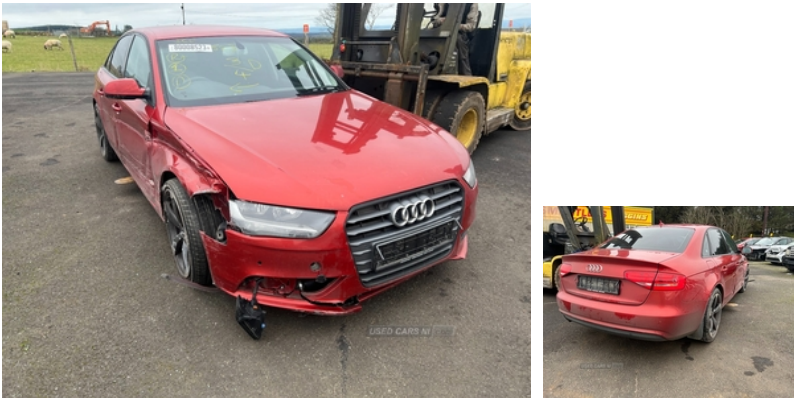




Audi A4 2.0 TDle SE Technik 4dr | Jul 2014



Vehicle Features

3 point rear seatbelts x3, 3 zone climate control, 17" 5 spoke alloy wheels, ABS/EBD, Acoustic windscreen, Adaptive driver and front passenger airbags, Aluminium door sill trims, Audi music interface, Audi parking system plus with front and rear sensors, Auto boot lid opening, Auto dimming rear view mirror, Automatic headlights + automatic windscreen wipers, Body colour bumpers, Body colour door handles, Body colour door mirrors, Cruise control, DAB digital radio module, Daytime running lights, Driver's seat height adjustment, Driver information centre with colour display in instrument panel, Electric front windows, Electric heated door mirrors, Electric rear windows, Electro-mechanical PAS, Electromechanical parking brake, ESP, Exterior aluminium pack - A4, First aid kit, Front and rear headrests, Front centre armrest with 12v socket, Front fog lights, Front seatbelt pretensioners + load limiters, Front side airbags, Headlight range control, Intelligent Key, Interior chrome pack - A4, Isofix child seat preparation for front passenger/outer rear seats inc passenger airbag deactivation, Locking wheel bolts, Reach + rake adjustable steering column, Rear armrest, Remote central locking, Service interval indicator, Split folding rear seats, Sports suspension, Technology pack - A4 SE Technik, Thatcham category 1 alarm + immobiliser, Tool kit, Top tether anchor plate for isofix child seat, Traction control, Tyre pressure monitoring system, Tyre repair kit, Warning triangle

Fuel Type:	Diesel
Transmission:	Manual
Colour:	Red
Engine Size:	1968
CO2 Emission:	112
Tax Band:	C (£35 p/a)
Body Style:	Saloon
Insurance group:	23E
Reg:	MW14NXT

Technical Specs

DIMENSIONS	
Length:	4701mm
Width:	1826mm
Height:	1427mm
Seats:	5
Luggage Capacity (Seats Up):	480L
Gross Weight:	2025KG
Max. Loading Weight:	550KG
PERFORMANCE & ECONOMY	
Fuel Consum. (Urban Cold):	54.3MPG
Fuel Consum. (Extra Urban):	76.3MPG
Fuel Consum. (Combined):	65.7MPG
Fuel Tank Capacity:	63L
Number Of Gears:	6 SPEED
Top Speed:	134MPH
Acceleration 0-100 km/h:	9.3s

Engine Power BHP: 134.1BHP