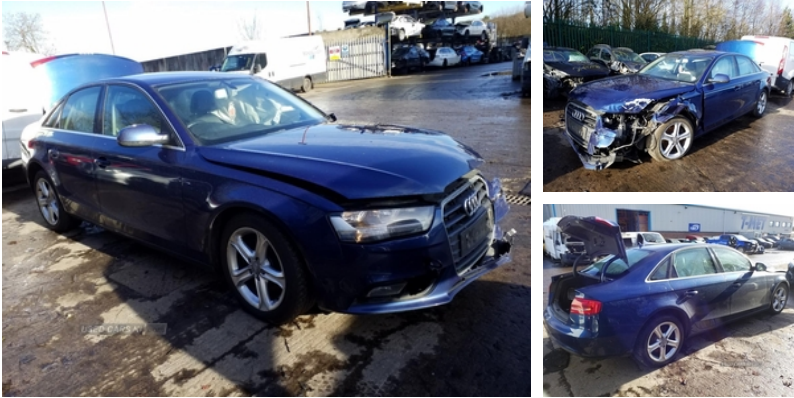




84 Armagh Road Dungannon, , BT71 7JA
Option 3: 02837549092

Audi A4 2.0 TDI Ultra 163 SE Technik 4dr | May 2015

2015 AUDI A4 BREAKING FOR PARTS



Breaking a wide range of cars with hundreds in stock. For any queries on a part for this car or any other particular car give T-met a call on

ARMAGH - 028 3754 9092 option 3
CAMPSIE - 028 7181 2727 option 2
BELFAST - 028 9083 6252 option 3
COLERAINE - 028 7035 1404

Vehicle Features

3 point rear seatbelts x3, 3 zone climate control, 12V socket in luggage compartment, 17" 5 spoke alloy wheels, ABS/EBD, Acoustic windscreen, Adaptive driver and front passenger airbags, Aluminium door sill trims, Auto boot lid opening, Auto dimming rear view mirror, Automatic headlights + automatic windscreen wipers, Aux input, Body colour bumpers, Body colour door handles, Body colour door mirrors, DAB digital radio module, Driver's seat height adjustment, Driver information centre with colour display in instrument panel, Electric front windows, Electric heated door mirrors, Electric rear windows, Electro-mechanical PAS, Electromechanical parking brake, ESP, Exterior aluminium pack - A4, First aid kit, Front and rear headrests, Front centre armrest with 12v socket, Front fog lights, Front seatbelt pretensioners + load limiters, Front side airbags, Headlight range control, Intelligent Key, Interior chrome pack - A4, Isofix child seat preparation for front passenger/outer rear seats inc passenger airbag deactivation, Locking wheel bolts, Reach + rake adjustable steering column, Rear armrest, Remote central locking, Service interval indicator, Space saver spare wheel, Split folding rear seats, Sports suspension, Thatcham

| | |
|-------------------------|-------------|
| Fuel Type: | Diesel |
| Transmission: | Manual |
| Colour: | Blue |
| Engine Size: | 1968 |
| CO2 Emission: | 109 |
| Tax Band: | B (£20 p/a) |
| Body Style: | Saloon |
| Insurance group: | 27E |
| Reg: | DE15OSC |

Technical Specs

| DIMENSIONS | |
|-------------------------------------|--------|
| Length: | 4701mm |
| Width: | 1826mm |
| Height: | 1427mm |
| Seats: | 5 |
| Luggage Capacity (Seats Up): | 480L |
| Gross Weight: | 2090KG |
| Max. Loading Weight: | 550KG |

| PERFORMANCE & ECONOMY | |
|------------------------------------|----------|
| Fuel Consum. (Urban Cold): | 56.5MPG |
| Fuel Consum. (Extra Urban): | 74.3MPG |
| Fuel Consum. (Combined): | 67.3MPG |
| Fuel Tank Capacity: | 63L |
| Number Of Gears: | 6 SPEED |
| Top Speed: | 140MPH |
| Acceleration 0-100 km/h: | 8.3s |
| Engine Power BHP: | 160.9BHP |

category 1 alarm + immobiliser, Tool kit, Top tether anchor plate for isofix child seat, Traction control, Tyre pressure monitoring system, Warning triangle