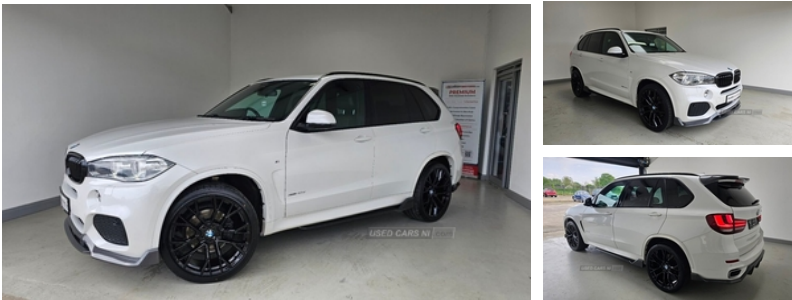


BMW X5 xDrive40d M Sport 5dr Auto [7 Seat] | Jul 2017

£24,995



STUNNING BMW X5 LOADED WITH SPEC, M-PERFORMANCE KITTED, 7 SEATER, 2 KEYS, REVERSE CAMERA, BLUETOOTH PHONE AND MEDIA, FRONT AND REAR PARKING ASSIST, CLIMATE CONTROL, CRUISE CONTROL, ELECTRIC TAILGATE, HEATED FRONT LEATHER SEATS, LED LIGHTS, REAR PRIVACY GLASS, FITTED WITH 22" ALLOYS AN OPTIONAL EXTRA Viewing by appointment. View all our stock and apply for finance

Vehicle Features

2 individual folding 3rd row seats, 2 x 12V socket in rear centre console, 3 rear 3 point seatbelts, 6.5" colour display screen, 12V accessory power point in centre console, 12V socket in luggage compartment, 20GB Hard drive, 40:20:40 split folding rear seats, ABS, Adaptive M suspension, ADB - Automatic Differential Brake, Ambient interior lighting, Anthracite Velour floor mats, Auto dimming rear view mirror, Automatic Stability Control (ASC), Auto upper tailgate release, Auxiliary point for auxiliary devices, BMW emergency call, BMW online + Apps interface, BMW professional twin tuner radio with single CD player and MP3 CD playback facility, BMW remote services, BMW Teleservices, Body colour bumpers, Body colour door handles, Body colour door mirrors, Boot lashing points, Brake force display, CBC - (Cornering brake control), Check control system, Child locks on rear doors, Chrome exhaust tailpipes, Clear indicator lenses, Crash Sensor - activates hazard/interior lighting + unlocks doors, DAB Digital radio, Diesel particulate filter, Door mirror integrated indicators, Double kidney grille with chrome surround and black slats, Downlights in exterior door handles, Driver/Front Passenger airbags, DSC - Dynamic Stability Control, Dynamic brake control, Dynamic Traction Control - DTC, Electric folding/heated door mirrors + electrochromic on drivers side, Electric front/rear windows with anti-trap, Electric front seats + driver memory, Electric headlight adjustment, Electronic brake

Miles:	83000
Fuel Type:	DIESEL
Transmission:	Automatic
Colour:	White
Engine Size:	2993
CO2 Emission:	159
Tax Band:	Petrol/Diesel (£190 p/a)
Body Style:	Sport utility vehicle
Insurance group:	44E
Reg:	GGZ9732

Technical Specs

DIMENSIONS

Length:	4886mm
Width:	1938mm
Height:	1762mm
Seats:	7
Luggage Capacity (Seats Up):	575L
Gross Weight:	3030KG
Max. Loading Weight:	879KG

PERFORMANCE & ECONOMY

Fuel Consum. (Urban Cold):	41.5MPG
Fuel Consum. (Extra Urban):	50.4MPG
Fuel Consum. (Combined):	47.1MPG
Fuel Tank Capacity:	85L
Number Of Gears:	8 SPEED
Top Speed:	147MPH
Acceleration 0-100 km/h:	5.9s
Engine Power BHP:	308.4BHP

force distribution, Electronic parking brake, Extended storage pack - X5, Follow me home headlights, Front/rear courtesy lights with soft on/off dimming, Front/rear reading lights, Front and rear cupholders, Front and rear head airbags, Front armrest with storage bin, Front passenger airbag deactivation, Front passenger seat occupancy sensor, Front side airbags, Gearshift paddles on steering wheel, Green tinted glass, Headlight washer jets, Heated front seats, Heated washer nozzles, Heat insulated glass, Height adj rear head restraints, Height adjustable front seatbelts, Hill start assist, Illuminated glovebox with lock, Individual door sill finishers, Intermittent rear wash/wipe, Isofix child seat preparation, LED footwell lights, Lights on warning, Locking wheel nuts, Luggage compartment cover, M aerodynamic body kit, M leather steering wheel, On board computer, Outside temperature gauge, Park distance control, Professional multimedia navigation system, Pyrotechnically pretensioned front seatbelts, Rain sensor with auto light activation system, Reach + rake adjustable steering column, Real time traffic information, Remote central locking, Remote tailgate release, Run flat tyres, Securing rings in luggage compartment, Service interval indicator, Servotronic PAS, Sport automatic transmission, Stop/start button, Storage bins on all doors, Sunvisors with illuminated vanity mirrors, Thatcham cat 1 remote alarm/immobiliser, Tilt/height adjustable front head restraints, Toolkit located in luggage compartment, Two piece tailgate, Tyre pressure monitor, Voice control system, Warning triangle and first aid kit