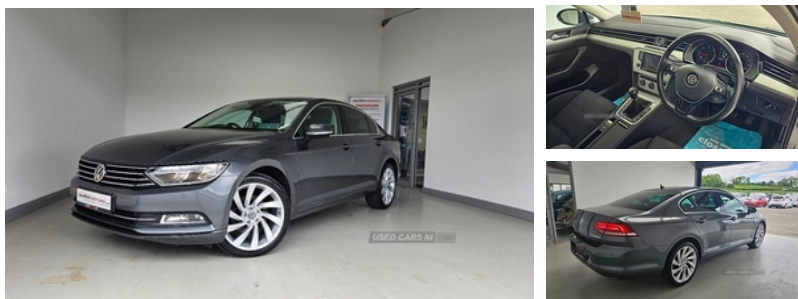


Volkswagen Passat 2.0 TDI SE Business 4dr | Jun 2016

£9,495



2 keys, bluetooth phone and media, service history, parking sensors, navigation system, climate control, cruise control, multi-function steering wheel, rear privacy glass, £20 a year road tax, fitted with 19" alloys an optional extra Viewing by appointment. View all our stock and apply for finance

Vehicle Features

3 rear 3 point seatbelts, 3 rear head restraints, 3 spoke multi-function leather steering wheel, 4 boot load lashing points, 12V socket in luggage compartment, 60/40 split folding rear seat, ABS, Adaptive cruise control, Alarm with interior protection, Analogue clock, Auto dimming driver's door mirror, Auto dimming rear view mirror, Automatic activation of hazard warning lights, Automatic post collision braking, Auxiliary socket for external device, Body colour bumpers, Body colour door handles, Body coloured bumpers, Body coloured door handles, Body coloured door mirrors, brake assist and EBD, Chrome air vent and instrument surround, Chrome fog light surround, Chrome louvres in grille, Chrome side window surrounds, Chrome surround for air intake, Coming/leaving home lighting function, Composition media system with Radio/CD/MP3, cooled glovebox, Curtain airbags, DAB Digital radio, Diesel particulate filter, Door/boot open warning light, Driver's cushion tilt adjust, Driver/Front Passenger airbags, Driver/Front passenger WOKS head restraints, Driver alert system, Drivers knee airbag, Electrically adjustable and heated door mirrors, Electric front windows, Electric rear windows, Electronic engine immobiliser, Electronic parking brake with auto hold, Entry lights on doors, ESP with EDL + ASR, Exterior temperature gauge with frost alarm, First aid kit, Front + rear carpet mats, Front and rear interior lighting with delay and dimming function, Front assist including city emergency braking, Front centre armrest with 12v socket, Front centre armrest with storage compartment, Front

Miles:	83000
Fuel Type:	DIESEL
Transmission:	Manual
Colour:	Grey
Engine Size:	1968
CO2 Emission:	106
Tax Band:	B (£20 p/a)
Body Style:	Saloon
Insurance group:	19E
Reg:	RJ16NKZ

Technical Specs

DIMENSIONS	
Length:	4767mm
Width:	1832mm
Height:	1456mm
Seats:	5
Luggage Capacity (Seats Up):	586L
Gross Weight:	2020KG
Max. Loading Weight:	620KG

PERFORMANCE & ECONOMY	
Fuel Consum. (Urban Cold):	60.1MPG
Fuel Consum. (Extra Urban):	78.5MPG
Fuel Consum. (Combined):	70.6MPG
Fuel Tank Capacity:	66L
Number Of Gears:	6 SPEED
Top Speed:	136MPH
Acceleration 0-100 km/h:	8.7s
Engine Power BHP:	147.5BHP

comfort seats, Front cupholders x2 with covers, Front door pocket bottle holders, Front fog lights with static cornering function, Front side airbags, Headlight range control, Heated rear window, Height/reach adjust steering wheel, Height adjustable front 3 point seatbelts + pretensioners, Hill hold function, illuminated, Keyless Start, Leather gearknob, Load through provision, Lockable, Low washer fluid warning light, Luggage compartment lighting, MDI with USB/iPod connection cables, Mirror pack - Passat, Multifunction computer, Passenger airbag deactivation system, Pre crash system, Rain sensor, Rear centre armrest with cupholder and storage, Rear side airbags, Remote boot release, Remote central locking with 2 remote folding keys, Remote fuel flap release, SD card slot, Service interval indicator, Speed limiter, Speed sensitive power steering, Storage compartment in driver's door, Storage compartment in passenger's door, Storage compartment in rear doors, Storage compartment in roof console, Storage pockets in backrests of front seats, Sunvisors with illuminated vanity mirrors, Variable boot floor, Warning buzzer and light for front seatbelts unfastened, Warning triangle, White instrument dials, Windscreen wipers/ intermittent wipe + 4 position delay