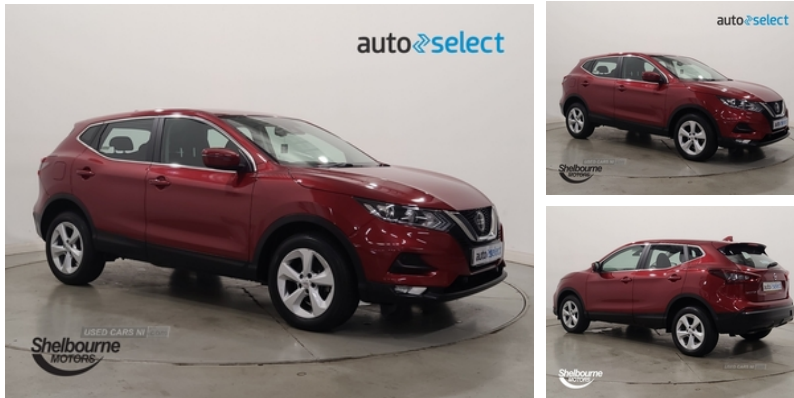


Nissan Qashqai 1.3 DiG-T 160 Acenta Premium 5dr DCT | 2020

£15,749

1 OWNER FSH AUTO LOW MILES



Vehicle Features

2 X front 12v power sockets, 3 height adjustable rear headrests, 6 airbags - Driver, 6 speakers, 17" alloy wheels, 60/40 split folding rear seat, ABS, Advanced drive assist display 5" TFT coloured screen, AM/FM radio, Ambient lighting in centre console, Android Auto, Anti-theft immobiliser, Anti dazzle rear view mirror, Apple CarPlay preparation, Auto hold function, Auto wipers, Aux-in socket, Bluetooth connectivity, Body colour bumpers, Body coloured door handles, Body coloured door mirrors, Boot lighting, CD audio system, Centre console storage box/armrest, Child locks on rear doors, Chrome interior door handles, Chrome window surround, Cloth upholstery, Cruise control + speed limiter, curtain and side airbags, DAB Digital radio, Daytime running lights dip function when turn signal applied, Driver's seat manual height adjust, Dual zone climate control, EBD and brake assist, Electrically adjustable door mirrors, Electric folding door mirrors, Electric front/rear windows, Electric front and rear one touch illuminated window controls, Electric speed sensitive power steering, Electronic parking brake, ESP, Front and rear door pockets with bottle holders, Front and rear seat belt pre-tensioners with load limiters, Front and rear seat belt warning, Front fog lights, Front parking sensors, front passenger, Front passenger airbag deactivation, Halogen headlights, Heated door mirrors, Height adjustable front headrests, Height adjustable front seatbelts, High beam assist, Hill start assist, Intelligent auto headlights, Intelligent emergency braking with pedestrian recognition, intelligent engine brake), intelligent trace control, ISOFIX on outer rear seats, Lane departure warning system, Leather D shaped steering wheel,

Miles:	17826
Fuel Type:	Petrol
Transmission:	Semi Auto
Colour:	Red
Engine Size:	1332
Tax Band:	Petrol/Diesel (£190 p/a)
Body Style:	Sport utility vehicle
Insurance group:	18E
Reg:	RGZ8960

Technical Specs

DIMENSIONS	
Length:	4394mm
Width:	1815mm
Height:	1590mm
Seats:	5
Luggage Capacity (Seats Up):	430L
Gross Weight:	1885KG
Max. Loading Weight:	570KG
PERFORMANCE & ECONOMY	
Fuel Consum. (Urban Cold):	42.2MPG
Fuel Consum. (Extra Urban):	61.4MPG
Fuel Consum. (Combined):	52.3MPG
Fuel Tank Capacity:	55L
Number Of Gears:	7 SPEED
Top Speed:	123MPH
Acceleration 0-100 km/h:	9.9s
Engine Power BHP:	158.2BHP

Leather gear lever, Leather knee pad, LED indicators in door mirrors, Manual height adjustable front passenger seat, Manual lumbar support on driver seat, Nissan chassis control (intelligent ride control, Nissan connect evo 7" touchscreen navigation and entertainment system, Normal or sport selectable steering, Outside temperature sensor, Parcel shelf stow function under luggage board, Piano black dash trim, Pollen filter, Rear armrest with 2 cupholders, Rear parking sensors, Rear roof spoiler, Rear view camera, Rear wiper with reverse link, Remote central locking, Service interval indicator, Shark fin antenna, Signature LED daytime running lights, Smartphone integration, Steering wheel mounted audio controls, Stop/start system, Thatcham Cat.1 alarm, Three 3 point rear seatbelts, Tilt/telescopic adjust steering wheel, Tomtom connected services, Traffic sign recognition, Trip computer, Tyre pressure monitoring system, Tyre puncture repair kit, Underbody vortex generators, USB port, Voice control system