

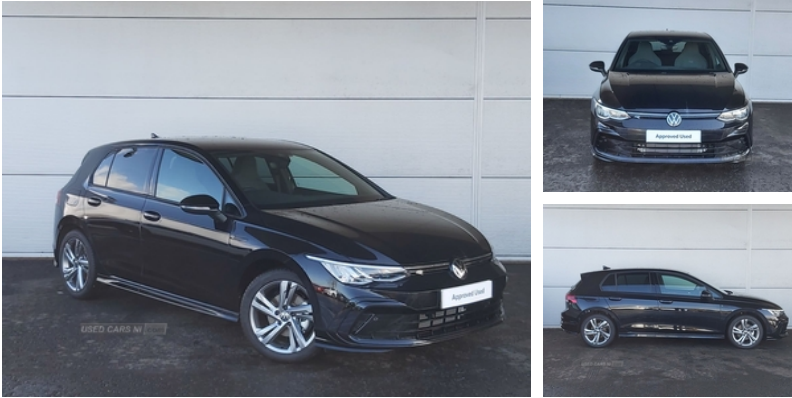


Phillips (Lisburn) Ltd

58 Saintfield Road, Lisburn Co Antrim, BT27 5BE
Sales: 02892 664354

Volkswagen Golf 1.5 TSI R-Line 5dr | 2024 2 YEAR WARRANTY & BREAKDOWN, DEMO SAVE £ 3, 000

£27,495



Miles:	9999
Fuel Type:	Petrol
Transmission:	Manual
Colour:	Deep Black
Engine Size:	1498
Tax Band:	Petrol/Diesel (£190 p/a)
Body Style:	Hatchback
Insurance group:	18E
Reg:	HSZ9614

Vehicle Features

3 point height adj front seatbelts + pretensioners, 3 rear head restraints, 3 rear three point seatbelts, 3 seat bench in 2nd row, 12V socket in front centre console, 12V socket in luggage compartment, 17 Alloy Wheels, ABS, Adaptive Cruise Control, Adaptive cruise control ACC with speed limiter and front assist (reacting to vehicles, Air Conditioning, Alarm with interior protection and deactivation via infotainment system, Ambient lighting, Ambient lighting - Customisable 30 colour ambient lighting, App Connect (Apple Carplay / Android Auto), Auto dimming rear view mirror, Automatic headlamp activation with Coming home and Leaving home feature, Automatic headlights, Automatic Headlights (Dusk Sensor), Automatic Wipers (Rain Sensor), Black roof lining, Bluetooth Phone Connection, Body colour door handles, Body colour door mirrors with integrated indicators, Body colour rear roof spoiler, Brushed stainless steel pedals, Car2X communication, Carbon grey decorative inserts in dash and front door trim panels, Child locks on rear doors, Chrome plated surround to electric mirror button, Colour Touch Screen Radio, Digital cockpit pro - 10.25" high resolution TFT dash display screen with customizable menus and information, Digital Dash, Discover Navigation System, Driver alert system, Driver and front passenger airbag with front passenger airbag deactivation, Driver profile selection, Drivers and front passengers safety optimised head restraints, Drivers and front passengers sun visors with vanity mirrors, Dynamic road sign display, eCall - Emergency call service for SOS calls to emergency response, Electrically Adjustable Mirrors, Electrically heated and adjustable door mirrors with memory feature,

Technical Specs

DIMENSIONS	
Length:	4284mm
Width:	1789mm
Height:	1480mm
Seats:	5
Luggage Capacity (Seats Up):	381L
Gross Weight:	1800KG
Max. Loading Weight:	569KG
PERFORMANCE & ECONOMY	
Fuel Consum. (Combined):	51.4MPG
Fuel Tank Capacity:	45L
Number Of Gears:	6 SPEED
Top Speed:	133MPH
Acceleration 0-100 km/h:	9.2s
Engine Power BHP:	128.7BHP



Used Cars NI can take no responsibility for any errors which may appear in listings. Please confirm details with the seller when making an enquiry.

Electric Windows, Electronic engine immobiliser, electronic odometer, Electronic parking brake with auto hold, ESC (Electronic Stability Control), Extended pedestrian protection measures, exterior illuminated styling elements at the sides, exterior temperature and fuel gauge, Front + rear carpet mats, Front and rear electric windows, Front and rear passengers curtain airbag system including front side airbags, Front centre airbag, Front centre armrest with storage compartment, Front cupholders x 2, Front disc brakes, Front passenger seat, Front reading lights x 2 incorporating LED technology, Front seat lumbar support adjuster, Front side airbags with curtain airbags, Front sports seats, Glovebox, Heated Multi-Function Steering Wheel, Heated rear windscreen, Heat insulating glass windscreen, Height adjustable front seats, Height and reach adjustable steering wheel, High gloss black centre console, High level 3rd brake light, Highway light, Isofix child seat preparation for 2 rear child seats and front passenger seat, Keyless Start, Lane assist, LED Headlights, LED License plate illumination, Luggage compartment lighting, Mobile phone interface with wireless inductive charging function, Multi-function Steering Wheel, Multifunction camera for distance control, Parking Sensors (Front and Rear), pedestrians and cyclists), Petrol Particulate Filter, Premium USB cable in choice of either Apple or Android smartphone compatibility, Progressive steering, R-Line leather wrapped multi function sports heated steering wheel, Rain sensor, Rear disc brakes, Rear fog light on one side and reversing lights on both sides, Rear lights incorporating LED technology, Rear side wing doors, Rear tinted glass 65% light absorbing from B pillar backwards, Rear windscreen washer and wiper with interval delay, Remote Central Locking, Removable luggage compartment cover, rev counter, R Line body coloured bumpers, R Line door and side trim panel, R Line front seats integrated head restraints, Sardegna cloth upholstery with front and outer rear seats Art Velour inner sides of bolsters, service interval display, Speedo, Split folding backrest with centre armrest and unsplit rear seat bench, Start/Stop function, Stop/Start Technology, Tinted Rear Windows, trip, Two tone horn, Tyre pressure monitoring system, USB-C ports in the front and rear centre console with increased charging performance, Warning buzzer and light for front seatbelts unfastened, Welcome light, window switch and air vent surrounds, Wireless app connect, Woven fabric storage compartments in front and rear doors, XDS electronic differential lock for improved traction and handling