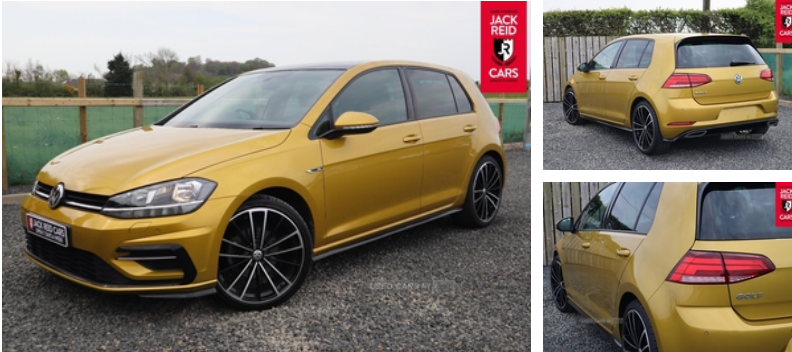


Volkswagen Golf 1.5 TSI EVO 150 R-Line 5dr DSG | Nov 2018

£18,950

PANORAMIC SUNROOF* *CAR- NET APP- CONNECT



Check out what's all included in this 2018 Volkswagen Golf 1.5 TSI EVO 150 R-Line 5dr DSG:

- . Panoramic sunroof
- . Winter Pack
- . Tumeric Yellow Metallic Paint
- . 8" colour touch screen
- . Car-Net App-Connect
- . Ultrasonic front and rear optical and audible parking sensors
- . Driving Mode Selection
- . Composition media system

If you like the look of this car and would like to come for a look or an unaccompanied test drive* feel free to call down anytime or get in touch to make an appointment. We are open 7 days a week for your convenience!

We have one of the largest numbers of cars for sale in our area with up to 200 cars in stock ready to view! We stock a variety of makes and models such as Audi, BMW, Seat, Range Rover, Mercedes, Jaguar and many more!

All our cars come warranted by Jack Reid Cars meaning that we make all our decisions in house unlike unreliable warranty companies with too many terms and conditions.

We look forward to hearing from you!

This car is shown with an optional new alloy wheel and tyre upgrade or it can be returned to the standard wheels, whichever suits you best. Please contact sales for pricing.

Miles:	35476
Fuel Type:	Petrol
Transmission:	Semi-Automatic
Colour:	Yellow
Engine Size:	1498
CO2 Emission:	119
Tax Band:	Petrol/Diesel (£190 p/a)
Body Style:	Hatchback
Insurance group:	19E
Reg:	DG68NZF

Technical Specs

DIMENSIONS

Length:	4258mm
Width:	1799mm
Height:	1492mm
Seats:	5
Luggage Capacity (Seats Up):	380L
Gross Weight:	1810KG
Max. Loading Weight:	568KG

PERFORMANCE & ECONOMY

Fuel Consum. (Urban Cold):	43.5MPG
Fuel Consum. (Extra Urban):	62.8MPG
Fuel Consum. (Combined):	54.3MPG
Fuel Tank Capacity:	50L
Number Of Gears:	7 SPEED
Top Speed:	134MPH
Acceleration 0-100 km/h:	8.3s

Vehicle Features

'Lights On' warning buzzer, 3 rear headrests, 3 rear three point seatbelts, 4 load lashing points in luggage compartment, 8 speakers, 8" colour touch screen, 12V socket in luggage compartment, 60/40 split folding rear seat backrest, ACC - Adaptive cruise control with front assist, Airbags - Driver's and front passenger's, Alarm with interior protection, Ambient lighting pack - Golf, Anti-lock Braking System (ABS) with Hydraulic Brake Assist (HBA), Automatic coming/leaving home lighting function, Automatic dimming rear view mirror/rain sensor, Automatic post collision braking system, aux-in, Bag hook in luggage compartment x 2, Battery regeneration during braking, Black front air intake and radiator grille with chrome insert, Black roof lining, Black sports rear diffuser, Bluetooth telephone and audio connection for compatible devices, Body colour bumpers, Body colour door handles, Body colour door mirrors with integrated indicators, Brake pad wear indicator warning light, Car-Net App-Connect, CD/MP3/WMA, Child locks on rear doors, Chrome grille surround, Chrome plated air vent surround, Chrome plated electric mirror adjustment light switch surround, Chrome trimmed front air intake surrounds, city emergency brake and speed limiter, city emergency braking + predictive pedestrian protection, Composition media system, Cooled glovebox, curtain airbag, DAB Digital radio receiver, Dark Diamond decorative inserts in dash and door panels, distance monitoring, door mirror puddle lights and reverse activated kerb-view adjustment on passengers door mirror, Driver's knee, Driver/Passenger optimised head restraints, Driver alert system, Driver profile selection, Driving Mode Selection with four preset modes - Eco, Dust/pollen filter, Electrically adjustable and heated door mirrors, Electric front windows, Electric rear windows, Electronic engine immobiliser, electronic odometer, Electronic parking brake with auto hold, Electronic stability control (ESC) including Electronic differential lock (EDL) and ASR (Traction control) with deactivation via infotainment system, exterior temperature and fuel gauge, Front + rear carpet mats, Front assist, Front assistant collision mitigation, Front centre armrest with storage compartment and two rear air vents, Front reading lights, Front seat back storage pockets, front side impact and passenger's airbag deactivation switch, Galvanised body, Grab handles front x 2, Heated rear windscreen, height adjustable and removable, Height and reach adjustable steering wheel, High level 3rd brake light incorporating LED Technology, Illuminated vanity mirrors, Instrument cluster in white, Instrument lighting white adjustable panel illumination, Interior light delay, Isofix preparation for 2 rear child seats, LED front and rear reading lights, Left and right chrome effect trapezoid dummy exhaust

tailpipe surrounds, Load through provision with rear centre armrest and cupholders x2, Lowered sports suspension, Luggage compartment light, Mirror pack - Golf, Multifunction computer with visual gear change recommendation for fuel consumption, Multifunction leather steering wheel with grey stitching leather trimmed gear knob including paddle shift, Multifunction leather steering wheel with leather trimmed gear knob including paddle shift, normal, Overhead storage box, Piano black centre console with aluminium inlay, Power assisted speed sensitive electro-mechanical steering, Pre crash preventive occupant protection, radar sensor controlled distance monitor, Range adjustable headlights via infotainment system with LED daytime running lights, Rear number plate lights incorporating LED technology, Rear tinted glass 65% light absorbing from B pillar backwards, Rear window aerial, Rear window wash/wipe with intermittent wipe, rear x 2 with integrated coat hooks, Reflectors in all doors, Remote central locking with 2 remote folding keys, Remote electrically foldable door mirrors, rev counter, R Line badge, R Line Styling pack - Golf, service interval display, SMS Functionality, Speedo, sport or individual modes, Stainless steel door sill protection, Stainless steel pedals, Steel space saver spare wheel, Stop/start system, Storage box in luggage compartment, Storage compartment in roof console with cover, Storage compartments in front doors, Storage compartments in rear doors, Stowable luggage compartment cover, Sun visors, Three point height adjustable front seatbelts with tensioners, Three spoke multi-function leather trimmed steering wheel and gearknob, trip, Tyre pressure loss indicator, Ultrasonic front and rear optical and audible parking sensors, USB and SD card reader, Variable boot floor, Warning buzzer and light for front seatbelts unfastened, Windscreen wipers/ intermittent wipe + 4 position delay, XDS electronic differential lock