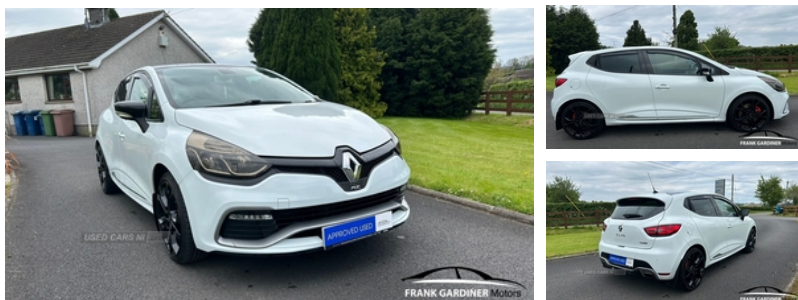


Renault Clio 1.6T 16V Renaultsport Lux 200 5dr EDC | Oct 2013

* 1 YEAR MOT *

£7,495



The 2013 Renault Clio Renaultsport is a sporty and agile subcompact hatchback known for its impressive performance and handling. With a turbocharged engine delivering ample power and a well-tuned chassis, the Clio Renaultsport offers a dynamic driving experience. The exterior design is sleek and modern, and the interior is stylish and well-appointed with sporty touches. Overall, the 2013 Renault Clio Renaultsport is a fun and engaging hot hatch that excels in both city driving and spirited outings on twisty roads.

Welcome to Frank Gardiner Car Sales

We are a quality used car dealer with a wide range of cars to suit all budgets. We put customer care at the center of everything we do, endeavoring to provide an excellent service at all times.

Our standards have built our reputation and we are proud that our customers recommend us, trust us and come back to us when they want another car.

We are passionate about delivering a high quality service and building trust with our customers.

The cars we offer are excellent value for money and prepared to a very high standard.

Vehicle Features

2 coat hooks, 2 tweeters+fingertip control, 3 point rear seatbelts x3, 3 rear height adjustable headrests, 3D sound, 12V Accessory socket, 60/40 split rear seats, ABS+EBD+Brake assist, Air

Miles:	77000
Fuel Type:	Petrol
Transmission:	Semi-Automatic
Colour:	White
Engine Size:	1618
CO2 Emission:	144
Tax Band:	F (£210 p/a)
Body Style:	Hatchback
Insurance group:	29E
Reg:	Y1B300

Technical Specs

DIMENSIONS	
Length:	4062mm
Width:	1731mm
Height:	1448mm
Seats:	5
Luggage Capacity (Seats Up):	300L
Gross Weight:	1711KG
Max. Loading Weight:	507KG

PERFORMANCE & ECONOMY	
Fuel Consum. (Urban Cold):	34.9MPG
Fuel Consum. (Extra Urban):	55.4MPG
Fuel Consum. (Combined):	44.8MPG
Fuel Tank Capacity:	45L
Number Of Gears:	6 SPEED
Top Speed:	143MPH
Acceleration 0-100 km/h:	6.7s
Engine Power BHP:	197.1BHP

recirculation control, Aluminium foot pedals, Anthracite rear diffuser, Anti-drill door locks, Auto climate control, Automatic headlights + automatic windscreen wipers, Black air vent surround, Black gloss door mirror housings, Black headlamp surrounds, bluetooth handsfree, Body coloured bumpers, Body coloured lower front bumper, Body coloured rear spoiler, Body coloured side skirts, Body colour side mouldings, Child lock control of rear doors and windows, Chrome instrument dial surround, Chrome interior door handles, Cruise control + speed limiter, Curtain airbags, Dark carbon soft touch dashboard, Daytime running lights, Driver's seat height adjustment, Driver/Front Passenger airbags, Driver/front passenger side airbags, Electric adjustable door mirrors, Electric folding door mirrors, Electric front windows + one touch + anti-pinch, Electric rear windows, ESP + Traction control + Understeer control, Extra tinted glass in rear windows and tailgate, Folding front passenger seat, Front cupholder, Front passenger airbag deactivation, Front wipers with intermittent delay, Gear shift indicator, Gloss black centre console, Gloss black dashboard inserts, Glovebox, Hands free Renault card, Height/reach adjust steering wheel, Height adjustable driver's seatbelt, Height adjustable front headrests, Hill start assist, Isofix system on outer rear seats, Leather gear knob with satin chrome insert, Locking fuel filler cap, Passenger dashboard tray, Pollen filter, R-Link Multimedia sys with 7" touch screen, RAID (Renault Anti-Intruder Device), Rear wiper, Remote central locking, Renaultsport leather steering wheel with stitched red centre band, Seatbelt warning, Thatcham Cat 2 engine immobiliser, Tinted windows, Tom Tom Navigation & 4x35W Arkamys radio, Trip computer, Twin chromed exhaust pipes, Tyre inflation kit, USB, USB connection, Variable PAS