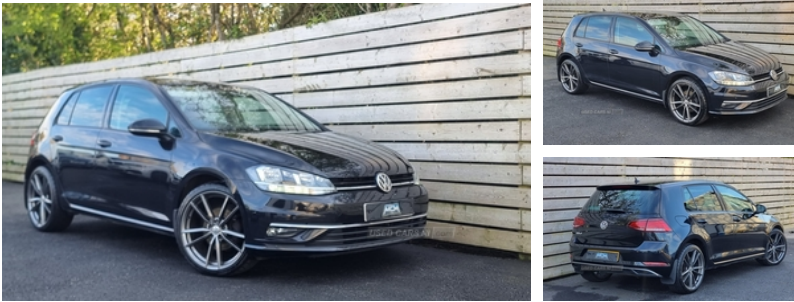




Pearse: 07960134850

Volkswagen Golf 1.6 TDI Match 5dr | Jul 2019 12 MONTH WARRANTY INCLUDED THIS MONTH !!

£10,750



2019 VOLKSWAGEN GOLF TDI

2 KEYS
ONE COMPANY OWNER FROM NEW
WILL COME WITH A FULL YEARS MOT

12 MONTH WARRANTY

PLEASE NOTE THE WHEELS AND TYRES IN PHOTOS ARE AN
OPTIONAL EXTRA £

Spec:

Driver Convenience

'Lights On' warning buzzer
ACC - Adaptive cruise control with front assist, distance monitoring, city emergency brake and speed limiter
Bluetooth telephone and audio connection for compatible devices
Brake pad wear indicator warning light
Driver alert system
Driver profile selection
Driving Mode Selection with four preset modes - Eco, normal, sport or individual modes
Instrument cluster in white
Misfuelling protection device
Multifunction computer with visual gear change recommendation for fuel consumption
Power assisted speed sensitive electro-mechanical steering
Push tank flap
Speed limit display
Speedo, rev counter, electronic odometer, trip, service interval display, exterior temperature and fuel gauge
Stop/start system
Warning buzzer and light for front seatbelts unfastened
Entertainment

Composition media system
DAB Digital radio receiver
Driver Personalisation profile selection
MP3/WMA compatability
Multi device interface (MDI) with USB connection
Personalisation 1.1 profile for media
Premium USB cable in choice of either Apple or Android smartphone compatibility
SD card slot
SMS
Functionality
USB and SD card connectivity

Miles:	93112
Fuel Type:	Diesel
Transmission:	Manual
Colour:	Black
Engine Size:	1598
CO2 Emission:	108
Tax Band:	Petrol/Diesel (£190 p/a)
Body Style:	Hatchback
Insurance group:	13E
Reg:	RN19EEP

Technical Specs

DIMENSIONS

Length:	4258mm
Width:	1799mm
Height:	1492mm
Seats:	5
Luggage Capacity (Seats Up):	380L
Gross Weight:	1800KG
Max. Loading Weight:	499KG

PERFORMANCE & ECONOMY

Fuel Consum. (Urban Cold):	60.1MPG
Fuel Consum. (Extra Urban):	74.3MPG
Fuel Consum. (Combined):	68.9MPG
Fuel Tank Capacity:	50L
Number Of Gears:	5 SPEED
Top Speed:	123MPH
Acceleration 0-100 km/h:	10.2s



Exterior Features

Black front air intake and radiator grille with chrome insert
 Black rear diffuser
 Body colour bumpers
 Body colour door handles
 Body colour door mirrors with integrated indicators
 Dusk sensor + automatic driving lights
 Electric front windows
 Electric rear windows
 Electrically adjustable and heated door mirrors
 Fully galvanised body
 Heated rear windscreen
 Hidden exhaust pipe
 High level 3rd brake light incorporating LED Technology
 LED daytime running lights
 LED front fog lights with static cornering light function
 Rear fog lamp
 Rear tinted glass 65% light absorbing from B pillar backwards
 Rear window aerial
 Rear window wash/wipe with intermittent wipe
 Reflectors in all doors
 Tailgate with integrated rear roof spoiler
 Windscreen wipers/ intermittent wipe + 4 position delay

Interior Features

12V socket in luggage compartment
 3 rear headrests
 4 load lashing points in luggage compartment
 60/40 split folding rear seat backrest
 Auto fold down lever in rear seat backrest
 Bag hook in luggage compartment x 2
 Cooled glovebox
 Cupholder cover
 Dust/pollen filter
 Front and rear reading lights incorporating LED technology
 Front centre armrest with storage compartment and two rear air vents
 Front seat back storage pockets
 Grab handles front x 2, rear x 2 with integrated coat hooks
 Height and reach adjustable steering wheel
 Illuminated vanity mirrors
 Instrument lighting white adjustable panel illumination
 Interior light delay
 Isofix preparation for 2 rear child seats
 Load through provision with rear centre armrest and cupholders x2
 Luggage compartment lighting
 Overhead storage box
 Passenger underseat drawer
 Pearl grey headlining
 Storage box in luggage compartment
 Storage compartment in roof console with cover
 Storage compartments in centre console
 Storage compartments in front doors
 Storage compartments in rear doors
 Stowable luggage compartment cover
 Sun visors
 Variable boot floor, height adjustable and removable

Packs

Convenience Pack - Golf
 Light and Sight pack - Golf
 Mirror pack - Golf

Safety

3 rear three point seatbelts
 Airbags - Driver's and front passenger's, curtain airbag, Driver's knee, front side impact and passenger's airbag deactivation switch
 Anti-lock Braking System (ABS) with Hydraulic Brake Assist (HBA)
 Automatic post collision braking system
 Child locks on rear doors
 Driver/Passenger optimised head restraints
 Electronic parking brake with auto hold
 Electronic stability control (ESC) including Electronic differential lock (EDL) and ASR (Traction control) with deactivation via infotainment system
 Front ventilated disc brakes

and rear disc brakes
Pre crash preventive occupant protection
Three point height adjustable front seatbelts with tensioners
Tyre pressure loss indicator

Security
Alarm with interior protection and deactivation via infotainment system
Electronic engine immobiliser
Remote central locking with 2 remote folding keys

Technical
Battery regeneration during braking
Diesel particulate filter
XDS electronic differential lock

Trim
Brushed dark silver decorative inserts in dash and door panels
Chrome plated air vent surround
Chrome plated electric mirror adjustment light switch surround
Polar night black centre console

Wheels
Steel space saver spare wheel

Vehicle Features

'Lights On' warning buzzer, 3 rear headrests, 3 rear three point seatbelts, 4 load lashing points in luggage compartment, 12V socket in luggage compartment, 60/40 split folding rear seat backrest, ACC - Adaptive cruise control with front assist, Airbags - Driver's and front passenger's, Alarm with interior protection and deactivation via infotainment system, Anti-lock Braking System (ABS) with Hydraulic Brake Assist (HBA), Auto fold down lever in rear seat backrest, Automatic post collision braking system, Bag hook in luggage compartment x 2, Battery regeneration during braking, Black front air intake and radiator grille with chrome insert, Black rear diffuser, Bluetooth telephone and audio connection for compatible devices, Body colour bumpers, Body colour door handles, Body colour door mirrors with integrated indicators, Brake pad wear indicator warning light, Brushed dark silver decorative inserts in dash and door panels, Child locks on rear doors, Chrome plated air vent surround, Chrome plated electric mirror adjustment light switch surround, city emergency brake and speed limiter, Composition media system, Convenience Pack - Golf, Cooled glovebox, Cupholder cover, curtain airbag, DAB Digital radio receiver, Diesel particulate filter, distance monitoring, Driver's knee, Driver/Passenger optimised head restraints, Driver alert system, Driver Personalisation profile selection, Driver profile selection, Driving Mode Selection with four preset modes - Eco, Dusk sensor + automatic driving lights, Dust/pollen filter, Electrically adjustable and heated door mirrors, Electric front windows, Electric rear windows, Electronic engine immobiliser, electronic odometer, Electronic parking brake with auto hold, Electronic

stability control (ESC) including Electronic differential lock (EDL) and ASR (Traction control) with deactivation via infotainment system, exterior temperature and fuel gauge, Front and rear reading lights incorporating LED technology, Front centre armrest with storage compartment and two rear air vents, Front seat back storage pockets, front side impact and passenger's airbag deactivation switch, Front ventilated disc brakes and rear disc brakes, Fully galvanised body, Grab handles front x 2, Heated rear windscreen, height adjustable and removable, Height and reach adjustable steering wheel, Hidden exhaust pipe, High level 3rd brake light incorporating LED Technology, Illuminated vanity mirrors, Instrument cluster in white, Instrument lighting white adjustable panel illumination, Interior light delay, Isofix preparation for 2 rear child seats, LED daytime running lights, LED front fog lights with static cornering light function, Light and Sight pack - Golf, Load through provision with rear centre armrest and cupholders x2, Luggage compartment lighting, Mirror pack - Golf, Misfuelling protection device, MP3/WMA compatibility, Multi device interface (MDI) with USB connection, Multifunction computer with visual gear change recommendation for fuel consumption, normal, Overhead storage box, Passenger underseat drawer, Pearl grey headlining, Personalisation 1.1 profile for media, Polar night black centre console, Power assisted speed sensitive electro-mechanical steering, Pre crash preventive occupant protection, Premium USB cable in choice of either Apple or Android smartphone compatibility, Push tank flap, Rear fog lamp, Rear tinted glass 65% light absorbing from B pillar backwards, Rear window aerial, Rear window wash/wipe with intermittent wipe, rear x 2 with integrated coat hooks, Reflectors in all doors, Remote central locking with 2 remote folding keys, rev counter, SD card slot, service interval display, SMS Functionality, Speed limit display, Speedo, sport or individual modes, Steel space saver spare wheel, Stop/start system, Storage box in luggage compartment, Storage compartment in roof console with cover, Storage compartments in centre console, Storage compartments in front doors, Storage compartments in rear doors, Stowable luggage compartment cover, Sun visors, Tailgate with integrated rear roof spoiler, Three point height adjustable front seatbelts with tensioners, trip, Tyre pressure loss indicator, USB and SD card connectivity, Variable boot floor, Warning buzzer and light for front seatbelts unfastened, Windscreen wipers/ intermittent wipe + 4 position delay, XDS electronic differential lock