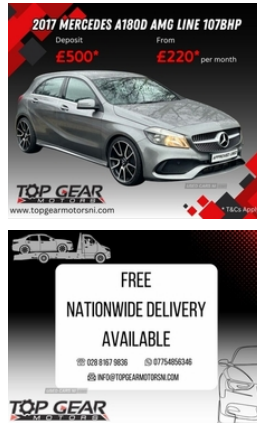


## Mercedes-Benz A-Class A180d AMG Line 5dr | Sep 2017

# £10,450

**\*REAR CAMERA, CRUISE CTRL, BLUETOOTH, HALF LEATHER, SAT NAV\***



2017 MERCEDES-BENZ A-CLASS A180D AMG LINE 1.5 107 BHP \*\* REAR CAMERA, CRUISE CONTROL, BLUETOOTH, HALF LEATHER, SAT NAV \*\* \*\* VRT €2,374 \*\* \*\* NOX €515 \*\* We can settle your existing finance! Part exchange / trade in of your vehicle accepted! £0 Deposit options available\*\* 6 Months Warranty Fully Serviced Fully Valeted \*\* WARRANTED MILES \*\* Spec Includes: Sat Nav Reverse Parking Camera Front Parking Aid Half Leather Air Con Bluetooth Cruise Control Speed Limiter Apple Car Play Android Auto Play Sports Seats AMG Body Styling Privacy Glass Ambient Lighting Electric Handbrake Driving Mode Selection LED Tail Lights Heated Door Mirrors Daytime Running Lights Multi-Function Steering Wheel Radio/CD Player Upgraded Alloys Optional Extra & More... \*\* CALL TODAY TO BOOK A TEST DRIVE \*\* Why buy from Top Gear Motors? Top Gear Motors are a small family owned business who have been established for over 27 Years! We take great pride in our work and value our customers and their experience. Part Exchange / Trade In of your Vehicle Accepted! We can settle your existing finance! 6/12/24/36 Months Upgraded Warranties Available Finance Packages Available Seen something you like but want it tailored to your taste? We offer full customisation packages for all our cars and commercial vehicles, such as body kits, alloy wheels, window tinting, and more! Contact us now for more information! 07754856346 02881679836 54 Learmore Rd, Killen, Castlederg, BT81 7SD 98A Doogary Rd, Omagh, BT79 0BN

### Vehicle Features

1/3 to 2/3 split folding rear seats, 3 rear 3 point seatbelts, 3

<b>Miles:</b>	84731
<b>Fuel Type:</b>	DIESEL
<b>Transmission:</b>	Manual
<b>Colour:</b>	Grey
<b>Engine Size:</b>	1461
<b>CO2 Emission:</b>	102
<b>Tax Band:</b>	Petrol/Diesel (£190 p/a)
<b>Body Style:</b>	Hatchback
<b>Insurance group:</b>	14E
<b>Reg:</b>	SG67HYN

### Technical Specs

#### DIMENSIONS

<b>Length:</b>	4299mm
<b>Width:</b>	1780mm
<b>Height:</b>	1433mm
<b>Seats:</b>	5
<b>Luggage Capacity (Seats Up):</b>	341L
<b>Gross Weight:</b>	1960KG
<b>Max. Loading Weight:</b>	565KG

#### PERFORMANCE & ECONOMY

<b>Fuel Consum. (Urban Cold):</b>	62.8MPG
<b>Fuel Consum. (Extra Urban):</b>	78.5MPG
<b>Fuel Consum. (Combined):</b>	72.4MPG
<b>Fuel Tank Capacity:</b>	50L
<b>Number Of Gears:</b>	6 SPEED
<b>Top Speed:</b>	118MPH
<b>Acceleration 0-100 km/h:</b>	11.3s
<b>Engine Power BHP:</b>	107.3BHP

Spoke sports multifunction flat bottomed leather steering wheel, 8" colour display screen, 12V socket, ABS with Brake Assist, Active bonnet, Adaptive brake lights, Adaptive brake system, Alarm system/interior protection/immobiliser, Ambient lighting, AMG body styling, AMG floor mats with red stitching, Anti-lock Braking System with Brake Assist, Artico man-made leather/Dinamica upholstery, Attention assist, Auto Mercedes-Benz child seat recognition sensor, Black headlining, Bluetooth interface for hands free telephone, Body colour bumpers, Body colour door handles, Body coloured bumpers, Body coloured door handles, Body coloured side skirt, Body colour side skirt, Brake calipers with Mercedes-Benz lettering + perforated brake discs, Brushed stainless steel sports pedals, Bulb failure indicator, Carbon effect trim, Child proof door locks, Chrome air vent surrounds, Collision prevention assist plus, Comfort, Comfort, Crash responsive emergency lighting, Daytime running lights, Diamond radiator grille with chrome pins and silver louvre + chrome insert, Drivers knee airbag, Dual stage Driver/Passenger Airbags, Dual zone automatic climate control, DYNAMIC SELECT with a choice of driving modes (ECO, DYNAMIC SELECT with a choice of driving modes (ECO, Electric adjustable heated door mirrors, Electric front windows, Electric rear windows, Electronic parking brake, ESP with ASR, External temperature gauge, Footwell lights, Front and rear reading lights, Front and rear seatbelt reminder, Front centre armrest with storage compartment, Front head airbags, Front head restraints, Front passenger seat occupancy sensor, Front side airbags, Front sport seats, Headlamp assist, Heated rear window with timer, Height/reach adjustable steering column, Height adjustable front seats, Hill start assist, Illuminated door sills, Illuminated glovebox, Illuminated storage compartment, Isofix rear child seat preparation, Keyless ignition, Leather gearshift, LED tail lights, Load securing rings in luggage compartment, Lowered suspension, Low fluid warning light, Luggage compartment cover, Media interface, Mercedes Audio 20 radio/single CD + telephone keypad, Rain sensor windscreen wipers, Rear head restraints, Rear wiper, Remote central locking, Reversing camera, Seat comfort pack - A Class, Service indicator (ASSYST PLUS), Smartphone integration with Apple CarPlay, Speed dependent sports steering system, Speedtronic cruise control, Sport, Sport, Sport+ and Individual), Sport+ and Individual), Storage compartment under load area floor, Sunvisors with illuminated vanity mirrors, Tirefit sealant with electric air pump, Trip computer, Twin front cupholders, Twin Trapezoidal tailpipes, Tyre pressure monitoring system, USB port, Warning triangle and first aid kit, Window airbags