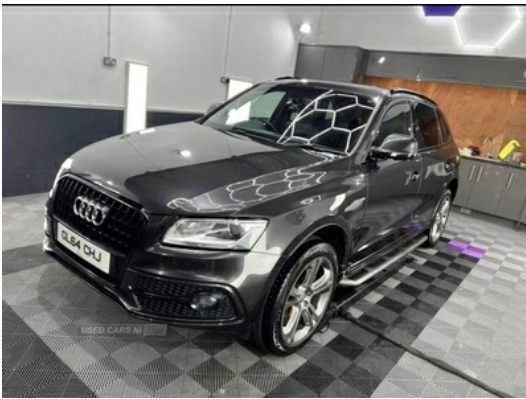


56 Yellow Road, Hilltown, BT34 5UD
Kevin Smith: 07742217905

Audi Q5 2.0 TDI Quattro S Line Plus 5dr | Feb 2015

£11,250

TIMING BELT CHANGED AT 77K



86,000 miles
Mot until May 2025
Timing belt changed at 77,000 miles
New brake pads on last week
Leather interior
Heated seats
Xenon headlights
2 keys
Great running car
Full service history
Selling due to upgrade

Vehicle Features

3 point seatbelts on all seats, 3 rear headrests, 3 zone climate control, ABS, Acoustic windscreen, Aluminium sill plates, Aluminium window surround, Audi music interface, Auto dimming rear view mirror, Body colour bumpers, Chrome door handles and boot strip, Chrome exhaust tailpipe, Chrome fog light surround, Concert radio/single CD player with MP3 facility, DAB Digital radio, Diesel particulate filter, Driver and passenger airbags, Driver and passenger side airbags, Driver information centre with colour display in instrument panel, Electrically adjustable and heated door mirrors, Electric park A - Transporter, Electromechanical parking brake, ESP, First aid kit, Front and rear electric windows, Front centre armrest with 12v socket, Front fog lights, Front passenger airbag deactivation,

Miles:	86000
Fuel Type:	Diesel
Transmission:	Manual
Colour:	Grey
Engine Size:	1968
CO2 Emission:	154
Tax Band:	G (£255 p/a)
Body Style:	Sport utility vehicle
Reg:	GI64chj

Technical Specs

DIMENSIONS	
Length:	4629mm
Width:	1898mm
Height:	Not Availablemm
Seats:	5
Luggage Capacity (Seats Up):	540L
Gross Weight:	2365KG
Max. Loading Weight:	610KG

PERFORMANCE & ECONOMY

Fuel Consum. (Urban Cold):	41.5MPG
Fuel Consum. (Extra Urban):	52.3MPG
Fuel Consum. (Combined):	47.9MPG
Fuel Tank Capacity:	75L
Number Of Gears:	6 SPEED
Top Speed:	127MPH
Acceleration 0-100 km/h:	9s
Engine Power BHP:	174.3BHP

Front sports seats including electric lumbar support, Headlight washers, Height adjustable driver's seat, High gloss black grille, Hill descent control, Isofix front passenger and rear seat preparation, Light and rain sensor for auto activation of lights and windscreen wipers, Locking wheel bolts, MMI - Multi Media Interface control system, Platinum grey rear diffuser, Privacy glass, Reach + rake adjustable steering column, Rear acoustic parking system, Rear spoiler, Rear wiper, Remote central locking, Remote electric boot opening/closing, Service interval indicator, Servotronic speed related PAS, S Line body styling, Split fold rear seat, Thatcham category 1 alarm + immobiliser, Towbar preparation, Traction control, Tyre pressure monitor, Tyre repair kit, Warning triangle, Xenon headlights with LED running lights