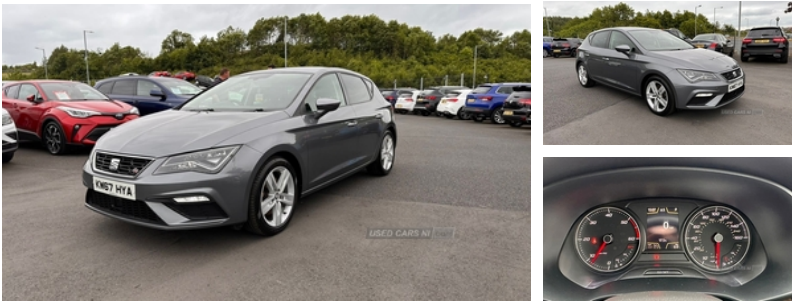


## Seat Leon 2.0 TDI 184 FR Technology 5dr DSG | 2018

# £11,750



### Vehicle Features

'Lights On' warning buzzer, 2 folding remote keys with window open/close function, 2 USB ports, 2 USB sockets in rear, 2 X SD card slot, 3 height adjustable rear headrests, 3 point rear seatbelts x3, 8" touch screen, 12v power point in centre console, 60/40 split folding rear seat, ABS + traction control, Active head restraints, Active pedestrian safety system, Additional heating and ventilation outlet in rear of centre console, Aluminium front door sills, Auxiliary input socket, Black grille with chrome surround, Bluetooth audio streaming, Bluetooth Handsfree Phone Connection, Body colour door handles, Body coloured bumpers, Body coloured door mirrors, Boot net, Child proof door locks, Chrome interior trim, Collision mitigation braking system, Curtain airbags, DAB Digital radio, Dark tinted rear windows, Driver/Front Passenger airbags, Driver/passenger sunvisors with illuminated vanity mirrors, Driver seat height adjust, Driver seat lumbar adjustment, Drivers knee airbag, Dual zone climate control, Dust/pollen filter, Electric adjustable/heated/folding door mirrors, Electric front/rear windows with one touch/anti pinch, Electric headlamp adjustment, Electronic parking brake with auto hold, Engine immobiliser, ESP+EBA, Front/rear floor mats, Front adjustable head restraints, Front armrest with storage box, Front assist including city emergency braking, Front cupholders x 2, Front seatback pockets, Front seatbelt pretensioners, Front Seatbelt warning, Front side airbags, Front sports seats, Height/reach adjust steering wheel, High gloss black finish B and C pillars, Hill hold control, Illuminated boot, Illuminated door sills, Illuminated glovebox, Illuminated rear centre console, Instrument lighting with brightness control, Leather handbrake, LED daytime running lights, LED front fog lights, LED Headlights, LED indicators in door mirrors, LED number plate light, LED tail lights, Locking wheel bolts, Low fuel warning light, Luggage tie-down hooks, Outside temperature gauge, Passenger airbag

<b>Miles:</b>	68000
<b>Fuel Type:</b>	Diesel
<b>Transmission:</b>	Semi-Automatic
<b>Colour:</b>	Grey
<b>Engine Size:</b>	1968
<b>CO2 Emission:</b>	120
<b>Tax Band:</b>	Petrol/Diesel (£190 p/a)
<b>Body Style:</b>	Hatchback
<b>Insurance group:</b>	23E
<b>Reg:</b>	KW67HYA

### Technical Specs

#### DIMENSIONS

<b>Length:</b>	4282mm
<b>Width:</b>	1816mm
<b>Height:</b>	1459mm
<b>Seats:</b>	5
<b>Luggage Capacity (Seats Up):</b>	380L
<b>Gross Weight:</b>	1900KG
<b>Max. Loading Weight:</b>	585KG

#### PERFORMANCE & ECONOMY

<b>Fuel Consum. (Urban Cold):</b>	52.3MPG
<b>Fuel Consum. (Extra Urban):</b>	67.3MPG
<b>Fuel Consum. (Combined):</b>	61.4MPG
<b>Fuel Tank Capacity:</b>	50L
<b>Number Of Gears:</b>	6 SPEED
<b>Top Speed:</b>	140MPH
<b>Acceleration 0-100 km/h:</b>	7.5s
<b>Engine Power BHP:</b>	181BHP

deactivation system, Passenger seat height adjuster, Passenger seat lumbar adjust, Perforated leather steering wheel with red stitching + gear knob, Radio/CD + MP3, Rear parking sensors, Rear top tether child seat ISOFIX attachment, Rear wash/wipe, Remote central locking + deadlocks, Remote fuel flap release, Reverse activated kerb-view adjustment on passenger's door mirror, SEAT Drive profile, SEAT logo boot release, Service interval indicator, Steering wheel gearshift paddles, Steering wheel mounted audio/phone controls, Storage boxes under front seats, Trip computer, Twin exhaust pipes, Tyre pressure monitoring system, Voice control system, Volumetric alarm with back up horn, XDS electronic differential lock