

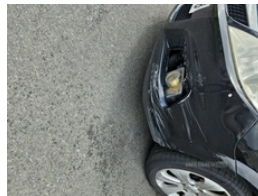
20, latt crescent, Newry, BT35 6QL
07521497704

Vauxhall Vectra 1.9 CDTi Exclusiv [150] 5dr | Nov 2007

BRAND NEW MOT

£1,259 O.N.O

7) Test Result: PASS
3) Expiry Date: 14 June 2025
9) Driver & Vehicle Agency
Examiner Signature:
Examiner ID: 291
9) Vehicle Make: VAUXHALL
Vehicle Model: VECTRA EXCLUSIV



Vauxhall ventral cities 150bhp.

Some signs of wear and tear, but drives like a dream. Shown in photos, Brand new mot

price cut

Vehicle Features

'Lights On' warning buzzer, 3 rear 3 point seatbelts, 4 grab handles, 4 speed fan, 12V Accessory socket, 60/40 asymmetric split folding rear seats, ABS/EBFD, Active front headrests, Air conditioning, Air recirculation system, Anti jam door design with burst proof door locks, Anti submarining ramps in seats, Auto correcting RDS time clock, Body colour bumpers, Body colour door mirrors, Body colour side and door mouldings, Brake assist function, Brake pad warning light, Carpeted loadspace, CBC - (Cornering brake control), Chrome front grille, Chrome interior door handles, Colour keyed carpet, Coolant temperature gauge, Courtesy lights, Cruise control, Deformation zones front and rear, Door to door illumination, Driver's seat height adjustment, Driver and passenger airbags, Driver and passenger side airbags, Driver and passenger sunvisors, Drivers seat with tilt and lumbar adjustment, Electric front windows + drivers one touch, Electric headlamp adjustment, Electric power steering, Electronic engine immobiliser, Electronic odometer and trip odometer, Energy

Miles:	160000
Fuel Type:	Diesel
Transmission:	Manual
Colour:	Black
Engine Size:	1910
Tax Band:	G (£255 p/a)
Body Style:	Saloon
Reg:	REZ3008

Technical Specs

DIMENSIONS

Length:	4611mm
Width:	1798mm
Height:	1460mm
Seats:	5

Luggage Capacity (Seats Up): 500L

Gross Weight:	2005KG
Max. Loading Weight:	577KG

PERFORMANCE & ECONOMY

Fuel Consum. (Urban Cold): 38.2MPG

Fuel Consum. (Extra Urban): 60.1MPG

Fuel Consum. (Combined): 49.6MPG

Fuel Tank Capacity: 61L

Number Of Gears: 6 SPEED

Top Speed: 135MPH

Acceleration 0-100 km/h: 9.8s

Engine Power BHP: 147.5BHP

USED CARS NI

absorbing steering column, Facia mounted document clip, Front/rear reading lights, Front and rear curtain airbags, Front centre armrest with storage compartment, Front door pockets, Front seatback pockets, Gas assisted bonnet struts, Gas assisted boot struts, Green tinted glass, Heated electric door mirrors, Heated rear window, Height adjustable rear head restraints, Height adjustable seatbelts, Hinged luggage cover, Ignition key in warning chime, Illuminated ashtray, Illuminated boot, Illuminated Driver/Pass vanity mirrors with cover, Illuminated glovebox, Instrument panel light dimmer, Integral protective side door padding, Intermittent rear wash/wipe, Isofix child seat attachment, Laminated windscreen, Load restraint lashing eyes, Load sill protection, Locking wheel bolts, Multi function display, Pedal release system, Pollen filter, Radio data system with traffic programme, Rake/reach adjustable steering wheel, Rear child proof door locks, Rear cupholders, Rear seat fold down centre armrest and load through facility, Reclining front seats, Reinforced passenger safety cell, Remote audio controls on steering wheel, Remote audio display, Remote central deadlocking, Rev counter, Roof mounted aerial, Scala cloth upholstery, Seat belt force limiter, Seatbelt pre-tensioners, Security code and remote display protection for audio equipment, Service interval indicator, Side impact beams, Side window demist vents, Space saver spare wheel, Third high level brake light, Twin jet windscreen washer nozzles, Tyre valve cap tool located behind fuel filler cap, Ultrasonic alarm