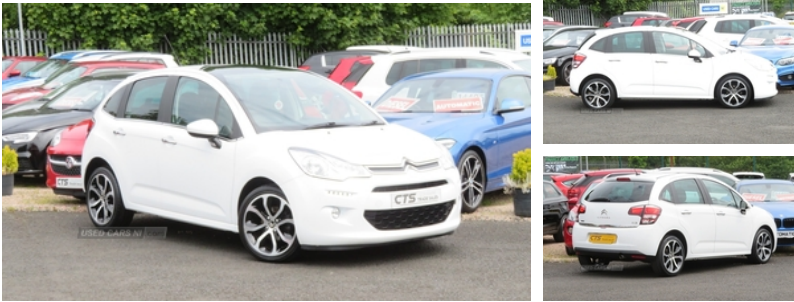


Citroen C3 1.6 BlueHDi 100 Platinum 5dr | Mar 2016

£5,375

**** FULL SERVICE HISTORY X9 STAMPS ** T BELT JUST CHANGED ****



C3 1.6 HDI PLATINUM 5 DOOR IN GLEAMING WHITE WITH ONLY 81389 MILES, POWER STEERING, 4 X ELECTRIC WINDOWS, REMOTE CENTRAL LOCKING WITH ALARM, ELECTRIC MIRRORS, DARK CLOTH UPHOLSTERY, CENTRAL ARMREST, PRIVACY GLASS, 2 KEYS, FULL SERVICE HISTORY X 9 STAMPS, JUST SERVICED WITH T BELT CHANGED, ALLOYS, FOGS, COLOUR CODED, PDC, GOOD CLEAN TIDY CAR, FINANCE AVAILABLE, WARRANTY PROVIDED, *** ALL MAJOR CREDIT AND DEBIT CARDS ACCEPTED ***

Vehicle Features

1/3 to 2/3 split folding rear seats, 3 point inertia reel seatbelts on all 5 seats, 4 speakers, 12V Accessory socket, ABS + EBD + EBA, Anti theft alarm, Automatic activation of hazard warning lights, Automatic boot locking, Automatic digital air conditioning, Automatic door locking, Auxiliary input socket, Bluetooth with USB Box, Body colour bumpers, Child lock indicator, Chrome bumper inserts, Chrome door handles, Chrome gear lever surround, Chrome side window trim, Chrome trim on tailgate, Cruise control + speed limiter, Curtain airbags, Diesel particulate filter, Driver and passenger airbags, Electric adjustable/heated/folding door mirrors, Electric child locks, Electric front/rear windows with one touch/anti pinch, ESP, Front + rear carpet mats, Front centre armrest with storage box, Front door pockets, Front fog lights, Front lateral airbags, Front passenger's airbag cut off device, Front reading lights, Front seatback pockets, Front seat belts warning, Gloss black lower dashboard, Height adjustable front headrests, Height adjustable front seats, Immobiliser, Interior mood lighting, Isofix system on

Miles:	81389
Fuel Type:	Diesel
Transmission:	Manual 5 speed
Colour:	White
Engine Size:	1560
CO2 Emission:	87
Tax Band:	A (£0 p/a)
Body Style:	Hatchback
Insurance group:	19E
Reg:	AX16TGV

Technical Specs

DIMENSIONS	
Length:	3941mm
Width:	1728mm
Height:	1538mm
Seats:	5
Luggage Capacity (Seats Up):	300L
Gross Weight:	1652KG
Max. Loading Weight:	567KG

PERFORMANCE & ECONOMY	
Fuel Consum. (Urban Cold):	74.3MPG
Fuel Consum. (Extra Urban):	88.3MPG
Fuel Consum. (Combined):	83.1MPG
Fuel Tank Capacity:	50L
Number Of Gears:	5 SPEED
Top Speed:	117MPH
Acceleration 0-100 km/h:	10.8s

outer rear seats, Laminated windscreen, Leather gear knob, Leather steering wheel, LED daytime running lights, Maintenance indicator, Multi function trip computer, Outside temperature display, Pyrotechnically pre-tensioned front seatbelts, RDS stereo radio + CD player/mp3 facility, Reach + rake adjustable steering column, Rear parking sensor, Rear wiper, Remote central locking + deadlocks, Scented air freshener, Space saver spare wheel, Steering wheel mounted audio controls, Three height adjustable rear head restraints, Tinted rear windows, Tyre pressure monitor, Variable PAS, Zenith panoramic windscreen

Engine Power BHP:	97.9BHP
--------------------------	---------