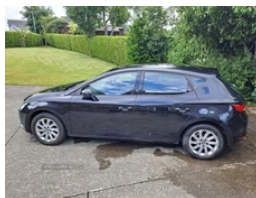


Seat Leon 1.6 TDI SE 5dr | Mar 2013

£4,500 O.N.O



Seat Leon 2013
Good Condition
Full service history
1.6 TDI
126k Miles
Timing belt and water pump done at 86k
MOT until October
£0 Road tax

Vehicle Features

'Lights On' warning buzzer, 3 height adjustable rear headrests, 3 point rear seatbelts x3, 12v power point in centre console, ABS + traction control, Active front headrests, Active head restraints, Additional heating and ventilation outlet in rear of centre console, Ambient lighting, Auxiliary input socket, Bluetooth audio streaming, Bluetooth handsfree phone connection with steering wheel mounted controls, Body colour door handles, Body coloured bumpers, Body coloured door mirrors, Boot storage net, Child proof door locks, Chromed centre radiator grille surround, Chrome interior trim, Comfort suspension, Coming home headlight function, Cornering front fog lights, Cruise control, Curtain airbags, Daytime running lights, Digital clock and outside temperature display, Driver/Front Passenger airbags, Driver/passenger sunvisors with illuminated vanity mirrors,

| | |
|----------------------|------------|
| Miles: | 126000 |
| Fuel Type: | Diesel |
| Transmission: | Manual |
| Colour: | Black |
| Engine Size: | 1598 |
| CO2 Emission: | 99 |
| Tax Band: | A (£0 p/a) |
| Body Style: | Hatchback |
| Reg: | KV13 YON |

Technical Specs

| DIMENSIONS | |
|-------------------------------------|--------|
| Length: | 4263mm |
| Width: | 1816mm |
| Height: | 1459mm |
| Seats: | 5 |
| Luggage Capacity (Seats Up): | 380L |
| Gross Weight: | 1820KG |
| Max. Loading Weight: | 609KG |

PERFORMANCE & ECONOMY

| | |
|------------------------------------|----------|
| Fuel Consum. (Urban Cold): | 61.4MPG |
| Fuel Consum. (Extra Urban): | 85.6MPG |
| Fuel Consum. (Combined): | 74.3MPG |
| Fuel Tank Capacity: | 50L |
| Number Of Gears: | 5 SPEED |
| Top Speed: | 119MPH |
| Acceleration 0-100 km/h: | 10.7s |
| Engine Power BHP: | 103.3BHP |

Driver seat height/lumbar adjust, Drivers knee airbag, Drivers seatbelt reminder, Dust/pollen filter, Electrically adjustable door mirrors, Electric front/rear windows with one touch/anti pinch, Electric headlamp adjustment, Engine immobiliser, ESP+EBA, Footwell illumination, Front adjustable head restraints, Front armrest with storage box, Front comfort seats, Front cupholders x 2, Front map reading lights, Front seatback pockets, Front seatbelt pretensioners, Front side airbags, Heated door mirrors, Height/reach adjust steering wheel, Hill hold control, Illuminated boot, Illuminated glovebox, Leather handbrake, Leather steering wheel and gear knob, LED indicators in door mirrors, Locking wheel bolts, Low fuel warning light, Luggage tie-down hooks, Multi function display, Passenger airbag deactivation system, Passenger seat height adjuster, Radio/CD + MP3, Rear reading lights, Rear top tether child seat ISOFIX attachment, Rear wash/wipe, Remote central locking + deadlocks, Remote fuel flap release, SD card slot, SEAT logo boot release, Second remote key, Service interval indicator, Speed sensitive power steering, Split folding rear seat, Steering wheel mounted audio/phone controls, Storage boxes under front seats, Tinted windows, Touch screen display, Trip computer, Tyre pressure monitoring system, USB port, Volumetric alarm with back up horn, XDS electronic differential lock