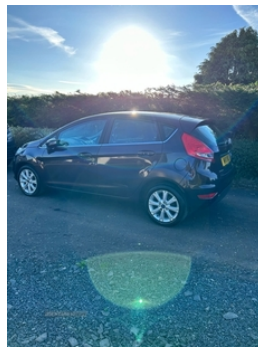


36 Kirk road, Ballymoney, BT53 6PP  
07935393131

## Ford Fiesta 1.25 Zetec 5dr [82] | Mar 2011 1 YR MOT

# £2,850



Great driving car. Manual. 89000 miles. Electric pack. Interior immaculate.

### Vehicle Features

2 Plip keys, 3 point rear seatbelts x3, 4 speakers, ABS+EBA, Air conditioning, Auxiliary input socket, Body colour bumpers with chrome inserts, Body colour door handles, Body colour electric adjustable heated door mirrors, Chrome grille, Cloth upholstery, Courtesy headlamp delay, Delay courtesy light function, Driver and passenger airbags, Driver seat back pocket, Electric front windows/one touch facility, Electric power steering, ESP + traction control, Front fog lights, Front headrests, Height adjustable driver's seat, Immobiliser, Isofix, Leather gear knob, Leather steering wheel, Map reading lights, MP3 compatible radio/single CD player, Outer passenger rear headrests, Passenger seat back pocket, Quickclear heated windscreen, Reach + rake adjustable steering column, Rear wiper, Remote central locking, Side airbag pack - Fiesta, Split folding rear seats, Steering wheel mounted controls, Trip computer

|                         |              |
|-------------------------|--------------|
| <b>Miles:</b>           | 89000        |
| <b>Fuel Type:</b>       | Petrol       |
| <b>Transmission:</b>    | Manual       |
| <b>Colour:</b>          | Pink/Purple  |
| <b>Engine Size:</b>     | 1242         |
| <b>CO2 Emission:</b>    | 129          |
| <b>Tax Band:</b>        | D (£160 p/a) |
| <b>Body Style:</b>      | Hatchback    |
| <b>Insurance group:</b> | 6E           |
| <b>Reg:</b>             | MV11NXU      |

### Technical Specs

#### DIMENSIONS

|                                     |        |
|-------------------------------------|--------|
| <b>Length:</b>                      | 3950mm |
| <b>Width:</b>                       | 1787mm |
| <b>Height:</b>                      | 1481mm |
| <b>Seats:</b>                       | 5      |
| <b>Luggage Capacity (Seats Up):</b> | 295L   |
| <b>Gross Weight:</b>                | 1495KG |
| <b>Max. Loading Weight:</b>         | 454KG  |

#### PERFORMANCE & ECONOMY

|                                    |         |
|------------------------------------|---------|
| <b>Fuel Consum. (Urban Cold):</b>  | 38.2MPG |
| <b>Fuel Consum. (Extra Urban):</b> | 62.8MPG |
| <b>Fuel Consum. (Combined):</b>    | 50.4MPG |
| <b>Fuel Tank Capacity:</b>         | 42L     |
| <b>Number Of Gears:</b>            | 5 SPEED |
| <b>Top Speed:</b>                  | 104MPH  |
| <b>Acceleration 0-100 km/h:</b>    | 13.3s   |
| <b>Engine Power BHP:</b>           | 80.5BHP |

