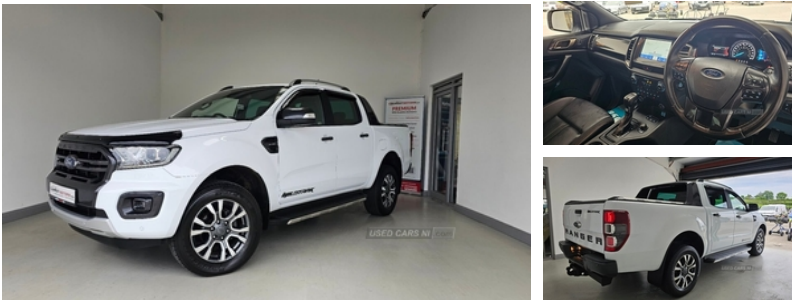


Ford Ranger Pick Up Double Cab Wildtrak 2.0 EcoBlue 213 Auto | Mar 2022

£25,995 + VAT



2 keys, Bluetooth phone and touchscreen media, Nav, Parking sensors, Heated front seats, Alloy wheels, Towbar, Rear privacy glass Viewing by appointment. View all our stock and apply for finance

Vehicle Features

'Lights On' Reminder warning buzzer, 2 bag hooks in luggage compartment, 2 cupholders, 2 key fob, 3 point height adj front seatbelts + pretensioners, 3 point inertia rear seatbelts, 3x3 point rear seatbelts, 4 grab handles, 12V socket with cover, ABS, Adjustable lumbar support, Air recirculation system, Air suspension, Anti-lock Braking System, Audio remote control, Automatic headlights, Black high gloss trim, Body coloured bumpers, Body coloured plastic front bumper, Body coloured side sills, Boulder grey exterior door handle, Boulder grey exterior door mirror, Boulder grey radiator grille, Centre console coolbox, Centre console storage, Chrome interior door handle, Cirrus cloth upholstery, Collision mitigation braking system, curtain airbag and driver knee airbag, Daytime running lights, Delay courtesy light function, Double angled driver's door mirror, Double locking power door lock with flip key, Driver/passenger sunvisors and vanity mirrors, Driver/Passenger whiplash optimised head restraints, Driver and front passenger airbag, Driver and passenger airbags, Driver seat back mounted map pocket, Driver seat height adjust, Dual control system - Electronic air temperature control (EATC), Dual power heated fold back door mirror with puddle lamp and signal, Dust/pollen filter, Ebony headliner, Electric front windows, Electric power assisted steering, Electronic engine immobiliser, Emergency brake assist, Engine start/stop system, ESP and roll over mitigation, ESP with EDL + ASR, Folding rear seatbacks, Front door pockets, Front head restraints, Front wash/wipe with interval delay, Full size spare wheel, Glovebox, HBA (Hydraulic

Miles:	25000
Fuel Type:	DIESEL
Transmission:	Automatic
Colour:	White
Engine Size:	1996
Tax Band:	Light goods vehicle (£335 p/a)
Body Style:	Pickup
Reg:	SK22THZ

Technical Specs

DIMENSIONS	
Length:	5359mm
Width:	2163mm
Height:	1848mm
Seats:	5
Luggage Capacity (Seats Up):	Not AvailableL
Gross Weight:	3270KG
PERFORMANCE & ECONOMY	
Fuel Consum. (Urban Cold):	38.7MPG
Fuel Consum. (Extra Urban):	62.8MPG
Fuel Consum. (Combined):	26.4MPG
Fuel Tank Capacity:	80L
Number Of Gears:	10 SPEED
Top Speed:	112MPH
Acceleration 0-100 km/h:	9s
Engine Power BHP:	210.1BHP

Brake Assist), Heated driver and passenger seat, Heated rear window with auto timer, Heated windshield and rear window, Heating/ventilation unit with 4 speed fan, Heat insulating tinted glass, High gloss black finish B pillar, High mounted stop lamp with cargo area light, ICE feature pack 129 - Ranger, Immobiliser, Instrument panel - Illumination control, Intelligent speed assistance, Interior light with delay, ISOFIX child safety seat attachment, Isofix Preparation 2 Rear child seats, Journey grain partial leather upholstery with Wildtrak logo, Leather gearknob, LED ambient interior lighting, LED Front fog lamp, LED projector headlamps, Load lip protective shield, Locking rear axle, Locking wheel nuts, Luggage compartment cover, Luggage compartment lighting, Moulded in colour tailgate handle, Multifunction computer - Midline, Note pad holder, Painted front fender grille, Passive anti theft system, Passive keyless entry and start system, pen holder and coin holder in glove box, Power adjustable 8 way driver seat, Power Assisted Steering - speed related, Power converter, Power tailgate lock, Premium front and rear floor mats with Wildtrak logo, Privacy glass, Rain sensitive windshield wipers, Reach adjustable steering column, Reach and rake adjustable steering column, Rear bumper chrome underbar, Rear bumper step in boulder grey, Rear centre console + storage compartment, Rear head restraints, Rear mudflaps, Rear seats fold flat, Rear windscreen washer and wiper with interval delay, Rear wipe auto when in reverse + front wipe on, Roof rails, Roof storage for driver sunglasses, Seatbelt reminders for driver and front passenger, Service interval indicator, side airbag, Spare wheel lock, Sport leather stitched steering wheel, Sports bar, Steering column rake adjustment, Tailgate - Easy-lift/lower mechanism, Thatcham category 1 alarm security system, Three spoke steering wheel, Tie down rails and rope hooks, Trip computer, Tyre pressure monitoring system, Tyre pressure sensors, Underbody protection, Under hood engine cover, Warning buzzer and light for front seatbelts unfastened, Wildtrak door trim panel insert