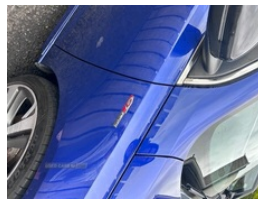


## Peugeot 308 1.6 BlueHDi 120 GT Line 5dr | Jan 2017

# £6,750 O.N.O



3D connected navigation  
 Bluetooth telephone facility  
 Exterior temperature indicator with ice warning  
 Front and rear parking sensors  
 Mirror screen with mirror link, apple carplay and andriod auto  
 Multi function trip computer  
 Peugeot connect SOS and assistance  
 PEUGEOT i-Cockpit with 9.7" capacitive touchscreen in centre console  
 Peugeot i-cockpit with compact multi-function steering wheel  
 Peugeot i-cockpit with head-up instrument panel  
 Service interval indicator  
 Visio Park 1 with 180 degree Colour reversing camera

### Vehicle Features

3x3 point rear seatbelts, 12V accessory power point in centre console, 18" Diamant alloy wheels, 60/40 split folding rear seat back and squab, ABS/EBFD/EBA, Adjustable front centre armrest, Aluminium effect door sills, Aluminium pedals, Automatic front rain sensing wipers, Automatic headlights, Black rear diffuser, Body coloured bumpers, Colour coded door handles, Colour satellite navigation, DAB Digital radio, Dark tinted rear windows, Deadlocks, Driver SMART airbag, Dual zone automatic air conditioning, Electric adjustable door mirrors, Electric folding door mirrors with courtesy approach lighting, Electric front windows/one touch facility, Electric rear windows, Electrochrome rear view mirror, Electronic parking brake, ESP with Hill Assist, Follow me home headlights, Front and rear curtain airbags, Front

<b>Miles:</b>	92307
<b>Fuel Type:</b>	Diesel
<b>Transmission:</b>	Manual
<b>Colour:</b>	Blue
<b>Engine Size:</b>	1560
<b>CO2 Emission:</b>	98
<b>Tax Band:</b>	A (£0 p/a)
<b>Body Style:</b>	Hatchback
<b>Insurance group:</b>	22E
<b>Reg:</b>	KE66EXV

### Technical Specs

DIMENSIONS	
<b>Length:</b>	4253mm
<b>Width:</b>	1804mm
<b>Height:</b>	1457mm
<b>Seats:</b>	5
<b>Luggage Capacity (Seats Up):</b>	501L
<b>Gross Weight:</b>	1805KG
<b>Max. Loading Weight:</b>	620KG

PERFORMANCE & ECONOMY	
<b>Fuel Consum. (Urban Cold):</b>	64.2MPG
<b>Fuel Consum. (Extra Urban):</b>	83.1MPG
<b>Fuel Consum. (Combined):</b>	74.3MPG
<b>Fuel Tank Capacity:</b>	53L
<b>Number Of Gears:</b>	6 SPEED
<b>Top Speed:</b>	117MPH
<b>Acceleration 0-100 km/h:</b>	10.3s
<b>Engine Power BHP:</b>	118BHP

headrests, Front parking sensors, Front passenger SMART airbag with deactivate switch, Front seat back map pockets, Front side airbags, GT carpet mats, Height/reach adjust steering wheel, Height adjustable passenger seat, High gloss black door mirrors, Intermittent rear wash/wipe, Isofix on 2nd row rear seats, Leather gearshift, Leather steering wheel with red stitching, LED daytime running lights, LED front fog lights, LED Headlights, LED indicators in door mirrors, LED rear lights, Locking wheel bolts, PAS, Peugeot connect with USB and bluetooth, Rear headrests, Rear parking sensor, Remote control central locking, Reversing camera, Rolling code transponder immobiliser, Service interval indicator, Steering column mounted multifunction controls, Thatcham cat 1 ultrasonic alarm, Tinted rear windscreen, Touch screen display, Trip computer, Twin exhaust tailpipe