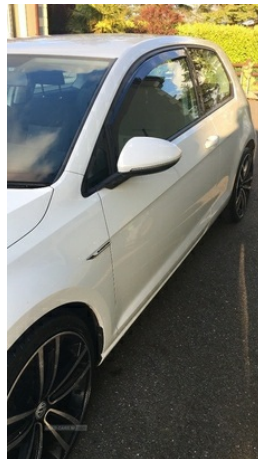


**Volkswagen Golf 1.6 TDI 110 BlueMotion 3dr**  
**| Oct 2014**

**£4,750** O.N.O



<b>Miles:</b>	116500
<b>Fuel Type:</b>	Diesel
<b>Transmission:</b>	Manual
<b>Colour:</b>	White
<b>Engine Size:</b>	1598
<b>CO2 Emission:</b>	85
<b>Tax Band:</b>	A (£0 p/a)
<b>Body Style:</b>	Hatchback
<b>Reg:</b>	VN64EWX

**Technical Specs**

DIMENSIONS	
<b>Length:</b>	4255mm
<b>Width:</b>	1799mm
<b>Height:</b>	1452mm
<b>Seats:</b>	5
<b>Luggage Capacity (Seats Up):</b>	380L
<b>Gross Weight:</b>	1740KG
<b>Max. Loading Weight:</b>	535KG

PERFORMANCE & ECONOMY	
<b>Fuel Consum. (Urban Cold):</b>	74.3MPG
<b>Fuel Consum. (Extra Urban):</b>	94.2MPG
<b>Fuel Consum. (Combined):</b>	88.3MPG
<b>Fuel Tank Capacity:</b>	50L
<b>Number Of Gears:</b>	6 SPEED
<b>Top Speed:</b>	124MPH
<b>Acceleration 0-100 km/h:</b>	10.5s
<b>Engine Power BHP:</b>	110BHP

2014 golf 1.6 TDI , 3 door, very good condition, 116500 miles, 1 years MOT , got full service and valet , free tax , 19 inch alloys

**Vehicle Features**

'Lights On' warning buzzer, 3 point height adj front seatbelts + pretensioners, 3 rear 3 point seatbelts, 3 rear headrests, 3 spoke steering wheel, 5.8" colour touch screen, 8 speakers, 60/40 split folding rear seat, ABS, aux-in, Bag hook in luggage compartment, Blue stripe on radiator grille, Bluetooth Telephone preparation, Body colour bumpers, Body colour door handles, Body colour door mirrors with integral indicators, Boot lashing points, Brake pad wear indicator warning light, CD/MP3/WMA, Centre console storage box, Chrome air vent surrounds, cooled glovebox, Courtesy light delay, DAB Digital radio, Dark rhodium decorative inserts in dash, Daytime running lights, Diesel particulate filter, Door open warning reflectors, Driver/Front Passenger airbags, Driver/front passenger seat height



adjustment, Driver/Passenger whiplash optimised head restraints, Drivers knee airbag, Dust/pollen filter, Easy entry slide seats (access to rear seats), Electrically adjustable and heated door mirrors, Electric front windows, Electronic engine immobiliser, Electronic parking brake with auto hold, Electronic tyre pressure monitoring, ESP with EDL + ASR, Exterior temperature gauge, Flat tyre indicator, Front and rear curtain airbags, Front centre armrest with storage box and rear air vents, Front passenger airbag deactivation, Front reading lights, Front side airbags, Fuel cut off safety device, Grab handles, Green tinted heat insulating glass, HBA (Hydraulic Brake Assist), Heated rear windscreen, Height/reach adjust steering wheel, height adjustable and removable, illuminated, Illuminated vanity mirrors, Instrument cluster in white, Isofix preparation for 2 rear child seats, Lockable, Lowered sports suspension, Luggage compartment cover, Luggage compartment lighting, MDI with USB/iPod connection cables, Multifunction computer, PAS - speed related, Range adjustable headlights, Rear cupholder, Rear diffuser, Rear roof spoiler, Rear windscreen washer and wiper with interval delay, Remote central locking with 2 remote folding keys, Rev counter, Salt cloth upholstery, Storage compartments in doors, Trip and service interval display, Tyre repair kit, USB and SD card reader, Variable boot floor, Warning buzzer and light for front seatbelts unfastened, Warning triangle and first aid kit holder, White adjustable panel illumination, Windscreen wipers/ intermittent wipe + 4 position delay