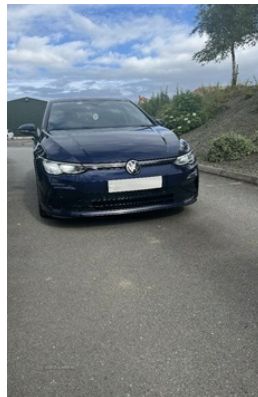


Volkswagen Golf 2.0 TDI 150 R-Line 5dr DSG | Sep 2021

£20,450

LOW MILES- FVWSH- GREAT SPEC- 2KEYS



Volkswagen Golf 2.0 TDI 150 R-Line DSG

- Immaculate condition interior & exterior
- Full VW Service History
- Spare Key included
- Under warranty until Sep 2024
- Fully spec'd such as Adaptive Cruise Control, Discover Navigation, Keyless Entry, App-Connect/Apple CarPlay, Front and Rear Parking Sensors, Lane assist, Front and rear electric windows, front & rear parking sensors, R Line Body Styling, LED lights, wireless phone charging to name a few

Phonecalls only

Vehicle Features

3 point height adj front seatbelts + pretensioners, 3 rear head restraints, 3 rear three point seatbelts, 12V socket in front centre console, 12V socket in luggage compartment, ABS, Adaptive cruise control ACC with speed limiter and front assist (reacting to vehicles, Alarm with interior protection and

Miles:	37400
Fuel Type:	Diesel
Transmission:	Automatic/Other
Colour:	Blue
Engine Size:	1968
Tax Band:	Petrol/Diesel (£190 p/a)
Body Style:	Hatchback
Reg:	dl07lag

Technical Specs

DIMENSIONS	
Length:	4284mm
Width:	1789mm
Height:	1491mm
Seats:	5
Luggage Capacity (Seats Up):	380L
Gross Weight:	1960KG
Max. Loading Weight:	577KG

PERFORMANCE & ECONOMY	
Fuel Consum. (Combined):	61.4MPG
Fuel Tank Capacity:	50L
Number Of Gears:	7 SPEED
Top Speed:	139MPH
Acceleration 0-100 km/h:	8.4s
Engine Power BHP:	147.5BHP

deactivation via infotainment system, Ambient lighting, Ambient lighting - Customisable 30 colour ambient lighting, Auto dimming rear view mirror, Automatic headlamp activation with Coming home and Leaving home feature, Black roof lining, Body colour door handles, Body colour door mirrors with integrated indicators, Body colour rear roof spoiler, Brushed stainless steel pedals, Car2X communication, Carbon grey decorative inserts in dash and front door trim panels, Centre console, Chrome plated surround to electric mirror button, Diesel particulate filter, Digital cockpit pro - 10.25" high resolution TFT dash display screen with customizable menus and information, Driver alert system, Driver and front passenger airbag with front passenger airbag deactivation, Driver profile selection, Drivers and front passengers safety optimised head restraints, Drivers and front passengers sun visors with vanity mirrors, Dynamic road sign display, eCall - Emergency call service for SOS calls to emergency response, Electrically heated and adjustable door mirrors with memory feature, Electronic engine immobiliser, electronic odometer, Electronic parking brake with auto hold, ESC (Electronic Stability Control), Extended pedestrian protection measures, exterior illuminated styling elements at the sides, exterior temperature and fuel gauge, Front + rear carpet mats, Front and rear electric windows, Front and rear passengers curtain airbag system including front side airbags, Front centre armrest with storage compartment, Front cupholders x 2, Front disc brakes, Front reading lights x 2 incorporating LED technology, Front seat lumbar support adjuster, Front sports seats, Glovebox, Heated rear windscreen, Heat insulating glass windscreen, Height adjustable front seats, Height and reach adjustable steering wheel, High level 3rd brake light, Highway light, Isofix child seat preparation for 2 rear child seats and front passenger seat, Lane assist, LED License plate illumination, Luggage compartment lighting, Mobile phone interface with wireless inductive charging function, pedestrians and cyclists), Premium USB cable in choice of either Apple or Android smartphone compatibility, Progressive steering, R-Line leather wrapped multi function sports heated steering wheel, Rain sensor, Rear disc brakes, Rear fog light on one side and reversing lights on both sides, Rear lights incorporating LED technology, Rear tinted glass 65% light absorbing from B pillar backwards, Rear windscreen washer and wiper with interval delay, Removable luggage compartment cover, rev counter, R Line body coloured bumpers, R Line door and side trim panel, R Line front seats integrated head restraints, Sardegna cloth upholstery with front and outer rear seats Art Velour inner sides of bolsters, service interval display, Soul dashboard, Speedo, Split folding backrest with centre armrest and unsplit rear seat bench, Start/Stop function, trip, Two tone horn, Tyre pressure

monitoring system, Warning buzzer and light for front seatbelts unfastened, Welcome light, window switch and air vent surrounds, Wireless app connect, Woven fabric storage compartments in front and rear doors, XDS electronic differential lock for improved traction and handling