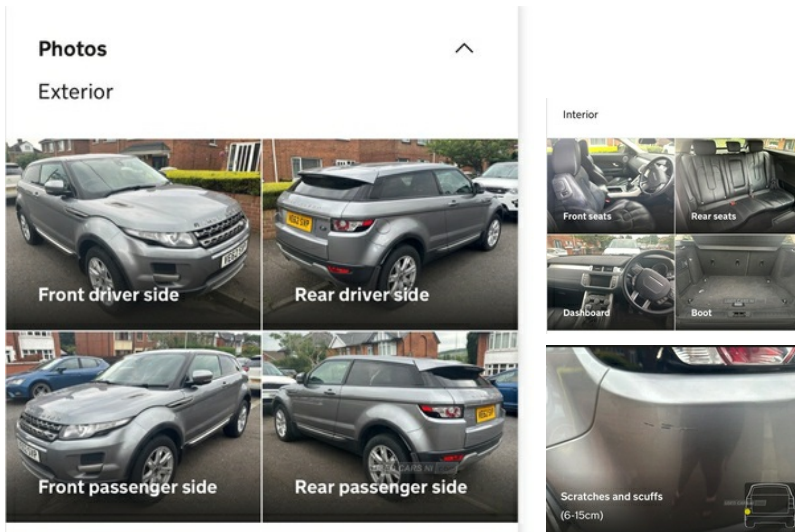


Land Rover Range Rover Evoque 2.2 SD4 Pure 3dr | Jan 2013

£7,800 O.N.O

LOW MILEAGE; COUPE



Low mileage 43232 no longer driving as have new car. Open to offers.

Full leather interior, partial stamped service history. Full years MOT due July 2025

Vehicle Features

12V power point front, 12V power point in luggage area, 60/40 split folding rear seat, ABS, Alarm, Audio Connectivity System, Auto climate control with air filtration, Auxiliary Audio Jack, Auxiliary heater, Bluetooth telephone connectivity, Body coloured bumpers, Centre console storage with lid, Cruise control, DAB Digital radio, Dark atlas tailgate finish, Diesel particulate filter, Driver/passenger sunvisors and illuminated vanity mirrors, Driver and passenger airbags, Drivers knee airbag, Electronic parking brake, EPAS, Footwell illumination, Front centre armrest, Front head restraints, Front seatbelt pretensioners with force limiters, Front side airbags with curtain airbags, Heated front seats, Heated rear windscreen, Height/reach adjustable steering column, Hill descent control, Hill start assist, Illuminated glovebox, Immobiliser, Interior mood lighting, Isofix child seat preparation, Lashing points, Leather gear knob, Leather steering wheel, Leather upholstery, Locking wheel nuts, Luggage compartment lighting, Luggage cover, Power front/rear windows with global close, Proximity sensing and touch detection for overhead map lights, Push button starter, Rear headrests, Rear parking aid, Rear spoiler, Rear

Miles:	42323
Fuel Type:	Diesel
Transmission:	Manual
Colour:	Grey
Engine Size:	2179
CO2 Emission:	149
Tax Band:	F (£210 p/a)
Body Style:	Sport utility vehicle
Reg:	VE62SVP

Technical Specs

DIMENSIONS	
Length:	4355mm
Width:	1900mm
Height:	1605mm
Seats:	4
Luggage Capacity (Seats Up):	550L
Gross Weight:	2350KG
Max. Loading Weight:	680KG

PERFORMANCE & ECONOMY	
Fuel Consum. (Urban Cold):	42.2MPG
Fuel Consum. (Extra Urban):	54.3MPG
Fuel Consum. (Combined):	49.6MPG
Fuel Tank Capacity:	60L
Number Of Gears:	6 SPEED
Top Speed:	124MPH
Engine Power BHP:	187.7BHP

wiper, Remote central locking, Roll stability control, Satin brushed aluminium inserts, Seatbelt warning, Service interval indicator, Steering wheel mounted audio/cruise controls, Terrain Response, Traction control, Trip computer, USB connection