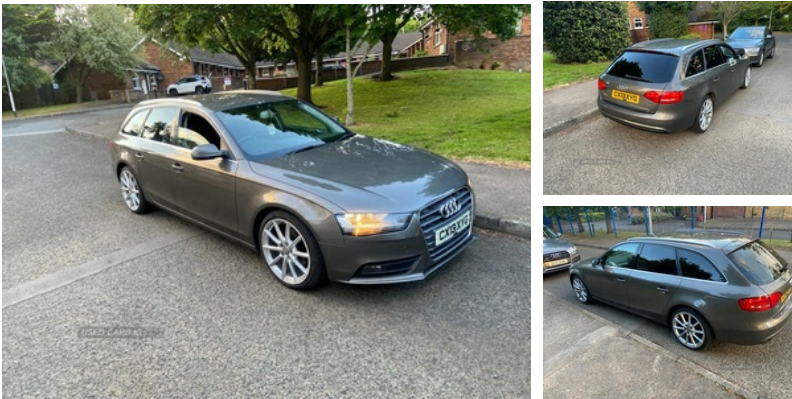


Audi A4 2.0 TDIe SE 5dr | May 2013**£4,250**

2013 2lt 143bhp
 Electric windows
 Electric mirrors
 Alloy wheels
 2 keys
 Full service history
 6 months mot
 Detachable tow bar
 Lovely example

Vehicle Features

3 point rear seatbelts x3, 3 zone climate control, ABS/EBD, Acoustic windscreen, Adaptive driver and front passenger airbags, Aluminium door sill trims, Auto dimming rear view mirror, Automatic headlights + automatic windscreen wipers, Body colour bumpers, Body colour door handles, Body colour door mirrors, Cruise control, DAB digital radio module, Daytime running lights, Driver's seat height adjustment, Driver information centre with colour display in instrument panel, Electric front windows, Electric heated door mirrors, Electric rear windows, Electro-mechanical PAS, Electromechanical parking brake, ESP, Exterior aluminium pack - A4, First aid kit, Front and rear headrests, Front centre armrest with 12v socket, Front fog lights, Front seatbelt pretensioners + load limiters, Front side airbags, Headlight range control, Intelligent Key, Interior chrome pack - A4, Isofix child seat preparation for front passenger/outer rear seats inc passenger airbag deactivation, Locking wheel bolts, Power boot opening and closing, Reach + rake adjustable steering column, Rear armrest, Rear wiper, Remote central locking, Roof rails, Service interval indicator, Space saver spare wheel, Split folding rear seats, Sports suspension, Thatcham category 1 alarm + immobiliser, Tool kit, Traction control, Warning triangle

Miles:	131000
Fuel Type:	Diesel
Transmission:	Manual
Colour:	Grey
Engine Size:	1968
CO2 Emission:	116
Tax Band:	C (£35 p/a)
Body Style:	Estate
Insurance group:	23E
Reg:	Cx13xyg

Technical Specs**DIMENSIONS**

Length:	4699mm
Width:	1826mm
Height:	1436mm
Seats:	5
Luggage Capacity (Seats Up):	490L
Gross Weight:	2105KG
Max. Loading Weight:	570KG

PERFORMANCE & ECONOMY

Fuel Consum. (Urban Cold):	53.3MPG
Fuel Consum. (Extra Urban):	72.4MPG
Fuel Consum. (Combined):	64.2MPG
Fuel Tank Capacity:	63L
Number Of Gears:	6 SPEED
Top Speed:	129MPH
Acceleration 0-100 km/h:	9.6s
Engine Power BHP:	134.1BHP

