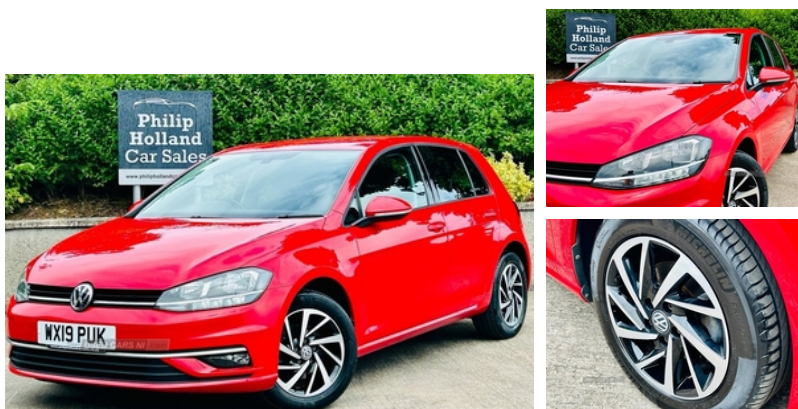


**Volkswagen Golf 1.6 TDI Match 5dr | Mar 2019**  
**OPTICAL PARKING DISPLAY**

**£13,995**



Philip Holland Cars. Family business selling a large selection of quality used cars in Ballyclare since 2003. All our cars are prepared to a high standard, HPI checked, fully inspected, serviced and MOT'd as required. Every car comes with a comprehensive warranty as standard. Trade-ins and competitive finance options are available

**Vehicle Features**

'Lights On' warning buzzer, 3 rear headrests, 3 rear three point seatbelts, 4 load lashing points in luggage compartment, 12V Socket - Luggage Compartment, 12V socket in luggage compartment, 16in Alloy Wheels - Woodstock, 60/40 split folding rear seat backrest, ACC - Adaptive cruise control with front assist, Adaptive Cruise Control, Airbags, Airbags - Driver's and front passenger's, Air Conditioning - Manual, Alarm with Interior Protection, Alarm with interior protection and deactivation via infotainment system, Anti-lock Braking System (ABS) with Hydraulic Brake Assist (HBA), Anti-lock Braking System - Anti-Lock Braking System with HBA - Hydraulic Brake Assist, Auto fold down lever in rear seat backrest, Automatic Coming-Leaving Home Lighting Function, Automatic Post-Collision Braking System, Automatic post collision braking system, Bag hook in luggage compartment x 2, Bag Hooks in the Luggage Compartment x2, Battery regeneration during braking, Black front air intake and radiator grille with chrome insert, Black Front Air Intake and Radiator Grille with Chrome Trimmed Inserts, Black rear diffuser, Bluetooth telephone and audio connection for compatible devices, Body-Coloured Door Mirrors with Integrated Indicators, Body colour bumpers, Body colour door handles, Body colour door mirrors with integrated indicators, Body

<b>Miles:</b>	40000
<b>Fuel Type:</b>	DIESEL
<b>Transmission:</b>	Manual
<b>Colour:</b>	Red
<b>Engine Size:</b>	1598
<b>CO2 Emission:</b>	108
<b>Tax Band:</b>	Petrol/Diesel (£190 p/a)
<b>Body Style:</b>	Hatchback
<b>Insurance group:</b>	13E
<b>Reg:</b>	WX19PUK

**Technical Specs**

DIMENSIONS	
<b>Length:</b>	4258mm
<b>Width:</b>	1799mm
<b>Height:</b>	1492mm
<b>Seats:</b>	5
<b>Luggage Capacity (Seats Up):</b>	380L
<b>Gross Weight:</b>	1800KG
<b>Max. Loading Weight:</b>	499KG

PERFORMANCE & ECONOMY	
<b>Fuel Consum. (Urban Cold):</b>	60.1MPG
<b>Fuel Consum. (Extra Urban):</b>	74.3MPG
<b>Fuel Consum. (Combined):</b>	68.9MPG
<b>Fuel Tank Capacity:</b>	50L
<b>Number Of Gears:</b>	5 SPEED
<b>Top Speed:</b>	123MPH
<b>Acceleration 0-100 km/h:</b>	10.2s

Coloured Bumpers, Body Coloured Door Handles, Brake Pad Wear Indicator, Brake pad wear indicator warning light, Brushed dark silver decorative inserts in dash and door panels, Car-Net App Connect, Child locks on rear doors, Child Security Locks in the Rear Doors, Chrome-Plated Light Switch Surround, Chrome plated air vent surround, Chrome Plated Air Vent Surrounds, Chrome plated electric mirror adjustment light switch surround, city emergency brake and speed limiter, Composition media system, Convenience Pack, Convenience Pack - Golf, Cooled glovebox, Cover for Storage Compartment in Centre Console, Cupholder cover, Cup Holders - Front x2, curtain airbag, DAB Digital radio receiver, Diesel particulate filter, Discover Navigation Touch-Screen Navigation-Radio System with Car-Net Guide and Inform, distance monitoring, Driver's knee, Driver/Passenger optimised head restraints, Driver alert system, Driver Personalisation Profile, Driver Personalisation profile selection, Driver profile selection, Drivers and Passengers Safety Optimised Head Restraints, Driving Mode Selection, Driving Mode Selection with four preset modes - Eco, Dusk sensor + automatic driving lights, Dusk Sensor - Automatic Driving Lights, Dust/pollen filter, Dust and Pollen Filter, Electrically adjustable and heated door mirrors, Electric front windows, Electric rear windows, Electric Windows - Front and Rear, Electronic engine immobiliser, electronic odometer, Electronic parking brake with auto hold, Electronic Parking Brake with Auto Hold Function, Electronic stability control (ESC) including Electronic differential lock (EDL) and ASR (Traction control) with deactivation via infotainment system, ESC - Electronic Stability Control including EDL - Electronic Differential Lock and ASR - Traction Control with Deactivation via Infotainment System, exterior temperature and fuel gauge, Front and rear reading lights incorporating LED technology, Front Assist, Front centre armrest with storage compartment and two rear air vents, Front Comfort Seats with Height and Lumbar Adjustment, Front Fog Lights - LED, Front seat back storage pockets, front side impact and passenger's airbag deactivation switch, Front ventilated disc brakes and rear disc brakes, Fully galvanised body, Galvanised Body, Glovebox - Cooled, Grab Handles - Front x2 Rear x2 with Coat Hooks, Grab handles front x 2, Halogen Clear Headlights - Range Adjustable - LED Daytime Running Lights, Headlining - Pearl Grey, Heated rear windscreen, Height-Adjustable Front Three-Point Seat Belts with Tensioners, height adjustable and removable, Height and reach adjustable steering wheel, Hidden exhaust pipe, High level 3rd brake light incorporating LED Technology, Illuminated vanity mirrors, Instrument cluster in white, Instrument Lighting - White Adjustable Panel Illumination, Instrument lighting white adjustable panel illumination, Interior light delay, ISOFIX Child Seat Preparation for 2 Rear Seats, Isofix preparation for 2 rear

**Engine Power BHP:**

114BHP

child seats, LED daytime running lights, LED front fog lights with static cornering light function, Light and Sight pack - Golf, Lights on Warning Buzzer, Load-Through Provision, Load Lashing Points x4 in Luggage Compartment, Load through provision with rear centre armrest and cupholders x2, Luggage Compartment Cover - Stowable, Luggage Compartment Light, Luggage compartment lighting, Luggage Compartment Storage Area on Left and Right, Lumbar Support for Drivers and Front Passenger Seat, Mirror Pack, Mirror pack - Golf, Misfuelling protection device, Misfuel Prevention Device, MP3/WMA compatibility, Multi device interface (MDI) with USB connection, Multifunction Computer, Multifunction computer with visual gear change recommendation for fuel consumption, normal, Overhead storage box, Parking Sensors - Front and Rear, Passenger underseat drawer, Pearl grey headlining, Personalisation 1.1 profile for media, Polar night black centre console, Polar Night Black Decorative Inserts in Centre Console, Power assisted speed sensitive electro-mechanical steering, Power Assisted Steering - Speed-Sensitive - Electro-Mechanical Steering Rack, Pre-Crash Preventive Occupant Protection, Pre crash preventive occupant protection, Predictive Pedestrian Protection, Premium USB Cable, Premium USB cable in choice of either Apple or Android smartphone compatibility, Push tank flap, Rain Sensor and Automatic Dimming Rear-View Mirror, Reading Lights - Front x2 and Rear x2, Rear Centre Armrest - Folding with Cup Holders x2, Rear Diffuser - Black, Rear fog lamp, Rear Lights Incorporating LED Technology, Rear Number Plate Lights Incorporating LED Technology, Rear Screen Wash-Wipe with Intermittent Wipe, Rear Tinted Glass - B Pillar Backwards - Approx 65 Percent Tinted, Rear tinted glass 65% light absorbing from B pillar backwards, Rear window aerial, Rear window wash/wipe with intermittent wipe, rear x 2 with integrated coat hooks, Reflectors in all doors, Reflectors in Doors, Remote central locking with 2 remote folding keys, Remote Electrically Foldable Door Mirrors - Door Mirror Puddle Lights and Reverse Activated Kerb-View Adjustment on Passengers Door Mirrors, rev counter, SD card slot, service interval display, SMS Functionality, Speed limit display, Speedo, Speedo and Rev Counter - Electronic Odometer - Trip - Service Interval Display - Exterior Temperature Gauge and Fuel Gauge, Split Folding Rear Backrests 60-40, sport or individual modes, Steel space saver spare wheel, Steering Column - Height and Reach Adjustable, Steering Wheel - Multifunction - Leather Trimmed, Stop/start system, Storage box in luggage compartment, Storage Compartment in Centre Console, Storage Compartment in Front Doors, Storage Compartment in Rear Doors, Storage compartment in roof console with cover, Storage compartments in centre console, Storage compartments in front doors, Storage compartments in

rear doors, Stowable luggage compartment cover, Sun visors, Tailgate with integrated rear roof spoiler, Three point height adjustable front seatbelts with tensioners, Three Rear 3-Point Seat Belts, Three Rear Head Restraints, trip, Tyre pressure loss indicator, USB and SD card connectivity, Vanity Mirrors - Illuminated, Variable boot floor, Variable Boot Floor - Height Adjustable and Removable, Warning Buzzer and Light for Front Seat Belts if Unfastened, Warning buzzer and light for front seatbelts unfastened, Windscreen wipers/ intermittent wipe + 4 position delay, Windscreen Wiper with Intermittent Wipe and 4 Position Delay, XDS electronic differential lock, XDS Electronic Differential Lock for Improved Traction and Handling