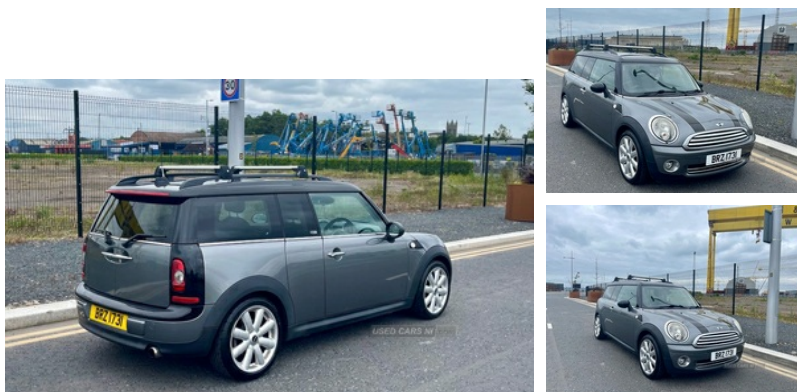


MINI Clubman 1.6 Cooper Graphite [122] 5dr | May 2010 12 MONTHS MOT

£2,695 O.N.O



MINI COOPER GRAPHITE ENGINE 1.6 PETROYEAR 2010HALF LEATHER INTERIOR AIR CONDITIONING ALLOY WHEELSREMOTE CENTRAL LOCKING12 MONTHS MOTFULLY VALETEDEXTENSIVE SERVICE HISTORY 4 NEW TYRES FOR MOT This vehicle comes with 12 months mot and has been serviced prior to sale. Timing belt replacement at 140kClutch replacement at 125kTest drive welcome!

Vehicle Features

3 point automatic seatbelts, 3rd sun visor on driver side, 4 lashing points to secure luggage, 12V power point front, 50/50 split folding rear seats, ABS, Active carbon filter, Automatic Stability Control (ASC), Auxiliary input socket, Body coloured bumpers, CBC - (Cornering brake control), Centre console storage box, Chrome door handles, Chrome headlight surround, Chrome interior door handles, Crash Sensor - activates hazard/interior lighting + unlocks doors, Drive away door locking, Driver's seat height adjuster, Driver/passenger sunvisors and vanity mirrors, Driver and passenger airbags, Driver and passenger side airbags, DSC - Dynamic Stability Control, Easy entry seats, Electrically adjustable door mirrors, Electric front windows + one touch + anti-pinch, Electronic brake force distribution, Electronic engine immobiliser, Exterior temperature gauge, Follow me home headlights, Front and rear cupholders, Front curtain airbags, Front headrests, Front interior light, Front intermittent wipers, Front passenger airbag deactivation, Front passenger grab handle, Front seat backrest storage nets, Fuel cut off safety device, Green tinted heat insulating glass, Heated rear window, Hill start assist, Internal chrome door handles, Isofix rear child seat preparation, Locking wheel bolts, Luggage compartment lighting, Metallic paint, Outer passenger rear

Miles:	150000
Fuel Type:	Petrol
Transmission:	Manual
Colour:	Grey
Engine Size:	1598
CO2 Emission:	129
Tax Band:	D (£160 p/a)
Body Style:	Estate
Reg:	BRZ1731

Technical Specs

DIMENSIONS	
Length:	3937mm
Width:	1683mm
Height:	1426mm
Seats:	5
Luggage Capacity (Seats Up):	260L
Gross Weight:	1645KG
Max. Loading Weight:	500KG
PERFORMANCE & ECONOMY	
Fuel Consum. (Urban Cold):	40.4MPG
Fuel Consum. (Extra Urban):	60.1MPG
Fuel Consum. (Combined):	51.4MPG
Fuel Tank Capacity:	40L
Number Of Gears:	6 SPEED
Top Speed:	125MPH
Acceleration 0-100 km/h:	9.8s
Engine Power BHP:	120.7BHP

headrests, Pyrotechnically pre-tensioned front seatbelts, Radio BOOST + single slot CD, Rake/reach adjustable steering wheel, Rear grab handles, Rear storage trays, Rear wiper, Remote alarm system, RF remote control central locking, Run flat indicator, Second remote key, Service interval indicator, Side air inlets, Speed sensitive power steering, Storage compartments in doors, Toolkit in luggage compartment, Traction control, White indicator lights