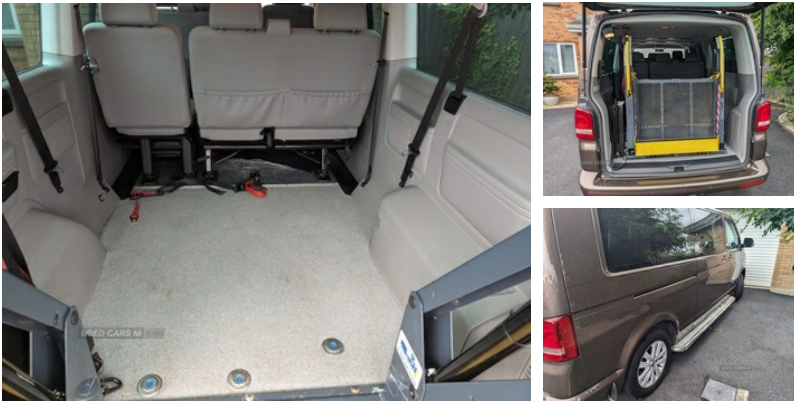


## Volkswagen Transporter 2.0 TDI 140PS SE Minibus | Jan 2013

# £12,450 O.N.O



This is a wheelchair transporter van with electric lift it's a six seater plus wheelchair space we also have the seats that were removed for wheelchair space brand new if wanting to refit 4400 miles diesel needs to be seen to be a appreciated have had from new great condition

### Vehicle Features

2 additional rear lamps, 2 speed variable intermittent/delay front wipers + wash, 2 Storage compartments in dash panel beneath outer air vents, 2 sun visors folding and pivoted with vanity mirrors, 2 x 12V power outlets, 2nd row three seat bench, 3 point inertia reel belt on all seats, 4 spoke leather steering wheel, ABS + EBD, Air recirculation system, Alarm with interior and tow away protection, Anti dazzle rear view mirror, Body coloured bumpers, Brake pad wear indicator, Child locks, Chrome trim on radiator grille, Comfort seats, Dimmable instrument illumination, Drinks holder, Driver and passenger airbag, Driver and passenger grab handles on A pillars, Drivers seat with height, Drivers seat with lumbar and armrests, Electric front windows, Electric heated mirrors and electric windows, Electronic transponder immobiliser, Engine braking control (MSR), ESP, Freewheeling door locks, Front passenger airbag deactivation, Front seatback storage pockets, Headlight range control, Heater + fresh air system with dust + pollen filter, Heater - rear, Heat reflective glass, Height adjustable head restraints, Interior light with delay, ISOFIX child seat mountings, Lights on warning buzzer, Locking glovebox, Open storage compartment in dash panel including mobile phone holder, Outer front seats with height adjustable seatbelts + pretensioners, Reach and rake adjustable steering column, reach and rake adjustment, Rear ashtray, Rear door interior release lever, Rear entry steps, Remote alarm and immobiliser, Remote

<b>Miles:</b>	44000
<b>Fuel Type:</b>	Diesel
<b>Transmission:</b>	MANUAL
<b>Colour:</b>	Brown
<b>Engine Size:</b>	1968
<b>CO2 Emission:</b>	198
<b>Tax Band:</b>	Light goods vehicle (£335 p/a)
<b>Body Style:</b>	MPV
<b>Reg:</b>	MFZ2142

### Technical Specs

DIMENSIONS	
<b>Length:</b>	5292mm
<b>Width:</b>	1904mm
<b>Height:</b>	1970mm
<b>Seats:</b>	7
<b>Luggage Capacity (Seats Up):</b>	
Not AvailableL	
<b>Gross Weight:</b>	3000KG
PERFORMANCE & ECONOMY	
<b>Fuel Consum. (Urban Cold):</b>	29.4MPG
<b>Fuel Consum. (Extra Urban):</b>	44.8MPG
<b>Fuel Consum. (Combined):</b>	37.7MPG
<b>Fuel Tank Capacity:</b>	80L
<b>Number Of Gears:</b>	6 SPEED
<b>Top Speed:</b>	107MPH
<b>Acceleration 0-100 km/h:</b>	14.2s
<b>Engine Power BHP:</b>	138.1BHP

central/dead locking + 2 keys, Rev counter, Side sliding door - left and right, Sliding glass in side sliding doors, Storage box integrated in roof headliner, Storage compartments in outer side of driver & passenger seats, Storage net on lower dash passenger side, Temp spare wheel, Traction control, Trip computer