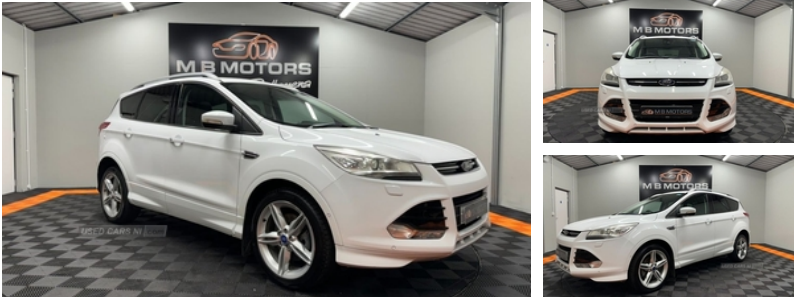




Ford Kuga TITANIUM X 2.0TDCI 5d 160 BHP | 2014

£9,495

****MOT JULY 2025****



Miles:	65000
Fuel Type:	DIESEL
Transmission:	Manual
Colour:	White
Engine Size:	1997
Body Style:	Sport utility vehicle
Reg:	EF14WHG

This car comes with... - Full Vehicle Health Check - RAC Warranty Option Available inc UK & ROI - Fully Serviced - HPI Report - Valeted - Fuel - Ready to Drive away.... **Delivery Available anywhere in the UK & Ireland**

Vehicle Features

'Ford Power' starter button, 'Quickclear' heated windscreen/heated washer jets, 2nd row air vents, 2nd row seat back tables, 3 point seatbelts on all 3 rear seats, 4 spoke leather steering wheel with silver accents, 8 speakers, 10 way electric power adjustable drivers seat, 60/40 split/folding rear back and cushion, Anti-lock Braking System/EBD, Auto dimming rear view mirror, Automatic headlights, Auxiliary power socket in luggage area, Auxiliary socket for external device, Bi-Xenon headlights and headlight washers, Body colour bumpers, Body colour rear spoiler, Centre console with stowage tray/bottle holder/CD stowage/front and rear 12V power point, Driver/front passenger manual lumbar adjust, Driver/passenger front seatback pockets, Driver/passenger seats fore/aft adjustment, Driver and passenger airbags, Driver and passenger side airbags, Dual electronic automatic temperature control, Electrically heated door mirrors, Electric front and rear windows + one touch + global open/closing, Electric traction assist system, EPAS, ESP+EBA, Folding rear centre armrest with storage compartment + cupholders, Footwell courtesy lights front and rear, Ford SYNC Bluetooth connection with voice control and USB port, Front/rear reading lights, Front and rear curtain airbags, Front floor mats, Front fog lights, Front head restraints, Front overhead courtesy

lights with theatre style dimming and delay, Heated front seats, Hill start assist, Immobiliser, Intelligent Protection System (IPS), Isofix system on outer rear seats, Leather gearknob, LED daytime running lights, Locking wheel nuts, Manual height adjustable front seats, Mini steel spare wheel, Panoramic opening glass sunroof, Power tailgate, Rain sensor windscreen wipers, Reach + rake adjustable steering column, Rear head restraints, Remote audio controls on steering wheel, Remote central locking, Scuff plates, Sports style front seats, Stowage unit in upper instrument panel, Tailgate wash/wipe, Thatcham Cat 1 volume sensing perimeter alarm, Tie down hooks, Tonneau cover, Trip computer, Tyre pressure monitoring system, Variable intensity instrument illumination