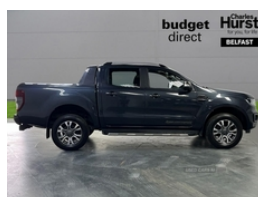


## Ford Ranger Pick Up Double Cab Wildtrak 2.0 Ecoblue 213 Auto | Mar 2021

MOT' D UNTIL 24TH MARCH 2025



Automatic, 2.0 turbo Diesel

### Vehicle Features

2 key fob, 6 Speed Gearbox, ABS, Adjustable lumbar support, Air Conditioning, Air suspension, Alarm, Audio remote control, Body coloured plastic front bumper, Boulder grey exterior door handle, Boulder grey exterior door mirror, Boulder grey radiator grille, CD Player, Central Locking, Centre console coolbox, Chrome interior door handle, Collision mitigation braking system, Cruise Control, curtain airbag and driver knee airbag, Daytime running lights, Double angled driver's door mirror, Double locking power door lock with flip key, Driver and front passenger airbag, Driver seat back mounted map pocket, Dual control system - Electronic air temperature control (EATC), Dual power heated fold back door mirror with puddle lamp and signal, Dyno grey sports hoop with side rails, Ebony headliner, Electric power assisted steering, Electric Windows, Emergency brake assist, Engine start/stop system, ESP and roll over mitigation, Heated driver and passenger seat, Heated windshield and rear window, High mounted stop lamp with cargo area light, ICE feature pack 129 - Ranger, Immobiliser, Intelligent speed assistance, ISOFIX child safety seat attachment, Journey grain partial leather upholstery with Wildtrak logo, Leather gearknob, LED ambient interior lighting, LED Front fog lamp, Locking rear axle, Locking wheel nuts, Moulded in colour tailgate handle, On Board Computer, Painted front fender grille, Passive anti theft system, Passive keyless entry and start system, Power adjustable 8 way driver seat, Power converter, Power tailgate lock, Premium front and rear floor mats with Wildtrak logo, Privacy glass, Rain sensitive windshield wipers, Reach and rake adjustable steering column,

**£20,499** + VAT

<b>Miles:</b>	17000
<b>Fuel Type:</b>	Diesel
<b>Transmission:</b>	Automatic
<b>Colour:</b>	Grey
<b>Engine Size:</b>	1996
<b>Tax Band:</b>	Light goods vehicle (£335 p/a)
<b>Body Style:</b>	Pickup
<b>Reg:</b>	TGZ6214

### Technical Specs

#### DIMENSIONS

<b>Length:</b>	5362mm
<b>Width:</b>	2163mm
<b>Height:</b>	1815mm
<b>Seats:</b>	5
<b>Luggage Capacity (Seats Up):</b>	Not AvailableL
<b>Gross Weight:</b>	3270KG

#### PERFORMANCE & ECONOMY

<b>Fuel Consum. (Urban Cold):</b>	38.7MPG
<b>Fuel Consum. (Extra Urban):</b>	62.8MPG
<b>Fuel Consum. (Combined):</b>	26.4MPG
<b>Number Of Gears:</b>	10 SPEED
<b>Top Speed:</b>	112MPH
<b>Acceleration 0-100 km/h:</b>	9s
<b>Engine Power BHP:</b>	210.1BHP

Rear adjustable/removable headrests, Rear bumper chrome under-bar, Rear bumper step in boulder grey, Rear centre console + storage compartment, Rear mudflaps, Rear Parking Sensors, Rear seats fold flat, Rear wiper auto when in reverse + front wiper on, Roof rails, Roof storage for driver sunglasses, side airbag, Spare wheel lock, Sport leather stitched steering wheel, Tailgate - Easy-lift/lower mechanism, Thatcham category 1 alarm security system, Tie down rails and rope hooks, Trip computer, Tyre pressure sensors, Underbody protection, Under hood engine cover, Wildtrak door trim panel insert