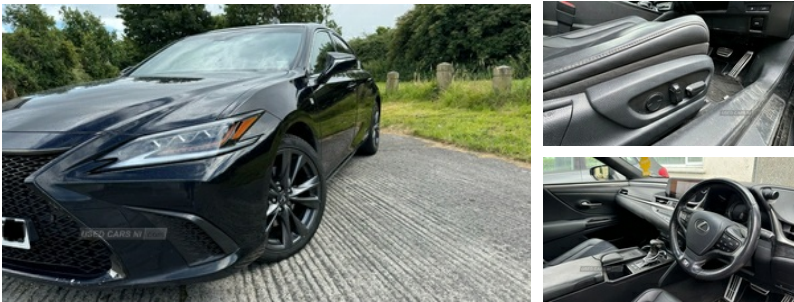


Lexus ES 300h 2.5 F-Sport 4dr CVT | Sep 2019
LUXURY HYBRID: 218 HP, E- CVT, F SPORT, TECH- LOADED,
44 MPG.

£17,000 O.N.O



Hybrid: 2.5L 4-cylinder engine + electric motor Total Output: 218 hp Transmission: E-CVT with Drive Mode Select (ECO, Normal, Sport, Sport+) Exterior: Sleek black color (rear bumper needs paint) Aggressive front grille, F Sport badging, aerodynamic enhancements 19-inch F Sport alloy wheels with new Pirelli all-season tires (£700) Interior: Premium leather-trimmed F Sport seats with heating/ventilation Dual-zone automatic climate control Infotainment: 12.3-inch touchscreen, navigation, Apple CarPlay, Android Auto, Amazon Alexa Safety Features: Lexus Safety System+ 2.0: Pre-Collision System, Lane Departure Alert, Intelligent High Beams, Dynamic Radar Cruise Control Parking Assist with Auto Braking Additional Info: Fuel Economy: 44 mpg combined Service History: Mostly complete Ideal for those seeking luxury, performance, and advanced safety features.

Vehicle Features

2 cup holders in the centre console, 2 LED headlights with cornering lights, 2 x fixed shopping bag hooks in boot, 2 x Isofix child rear seat restraints, 2 zone climate control with nanoe, 4 x tie down hooks in the boot, 5 Driving modes EV/Normal/Eco/Sport/Sport+, 8" TFT information screen with sliding speedometer, 10 airbags - front, 10 speaker pioneer audio with single CD, 12V socket in front and rear, 19" Alloy wheels, Acoustic front windscreen, Active noise cancellation, Active Traction Control (TRC), Adaptive cruise control, Adjustable seat belt anchor points, Alarm, Alloy instrument panel and door inserts, Analogue clock with LED illumination, Anti-lock braking system (ABS), Auto dimming interior rear view mirror, Auto glide control Lexus first - AGC, Auto headlight levelling, Auto headlights, Automatic high beam - AHB, aux, Card holder installed in drivers sun visor, DAB, Double door lock with speed sensitive operation, Drive mode select controller, Driver's seat with memory easy access, Driver and front passenger 2 stage

Miles:	100000
Fuel Type:	Hybrid
Transmission:	Automatic/Other
Colour:	Black
Engine Size:	2494
CO2 Emission:	106
Body Style:	Saloon
Reg:	fx69yzs

Technical Specs

DIMENSIONS

Length:	4975mm
Width:	1865mm
Height:	1445mm
Seats:	5
Luggage Capacity (Seats Up):	454L
Gross Weight:	2150KG
Max. Loading Weight:	470KG

PERFORMANCE & ECONOMY

Fuel Consum. (Urban Cold):	55.4MPG
Fuel Consum. (Extra Urban):	61.4MPG
Fuel Consum. (Combined):	61.4MPG
Fuel Tank Capacity:	50L
Number Of Gears:	1 SPEED
Top Speed:	112MPH
Acceleration 0-100 km/h:	8.9s
Engine Power BHP:	214.6BHP

airbag, E-call, Easy access system with seat slide + tilt + telescopic, Electronic parking brake, ELR (Emergency locking retractor), EPS with speed sensitive steering, Fixed rear seat with trunk through, Follow me home headlights, front and rear curtain airbag, Front and rear door pockets, Front and rear one-touch automatic power windows equipped with a jam protection, Front and rear outer seat belt pre-tensioners, Front centre armrest with storage, Front grille, Front passenger's airbag cut off device, Front strut brace and rear vibration reducing lateral dampers, Front windscreen de-icer, F SPORT - Adaptive variable suspension - AVS, F SPORT alloy front scuff plates, F SPORT exterior styling, F SPORT foot rest and pedal, HAC (Hill start assist control) with brake hold, Handori aluminium inlay, Headlight cleaners, Heated, Heated front screen, humidity sensor and rear console vents, Immobiliser, Intelligent parking sensors, knee, Lane departure alert - LDA, Lane tracking assist - LTA, LED ambient lighting, LED daytime running lights, LED front fog lights, LED rear lights, Lexus navigation with 8" multi-information screen, Locking wheel nuts, Luggage storage tray under deck board to right side, Map pockets on front seats, Multimedia system with remote touch pad, Outside rear view mirror auto retractable and dimming, Paddle shift controls, Perforated leather shift knob, Pop up hood, power adjust driver and passengers seats with 2 way lumbar support, Pre-crash safety system - PCS, Privacy glass, Push button start, Rain sensing windscreen wipers, Rear armrest with 2 cup holders and storage, Rear outer passenger seat airbag, Rear spoiler, Reversing camera, Road sign assist - RSA, Self charging hybrid, sequential indicators and multi weather lights, side, Smart entry + Smart start, Sunroof, Sway warning system, Textile carpet mats, Three 3 point rear seatbelts, Through load facility, Tyre pressure monitoring system, Tyre repair kit, USB and shark fin antenna + Bluetooth system, VDIM, Vehicle Stability Control - VSC and drive mode controls on Instrument brinicle, VIN Window etching, Water repellent glass on front door windows, with memory and revers tilt function