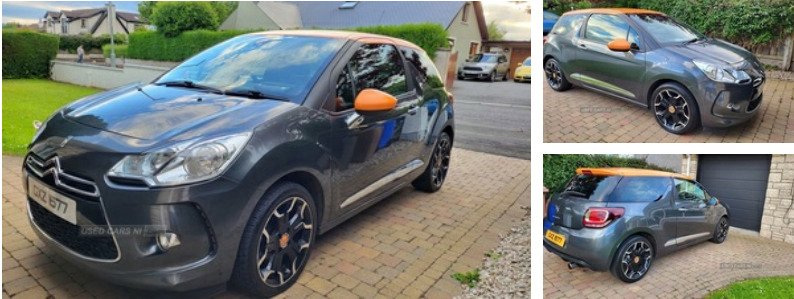


Citroen DS3 1.6 VTi 16V DStyle by Benefit 3dr | May 2014

£3,450

LOW MILEAGE, FULL MOT, NEW TYRES, PADS, DISCS



Stunning wee car
Only 80k miles from new
FULL years MOT today
Easy run and very economical
Two keys
Plenty of service history
Two brand new tyres today before MOT receipt here
New pads and discs on rear
Great wee example of DS3
First genuine buyer will buy
Car ready to drive away today

Vehicle Features

1/3 to 2/3 split folding rear seats, 3 rear 3 point seatbelts, 6 speakers, 12V socket, 17" Bellone black alloy wheels, ABS + EBD + EBA, Akinen cloth/alcantara upholstery, Aluminium pedals, Auxiliary input socket, Black interior trim, Black velour floor mats with orange piping, Body coloured bumpers, Chrome door-sill entry guards, Chrome door handles, Chrome pack - DS3, Chrome rubbing strips, City signature - DS3, Cruise control + speed limiter, Curtain airbags, Dark tinted rear glass, Dashboard centre speaker, Deadlocks, Driver's seat height adjustment, Driver/Front Passenger airbags, Electric adjustable door mirrors, Electric front windows + drivers one touch/anti-trap, ESP, Front and rear headrests, Front fog lights, Front lateral airbags, Front passenger's airbag cut off device, Front seatbelt pretensioners with force limiters, Height/reach adjust steering wheel, Hi-Fi + bluetooth with USB box, Immobiliser, Interior mood lighting, Isofix rear child seat preparation, Leather steering wheel with chrome inserts, LED daytime running lights, Metallic paint, Multi function trip computer, Orange door mirrors, Orange roof, Pollen filter, RDS stereo radio/MP3/CD player with steering mounted

Miles:	80000
Fuel Type:	Petrol
Transmission:	Manual
Colour:	Grey
Engine Size:	1598
CO2 Emission:	132
Tax Band:	E (£190 p/a)
Body Style:	Hatchback
Insurance group:	19E
Reg:	Gxz1577

Technical Specs

DIMENSIONS	
Length:	3948mm
Width:	1715mm
Height:	1458mm
Seats:	5
Luggage Capacity (Seats Up):	285L
Gross Weight:	1554KG
Max. Loading Weight:	479KG

PERFORMANCE & ECONOMY	
Fuel Consum. (Urban Cold):	35.8MPG
Fuel Consum. (Extra Urban):	58.9MPG
Fuel Consum. (Combined):	47.9MPG
Fuel Tank Capacity:	48L
Number Of Gears:	5 SPEED
Top Speed:	118MPH
Acceleration 0-100 km/h:	8.9s
Engine Power BHP:	118BHP

controls, Rear wiper, Reclining rear seats, Remote control central locking, Scented air freshener, Sculptured seats, Service interval indicator, Shiny black dashboard strip, Sports suspension, Subwoofer, Sunvisors with illuminated vanity mirrors, Traction control, Tyre repair kit, Variable power steering