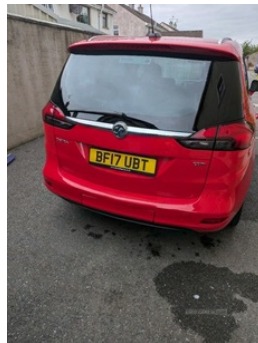


Vauxhall Zafira 2.0 CDTi SRi 5dr | Mar 2017 70000

£9,450



Great driving car well look after just serviced MOT February Sri bike rack build in to car worth £1500 .

Vehicle Features

2 individual fold flat 3rd row seats, 3 individual folding 2nd row seats, 3 point seatbelts on all seats, 3 spoke flat bottomed leather steering wheel, 3rd row storage with cup holders, 6 speakers, 12V power points in front + rear centre consoles, 35/30/35 split fold 2nd row seats, ABS, ABS and EBA, Air recirculation system, Ambient interior lighting, audio, Bluetooth mobile phone connection, Body colour door handles, Body colour door mirrors, Body coloured bumpers, Carpeted loadspace, CBC - (Cornering brake control), Centre console with storage/cupholders, Child locks on rear doors, Chrome grille surround, Chrome interior door handles, Cloth upholstery, Cruise control + speed limiter, DAB Digital radio, Dark tinted rear glass, date, Display panel showing time, Door to door illumination, Driver/Front Passenger airbags, Driver/passenger sunvisors and illuminated vanity mirrors, Drivers seat with tilt and lumbar adjustment, Electrically adjustable and heated door mirrors, Electric front windows/one touch facility, Electric rear windows, Electronic brake force distribution, Emergency brake assist, Engine immobiliser, ESP plus + traction control, Fade up/down

Miles:	70000
Fuel Type:	Diesel
Transmission:	Manual
Colour:	Red
Engine Size:	1956
CO2 Emission:	137
Tax Band:	E (£190 p/a)
Body Style:	MPV
Reg:	Bf17ubt

Technical Specs

DIMENSIONS	
Length:	4658mm
Width:	1884mm
Height:	Not Availablemm
Seats:	7
Luggage Capacity (Seats Up):	152L
Gross Weight:	2455KG
Max. Loading Weight:	770KG

PERFORMANCE & ECONOMY

Fuel Consum. (Urban Cold):	44.1MPG
Fuel Consum. (Extra Urban):	62.8MPG
Fuel Consum. (Combined):	54.3MPG
Fuel Tank Capacity:	58L
Number Of Gears:	6 SPEED
Top Speed:	129MPH
Engine Power BHP:	167.6BHP

courtesy light, Front centre armrest, Front door pockets, Front fog lights, Front headrests, Front map reading lights, Front passenger airbag deactivation, Front seat backrest storage nets, Front seatbelt force limiters, Front seat side impact airbags, Front sports seats, Full size curtain airbags, Glovebox with lid, Heated rear window with auto timer, Height adjustable driver's seat, Height adjustable front/rear head restraints, Height adjustable front seatbelts, Hill start assist, Illuminated load area and glovebox, Instrument panel light dimmer, Interior tailgate handle, Intermittent rear wash/wipe, Isofix system on outer rear seats, Key left in ignition audible warning, LED daytime running lights, Lights on warning, Load restraint lashing eyes, Locking wheel nuts, Low fuel warning light, Multi function trip computer, outside temp, Parking distance sensors front and rear, Pollen filter, Reach + rake adjustable steering column, Reading lights, Rear door pockets, Remote central deadlocking, Remote ultrasonic alarm system, Retractable load area cover, Rev counter, Seatbelt pretensioners, Security code/remote display protection for audio, Service interval indicator, Silver air vents, Speed sensitive power steering, Sport pedals, Steering wheel mounted audio controls, Storage box on driver's side lower fascia, Twin jet windscreen washer nozzles, Tyre pressure monitoring system, USB connection, Variable intermittent front wash/wipe, Vauxhall OnStar emergency assistance