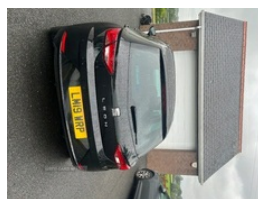


## Seat Leon 1.6 TDI SE Dynamic [EZ] 5dr | Mar 2019

# £8,350

**EXCELLENT CONDITION. INCLUDES SPARE WHEEL AND TWO KEYS.**



<b>Miles:</b>	97452
<b>Fuel Type:</b>	Diesel
<b>Transmission:</b>	Manual
<b>Colour:</b>	Black
<b>Engine Size:</b>	1598
<b>CO2 Emission:</b>	111
<b>Tax Band:</b>	Petrol/Diesel (£190 p/a)
<b>Body Style:</b>	Hatchback
<b>Insurance group:</b>	13E
<b>Reg:</b>	Lm19wrp

### Technical Specs

<b>DIMENSIONS</b>	
<b>Length:</b>	4282mm
<b>Width:</b>	1816mm
<b>Height:</b>	1459mm
<b>Seats:</b>	5
<b>Luggage Capacity (Seats Up):</b>	380L
<b>Gross Weight:</b>	1870KG
<b>Max. Loading Weight:</b>	634KG

<b>PERFORMANCE &amp; ECONOMY</b>	
<b>Fuel Consum. (Urban Cold):</b>	58.9MPG
<b>Fuel Consum. (Extra Urban):</b>	72.4MPG
<b>Fuel Consum. (Combined):</b>	67.3MPG
<b>Fuel Tank Capacity:</b>	50L
<b>Number Of Gears:</b>	5 SPEED
<b>Top Speed:</b>	122MPH
<b>Acceleration 0-100 km/h:</b>	9.8s
<b>Engine Power BHP:</b>	114BHP

### Vehicle Features

'Lights On' warning buzzer, 1 knee, 2 curtain, 2 folding remote keys with window open/close and boot opening function, 2 front side, 2 X SD card slot, 3 point rear seatbelts x3, 3D map display, 4 USB, 7 airbags - 2 front, 8 speakers, 8" touch screen, 12v power point in centre console, 17" Dynamic alloy wheels 30/3, 60/40 split folding rear seat with armrest, ABS + TCS, Active front headrests and 3 rear headrests, Additional heating and ventilation outlet in rear of centre console, Air conditioning,

Apple Car Play, Auxiliary input socket, Black radiator grille, Bluetooth audio streaming, Bluetooth Handsfree Phone Connection, Body colour door handles, Body coloured bumpers, Body coloured exterior mirrors with integrated LED indicators, Boot storage net, Cargo rings in boot, CD player, Central locking fuel filler cap, Child proof door locks, Chrome-plated radiator grille surround, Chrome interior detailing, Comfort suspension, DAB Digital radio, Dark tinted rear windows, Driver and passenger seat height adjust, Driver seat lumbar adjustment, Dust/pollen filter, Electrically adjustable door mirrors, Electric front/rear windows, Electric handbrake, Electro-mechanical power steering, Electronic parking brake with auto hold, Engine immobiliser, ESC with tyre pressure warning indicator, ESP+EBA, Front/rear floor mats, Front adjustable head restraints, Front and rear parking sensors, Front armrest with storage box, Front assist with pedestrian protection, Front comfort seats in Tresil cloth, Front cupholders x 2, Front fog lights with cornering function, Front seatback storage pockets, Front seatbelt pretensioners, Front seatbelt reminder, Full Link Smartphone Integration with Mirror Link, Gear shift indicator, Google Android Auto, Halogen headlights with small LED daytime running lights, Heated door mirrors, Height/reach adjust steering wheel, Hidden exhaust pipe, High centre console with integrated box & cup holder, High gloss black finish B and C pillars, High resolution colour driver display, Hill hold control, Instrument lighting with brightness control, Leather steering wheel and gear knob, Locking wheel bolts, Low fuel warning light, Luggage tie-down hooks, Media system plus (incl. media system colour), Multi-Collision braking, Navigation system (incl. media system plus), Outside temperature gauge, Passenger airbag deactivation system, rear air outlet, Rear top tether child seat ISOFIX attachment, Rear wash/wipe, Remote central locking + deadlocks, RPM counter, SEAT logo boot release, SEAT USB media cable, Service interval indicator, Steering wheel mounted audio/phone controls, Storage box under drivers seat, Trip computer, Voice recognition, Volumetric alarm with back up horn, with armrest in front seats, XDS electronic differential lock