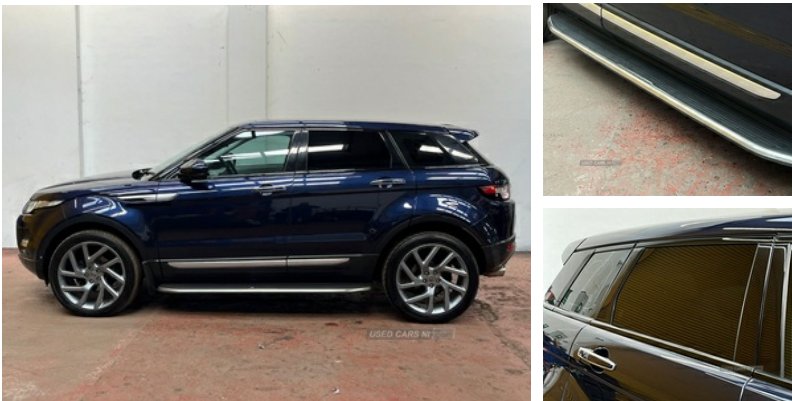


88 Rashee road, Ballyclare, BT39 9HT  
07940396916

## Land Rover Range Rover Evoque 2.2 SD4 Prestige 5dr Auto [9] [Lux Pack] | May 2014

**£10,950** O.N.O



Beautiful well looked after jeep,highest spec for this model,sought after colour with white exterior.full pan roof,every extra available is on it .

### Vehicle Features

3 rear 3 point seatbelts, 3 seat rear bench, 6 way electric adjustable passenger seat + lumbar support, 8 way electric driver seat with lumbar support + memory, 12V power point front, 12V power point in luggage area, 17 speaker + subwoofer, 60/40 split folding rear seat, 825W, ABS, Air quality sensor, Alarm, Analogue + Digital TV reception, Audio Connectivity System, audio server and CD storage, Audio system - CD/radio, Auto climate control with air filtration, Automatic headlamp activation, Auxiliary Audio Jack, Auxiliary heater, Bluetooth telephone connectivity, Body coloured bumpers, Centre console storage with lid, Cruise control, DAB Digital radio, Dark atlas tailgate finish, Diesel particulate filter, Driver/passenger sunvisors and illuminated vanity mirrors, Driver and passenger airbags, Drivers knee airbag, Drive select with paddle shift and sport mode, Dual view touch screen, Dynamic route guidance, Electric/heated/folding door mirrors with memory + auto dipping and puddle lights, Electronic parking brake, EPAS, Footwell illumination, Front centre armrest, Front fog lights, Front head restraints, Front Parking Aid, Front seatbelt pretensioners with force limiters, Front side airbags with curtain airbags, HDD Premium navigation, Heated rear windscreen, Heated windscreen, Heated windscreen washers, Height/reach adjustable steering column, Height adjustable front seatbelts, Hill descent control, Hill start assist, Illuminated glovebox, Immobiliser, Interior mood lighting, Isofix child seat preparation, Keyless entry, Lashing points, Leather steering wheel, Locking

<b>Miles:</b>	91000
<b>Fuel Type:</b>	Diesel
<b>Transmission:</b>	Automatic/Other
<b>Colour:</b>	Blue
<b>Engine Size:</b>	2179
<b>CO2 Emission:</b>	159
<b>Tax Band:</b>	G (£255 p/a)
<b>Body Style:</b>	Sport utility vehicle
<b>Reg:</b>	Sh14nfe

### Technical Specs

DIMENSIONS	
<b>Length:</b>	4365mm
<b>Width:</b>	1900mm
<b>Height:</b>	1635mm
<b>Seats:</b>	5
<b>Luggage Capacity (Seats Up):</b>	575L
<b>Gross Weight:</b>	2350KG
<b>Max. Loading Weight:</b>	665KG
PERFORMANCE & ECONOMY	
<b>Fuel Consum. (Urban Cold):</b>	39.2MPG
<b>Fuel Consum. (Extra Urban):</b>	53.3MPG
<b>Fuel Consum. (Combined):</b>	47.1MPG
<b>Fuel Tank Capacity:</b>	60L
<b>Number Of Gears:</b>	9 SPEED
<b>Top Speed:</b>	121MPH
<b>Engine Power BHP:</b>	187.7BHP

wheel nuts, Luggage compartment lighting, Luggage cover, Oxford leather upholstery, Panoramic glass sunroof/electric blind, Parallel parking assist, Power boot opening and closing, Power front/rear windows with global close, Premium carpet mats, Proximity sensing and touch detection for overhead map lights, Push button starter, Rain sensor windscreen wipers, Rear centre armrest with 2 cupholders, Rear centre head restraint, Rear headrests, Rear parking aid, Rear spoiler, Rear wiper, Remote central locking, Reverse traffic detection with blind spot monitor and closing vehicle sensor, Roll stability control, Seatbelt warning, Service interval indicator, Steering wheel mounted audio/cruise controls, Surround camera system with towing assist, Terrain Response, Traction control, Trailer stability assist, Trip computer, USB connection, Voice control system